



InnovaTint

Ultimate

Training Manual

From:

Chromaflo Technologies
Vernissakatu 1
FIN-01300 VANTAA,
FINLAND

P.O. Box 42
FIN-01301 VANTAA,
FINLAND

System Support:
Tel. +358 207 188 000
Fax. + 358 207 188 020

Table of Contents

GENERAL	4
1 WORKING WITH INNOVATINT ULTIMATE	5
1.1 STARTING INNOVATINT.....	5
1.2 CLOSING THE INNOVATINT PROGRAM.....	6
1.3 SOFTWARE ACTIVATION / DEACTIVATION.....	7
1.3.1 <i>Software license activation with an on-line connection</i>	7
1.3.2 <i>Software license activation without an on-line connection</i>	8
1.3.3 <i>Software license deactivation with an on-line connection</i>	10
1.3.4 <i>Software license deactivation without an on-line connection</i>	11
1.4 THE USER INTERFACE.....	13
1.5 ORDER STATUS.....	14
2 CREATE A NEW ORDER AND TINT A COLOR	15
2.1 COLOR SEARCH.....	21
2.2 SELECT A COLOR FROM THE COLOR CARD.....	22
2.3 FIND THE CLOSEST COLOR CARD COLOR TO MATCH THE MEASURED COLOR.....	24
2.4 MATCH A MEASURED COLOR.....	26
2.5 FIND A HARMONIC COLOR FOR A COLOR CARD COLOR.....	28
2.6 FIND THE HARMONIC COLOR TO A MEASURED COLOR.....	29
2.7 PRODUCT SEARCH.....	30
2.8 CAN SIZE SEARCH.....	32
2.9 SAVE NEW CUSTOMER INFORMATION INTO THE ORDER.....	33
2.10 ADD EXISTING CUSTOMER INFORMATION INTO AN ORDER.....	35
2.11 EDIT AN ORDER.....	36
2.12 DELETE AN ORDER.....	37
3 TINT THE SAME ORDER AGAIN	38
3.1 TINT THE SAME ORDER AGAIN FROM THE HISTORY TAB PAGE.....	39
3.2 USE A TINTED ORDER AS A TEMPLATE.....	43
3.3 USE A TINTED ORDER AS A TEMPLATE FROM THE HISTORY TAB PAGE.....	44
4 CREATE AND EDIT A COLOR FORMULA	47
4.1 CREATE A NEW COLOR FORMULA.....	47
4.2 EDIT AN EXISTING COLOR FORMULA.....	49
4.3 RE-SCALE AN EXISTING COLOR FORMULA.....	51
5 BAR CODE DRIVEN TINTING	52
6 THE COLORANT LEVELS	54
6.1 COLORANT LEVEL INDICATOR ON THE MAIN PAGE.....	54
6.2 COLORANT LEVEL INDICATORS AND WARNING LEVELS.....	55
6.3 EDIT A COLORANT LEVEL MANUALLY.....	56
6.4 REFILL A COLORANT CANISTER AND UPDATE A COLORANT LEVEL.....	57
6.5 REFILL ALL COLORANT CANISTERS WITH THE SAME AMOUNT.....	58
6.6 REFILL A COLORANT CANISTERS BY USING THE BAR CODE READER.....	60
7 PROGRAM OPTIONS	62
7.1 PROGRAM LANGUAGE.....	64
7.2 FORMULA DISPLAY UNIT.....	64
7.3 SCREEN RESOLUTION.....	65
7.4 DEFAULT CAN SIZE.....	66
7.5 FORMULA VERSIONS.....	67
7.6 PROGRAM SETTINGS.....	68
7.7 REPLICATION.....	69
7.8 STATISTICS.....	70
7.9 LABEL PRINTER.....	72
7.10 SPECTROPHOTOMETER INSTALLATION.....	74
7.11 SPECTROPHOTOMETER CALIBRATION.....	76
7.12 FORMULA EXPORT TO A NON-COROB TINTING MACHINE.....	78
7.13 PRICES FOR COLORANTS, PRODUCTS, AND CANS.....	79
7.14 UPDATE STOCK LEVELS FOR THE BASE PAINTS.....	85
7.15 SHOW PRICES FOR THE WHOLE ORDER IN THE EXTRA INFO PANEL.....	86
7.16 EXCLUDE TAX FROM THE PRICES DISPLAYED ON THE EXTRA INFO PANEL.....	86
7.17 VISIBLE ITEMS IN THE EXTRA INFO PANEL.....	87
7.18 PRICE INFORMATION ON THE LABELS.....	89
7.19 RESET AND INITIALIZE THE DISPENSER.....	90

7.20	ENABLE CAN CHANGE CHECK.....	91
7.21	ENABLE DISPENSE WITH WEIGHT CHECK.....	91
7.22	SCALE CONFIGURATION.....	92
7.23	PURGE THE TINTING MACHINE NOZZLES.....	93
8	PRODUCT INFO.....	94
9	DISPENSING HISTORY.....	95
9.1	DISPENSING HISTORY BY ORDERS.....	96
9.2	DISPENSING HISTORY BY CUSTOMERS.....	97

General

© COPYRIGHT 2010, Chromaflo Technologies. - All rights reserved in all countries. No part of this material may be translated into any other languages and/or adapted and/or reproduced in any form, or by any means, electronic or mechanical, including but not limited to photocopying and recording, without prior written permission of Chromaflo Technologies.

Information in this manual is subject to change without notice and does not represent a commitment on the part of Chromaflo. Any reference to companies, names, dates and addresses used in the screens and/or examples is purely accidental, unless otherwise stated, and is intended solely to clarify use of the Chromaflo Technologies products.

Chromaflo shall not be liable for technical or editorial errors or omissions made herein; nor for incidental or consequential damages resulting from the performance or use of this material.

The names of the products used might be trademarks or registered trademarks of their respective companies.

(Reference software version 1.3.1 beta 3)

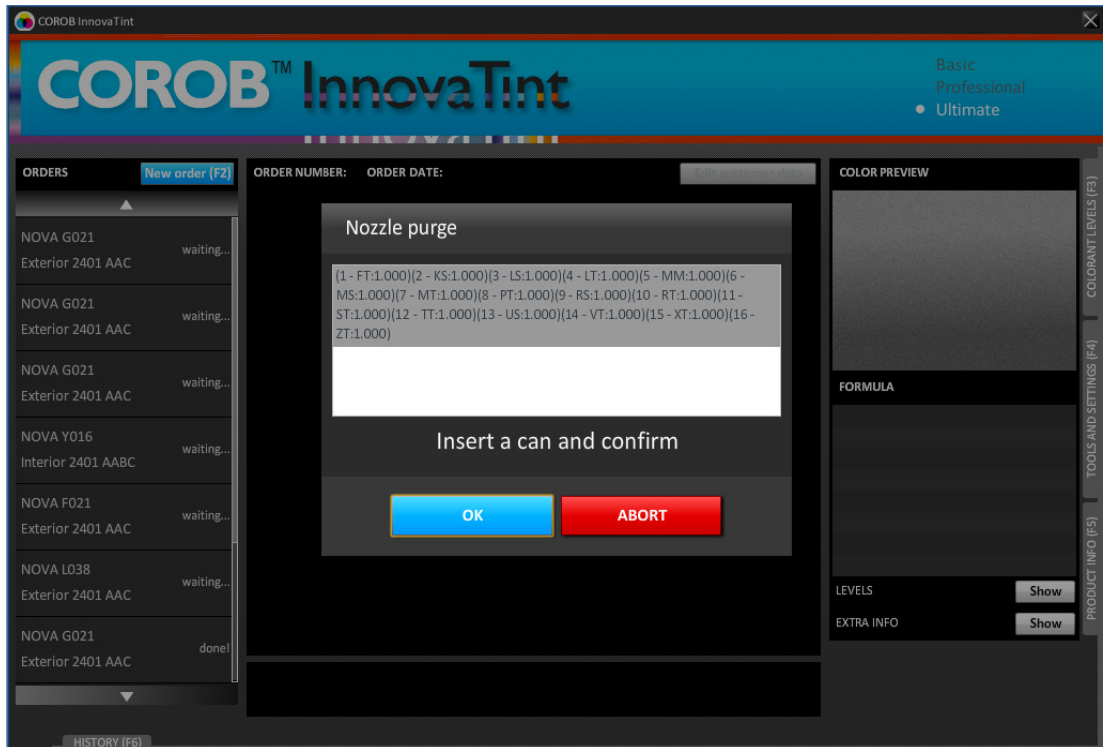
v.2012.10.11

1 Working with InnovaTint Ultimate

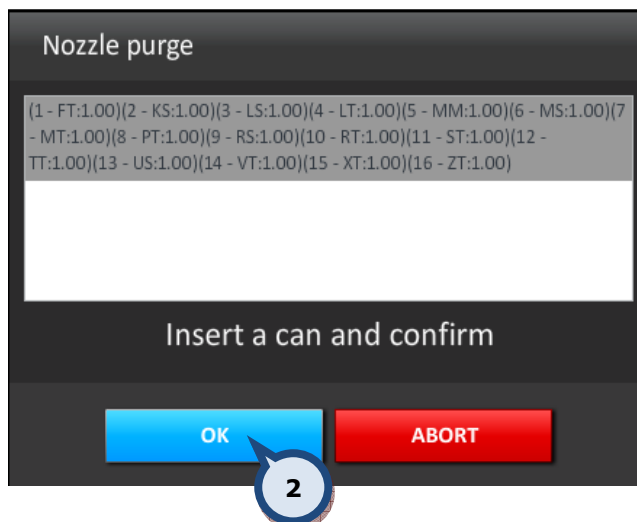
1.1 Starting InnovaTint

The InnovaTint Ultimate software program can be opened either by using the desktop shortcut, or via the start menu. The path via the start menu is shown here below.

Start menu ⇒ Programs ⇒ Corob Windows Software ⇒ InnovaTint 1.3.1



The nozzle purge operation window will automatically appear when starting up the InnovaTint program



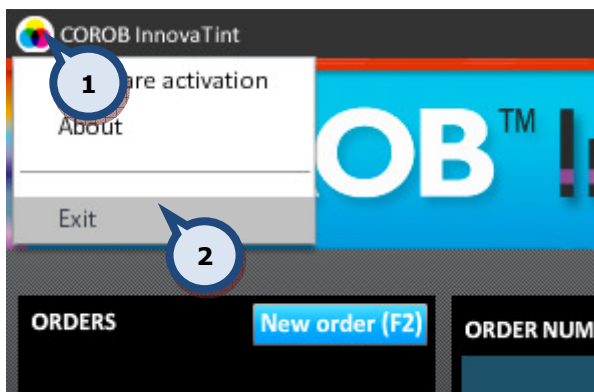
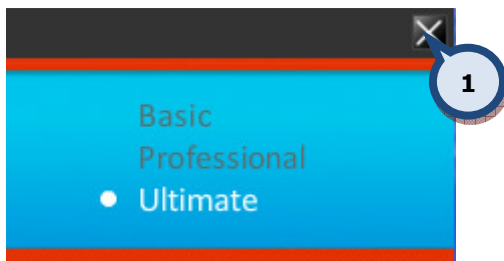
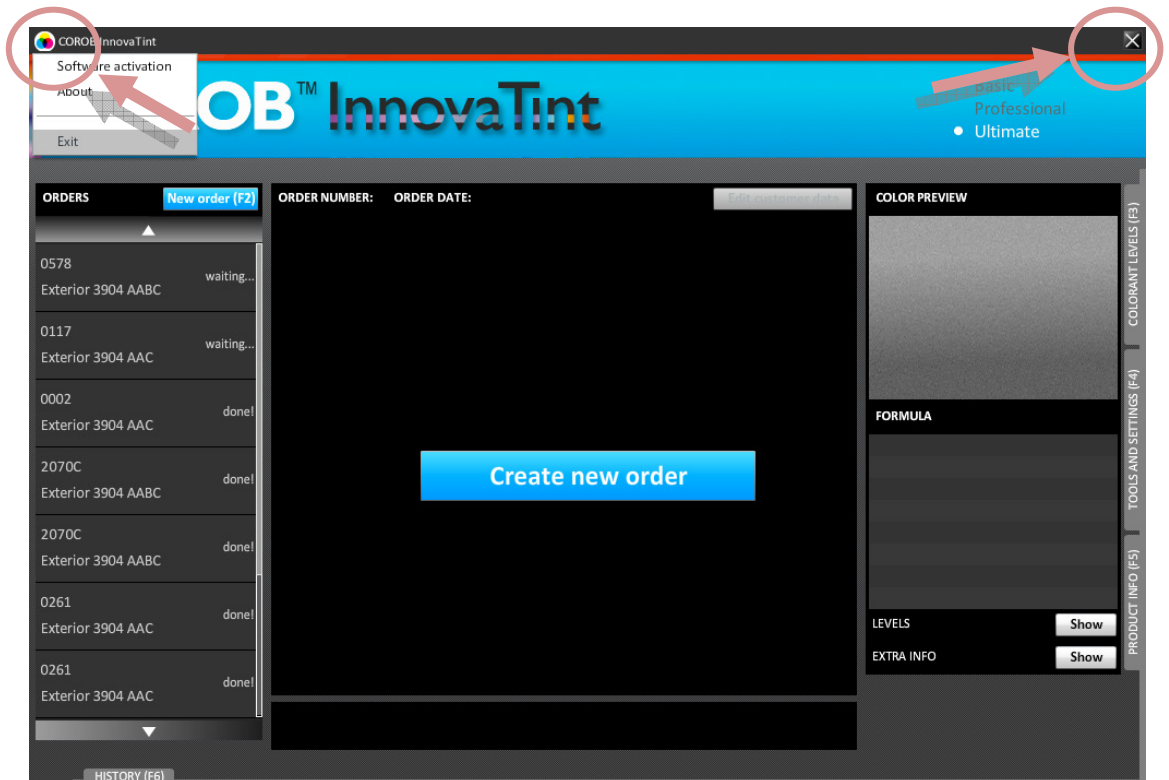
To **purge** the tinting machine:

- 1.**Place an empty paint can onto the shelf of the tinting machine.
- 2.**Click on the **OK** button to begin the purge.

Note: See further information about the purge operation in **section 4.6**.

1.2 Closing the InnovaTint program


The InnovaTint program can be closed in one of two ways:



Option 1:

1. Click on the  symbol on the upper right hand corner of the page.

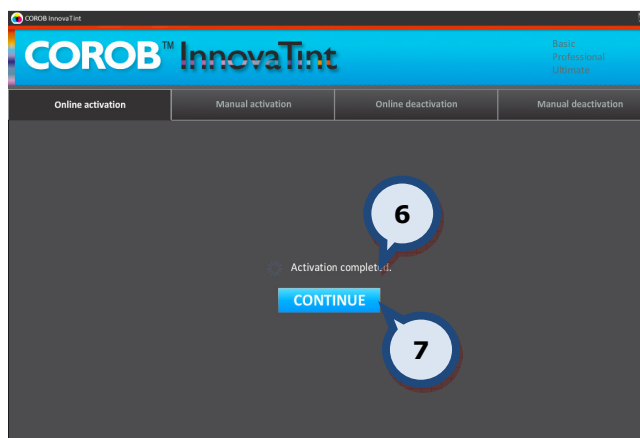
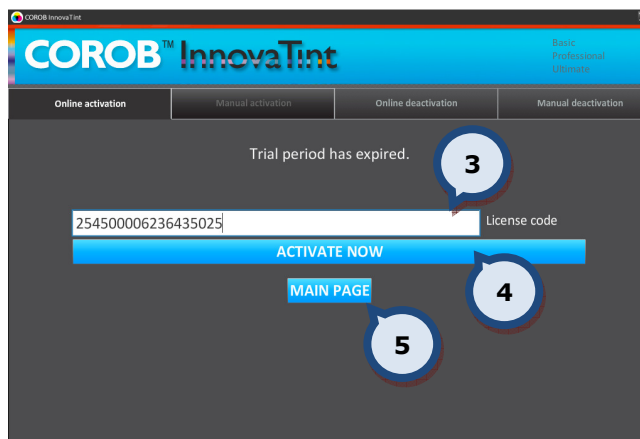
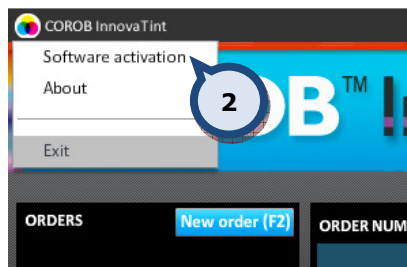
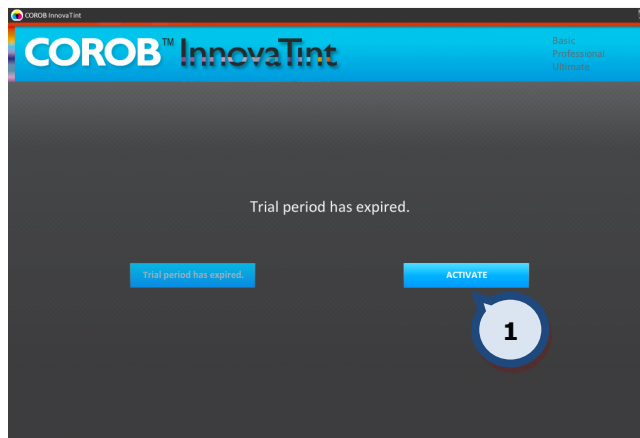
Option 2:

1. Click on the  symbol on the upper left hand corner of the page.
2. Click on the **Exit** text.

1.3 Software activation / deactivation

1.3.1 Software license activation with an on-line connection

When the trial period has expired, the following page is displayed when starting the program.



1. Click on the **ACTIVATE** button to proceed to the software activation page.

2. Alternatively, during the trial period you can navigate to the software activation page via the upper left hand side menu.

3. Once directed to the activation page, type or paste into the text field the license code obtained during the purchase of this software.

4. Then click on the **ACTIVATE NOW** button to activate the license.

Note! Click on the **MAIN PAGE** button (5) if you wish to return to the previous page without activating the license.

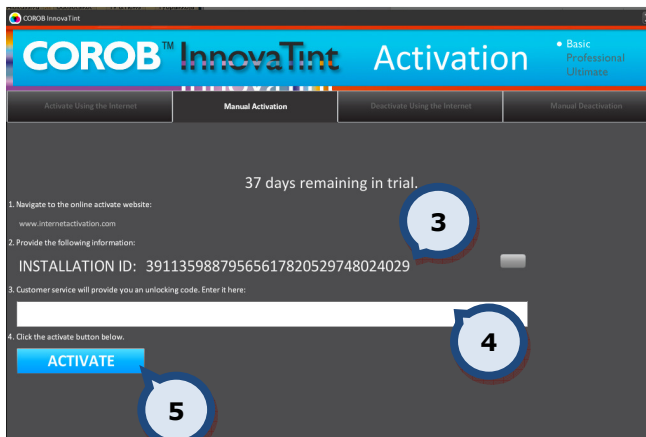
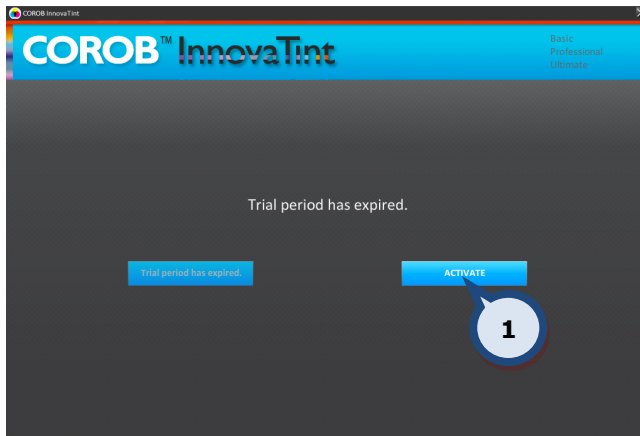
6. You will then be notified if the activation process was successful. If the code is not correct, the appropriate error message is displayed.

7. Then click on the **CONTINUE** button which will return you to the program's main page.

You will also find further instructions about this function in the separate **InnovaTint Activation manual**.

1.3.2 Software license activation without an on-line connection

When the trial period has expired, the following page will be displayed.



1. Click on the **ACTIVATE** button to proceed to the software activation page.

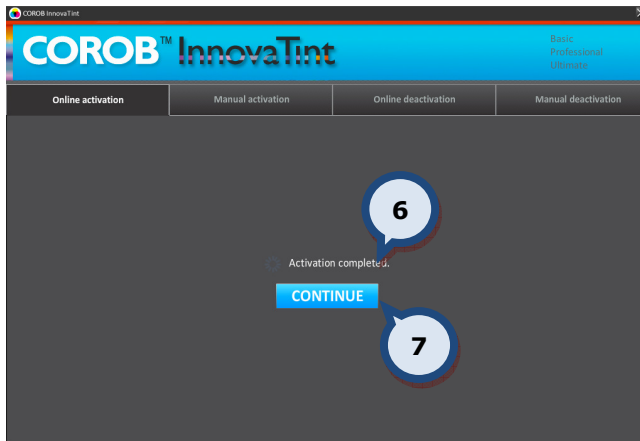
2. Alternatively, during the trial period you can navigate to the software activation page via the upper left hand side menu.

3. To activate the program, you will first need to navigate into the Nalpeiron activation portal (www.internetactivation.com) and input the INSTALLATION ID and the license code in to the web site to generate the Unlocking code.

Alternatively, you can send the INSTALLATION ID number (3) with the license code to the person who has sold to you the InnovaTint software to obtain the Unlocking code.

4. Once you have received your Unlocking code you can input it into the text field.

5. Then click on the **ACTIVATE** button to activate the license.



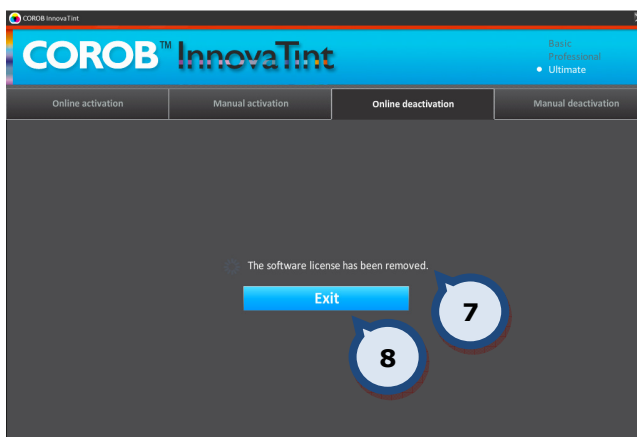
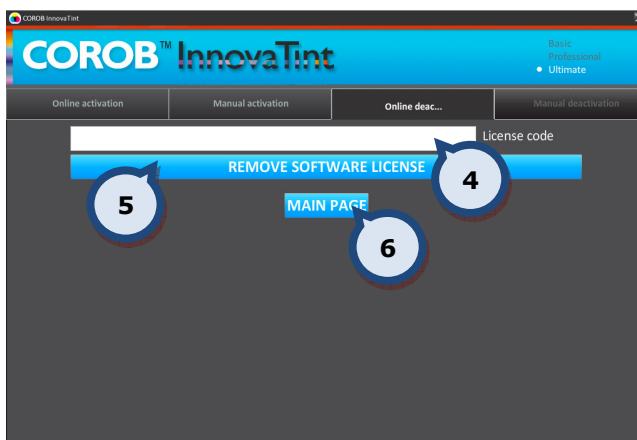
6. You will then be notified if the activation process was successful. If the code is not correct, the “Invalid license code” error message is displayed.

7. Then click on the **CONTINUE** button which will return you to the program’s main page.

You will also find further instructions about this function in the separate **InnovaTint Activation manual**.

1.3.3 Software license deactivation with an on-line connection

The software license can be removed from use at any time via the Software activation section.



1. First, navigate to the software activation page via the upper left hand side of the menu.

You will then see the message on the page stating that 'The software is active'.

2. Click on the **BACK** button if you wish to return to the main software page without de-activating the software.

3. Alternatively click on the **REMOVE LICENSE** button to proceed to the removal page.

4. Once directed to the removal page insert into the text field the license code you obtained during the purchase of the software.

5. Click on the **REMOVE SOFTWARE LICENSE** button to proceed with deactivation.

6. Click on the **MAIN PAGE** button if you wish to return to the previous page without deactivating the license.

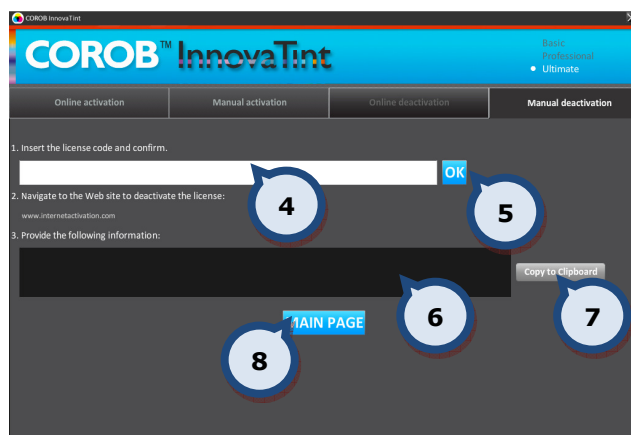
7. The deactivation process is complete if the text on the page reads as follows: 'The software license has been removed.' If the code is not correct, the "Invalid license code" error message is displayed.

8. Then click on the **EXIT** button to come out of the program.

See further instructions about this function in the separate **InnovaTint Activation manual**.

1.3.4 Software license deactivation without an on-line connection

The software license can be removed from use at anytime via the Software activation section.



1. First, navigate to the software activation page via the upper left hand side of the menu.

You will then see the message on the page stating that 'The software is active'.

2. Click on the **BACK** button if you wish to return to the main software page without de-activating the licence.

3. Alternatively click on the **REMOVE LICENSE** button to proceed to the removal page.

4. Insert into the text field the license code obtained during the purchase of the software.

5. Then click on the **OK** button to generate the deactivation code.

6. In this field the deactivation code will become visible. You have now deactivated the software but need to confirm the deactivation of the license. There are two options on how to proceed.

Option 1:

Take a note of this code and enter it into the web page (www.internetactivation.com) via a web connected computer. Follow the on page instructions to confirm the deactivation with Chromaflo.

Option 2:

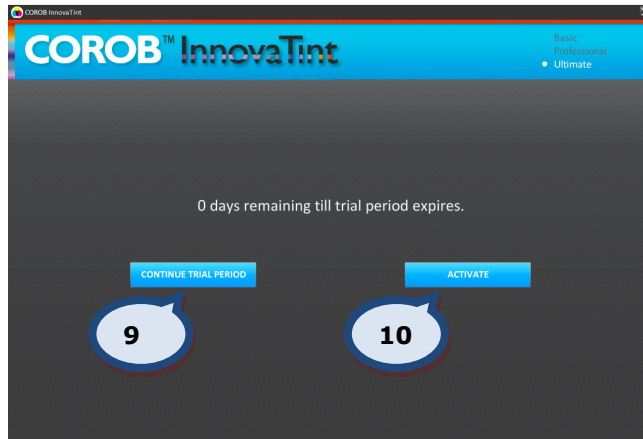
7. Click on this button if you wish to copy the deactivation code onto the computer's clipboard.

From here create a text file on the computer and paste the code from the clipboard. Save the text file onto a storage method. Copy the text file onto a web connected computer and paste the deactivation code into the web page (www.internetactivation.com). Follow the on page instructions to confirm the deactivation with

Chromaflo.

Note! As deactivation has now been completed, exit the software using the 'X' button in the top right hand corner.

8. Alternatively, click on the **MAIN PAGE** button to be directed to the following page.



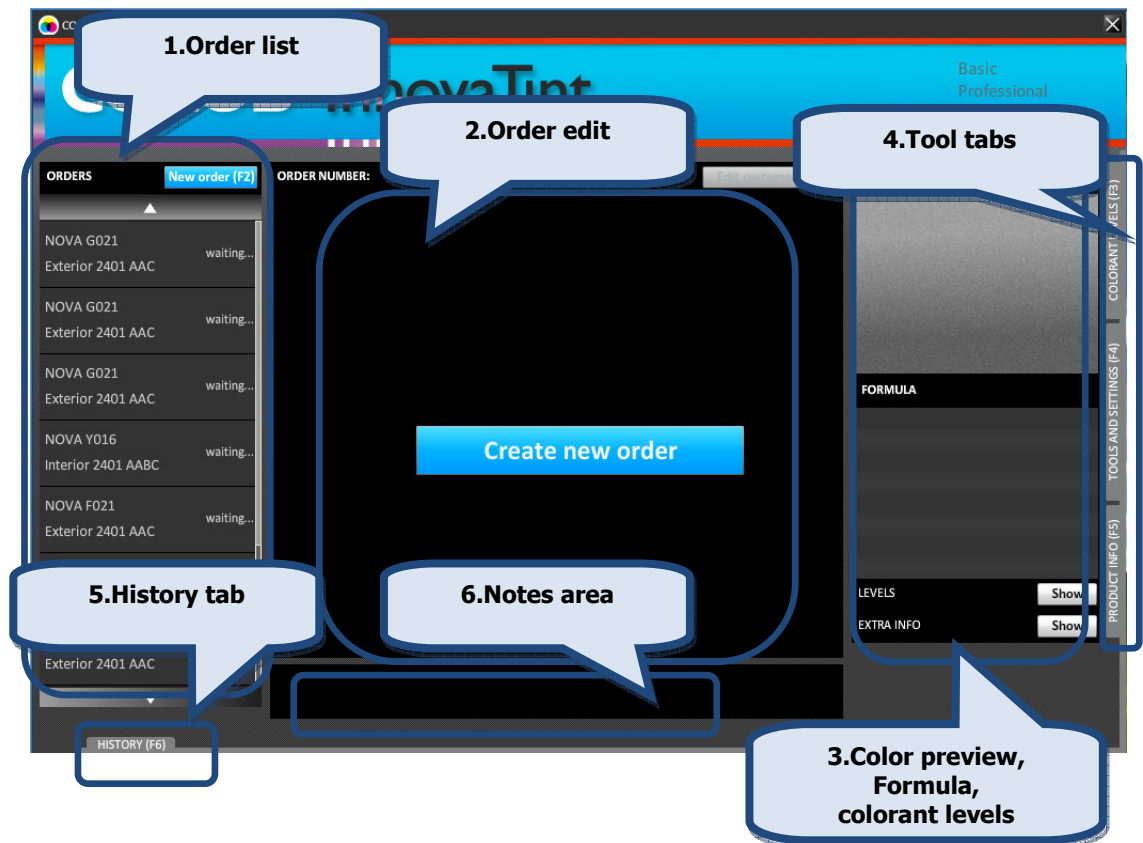
9. If you have clicked on the **MAIN PAGE** button, you will then be asked to either click on the **CONTINUE TRIAL PERIOD** should your trial period be still active.

10. Alternatively proceed through the activation process by clicking on the **ACTIVATE** button.

See further instructions about this function in the separate **InnovaTint Activation manual**.

1.4 The user interface

The user interface can be subdivided into the following areas of which below you will find a short summary for each:



1. Order List: This area shows the list of currently managed orders. It displays the orders by color name, product name, processing time and status.

2. Order edit: This is where you can create and edit orders. Here you can select for an order the color formula, the product and the can size. The order status can also be changed here. See further details about creating new orders in **section 2**.

3. Color preview: This is used to view various order details such as a preview of the color; the colorants used in the selected formula and the colorant levels in the canisters of the dispensing machine. It can also provide details such as the price, tax, margin, total volume, etc.

4. Tool tabs: Using the tabs on the right hand side of the page, the maintenance tools can be accessed. There are 3 tab pages available:

4.1. Colorant levels: On this page you can view and update the colorant levels of the canisters within your dispensing machine. See further details in **section 6**.

4.2. Tools and settings: On this page you can adjust the settings for the label printer, spectrophotometer, and dispensing machines. See further details in **section 7**.

4.3. Product info: On this page you can set the type and the amount of product info to be displayed on the POS software. See further details in **section 8**.

5. The History tab: Using this tab at the bottom of the application window you can access customer details and orders. See further details in **section 9**.

6. The Notes area: In this area, symbols for alternative color formula and primer suggestion are displayed. Also, this area provides information regarding the formula for the chosen color, for example if the formula is low hiding (comment =LH). The comment can then be explained to the customer in advance.

1.5 Order status

All created orders will have a status depending on what stage of the dispensing process they are at. The created orders will be visible within the dispensing queue on the left hand side. Below are mentioned the different status types:

unconfirmed!	This states that not all mandatory information of the current order has been filled and saved. The order will remain in the unconfirmed! status until the necessary actions have been taken.
waiting...	The order will have a waiting... status when all mandatory information has been filled in, and the order has been saved.
preparing...	The order will have a preparing... status when it has been sent to the dispenser. The dispenser is currently processing the order.
done!	The order will have a done! status when it has been processed by the dispenser.

2 Create a new order and tint a color



This section will explain how the basic features around order placement works.

The page below explains what you will see when creating a new order. It is also a page in which you can view orders that are currently in the dispensing queue and those that have already been dispensed.



Note: The formula unit within the FORMULA display area can be set from the **Options section in the Tools and settings** page. See further instructions on this function in **section 7.2**.

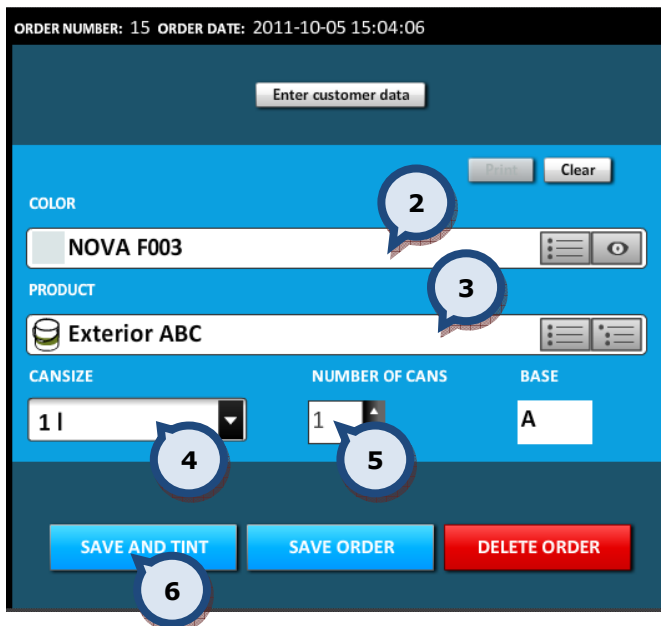
The items to be shown within the EXTRA INFO table can be set from the **Hide/Show items section in the Info settings tab page of the Tools and settings > Prices and Stock** page. See further instructions on this function in **section 7.15**.

The EXTRA INFO and LEVELS can be set to be visible or hidden by using the  or  buttons.



To create a new order:

1. To begin, click on either the **CREATE NEW ORDER** button, the **NEW ORDER** button or alternatively use the F2 button on your keyboard.



The following page will then appear.

2. Select the color from the corresponding drop down list on the right of the text field or type the color code/name. (See **section 2.1** for further options on color search.)

3. Then select the product from the corresponding drop down list or type the product code/name into the field. (See **section 2.6** for further options on product search.)

Note: It is possible to select the product before selecting the color. You can also change the order of the color and product selectors via the **Program settings section in the Tools and settings > Options** page. See further instructions on this function in **section 7.6**.

4. Once the product and color have been selected, choose the can size. (See **section 2.7** for further options about can size search.)

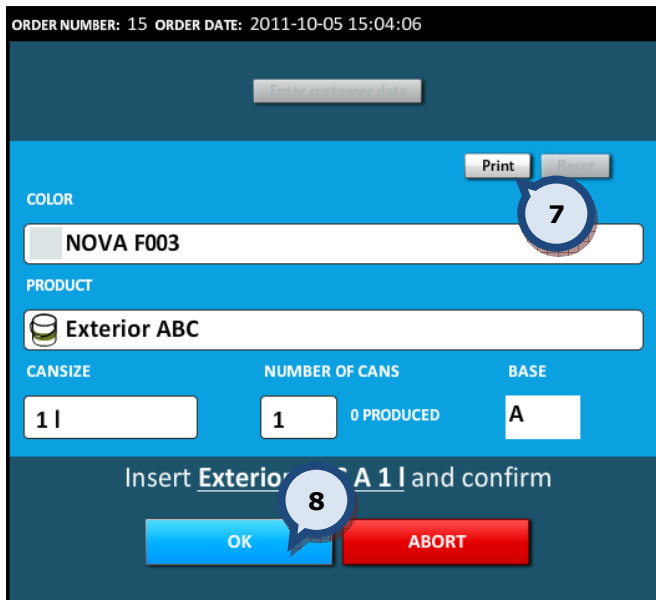
5. Then type in the number of cans required, or use the arrow buttons to increase or decrease the number.

6. Click on the **SAVE AND TINT** button (to save the order and to dispense the colorants).

Note: You can place an order without dispensing the colorants. To do this click on the **SAVE ORDER** button. However to save an order making it available for dispensing the color, product and can size fields must be filled. Possible choices are offered based on the current color/product selections, upon compatibility and upon availability of products stocks, colorants level etc.



Tip: If the clock symbol is visible in the notes area at this point, this means that there are alternative formulas available to choose for this color. See "formula version" in section 2 for further details regarding selecting alternative formula.



7. Click on the **Print** button to print a label for the order.

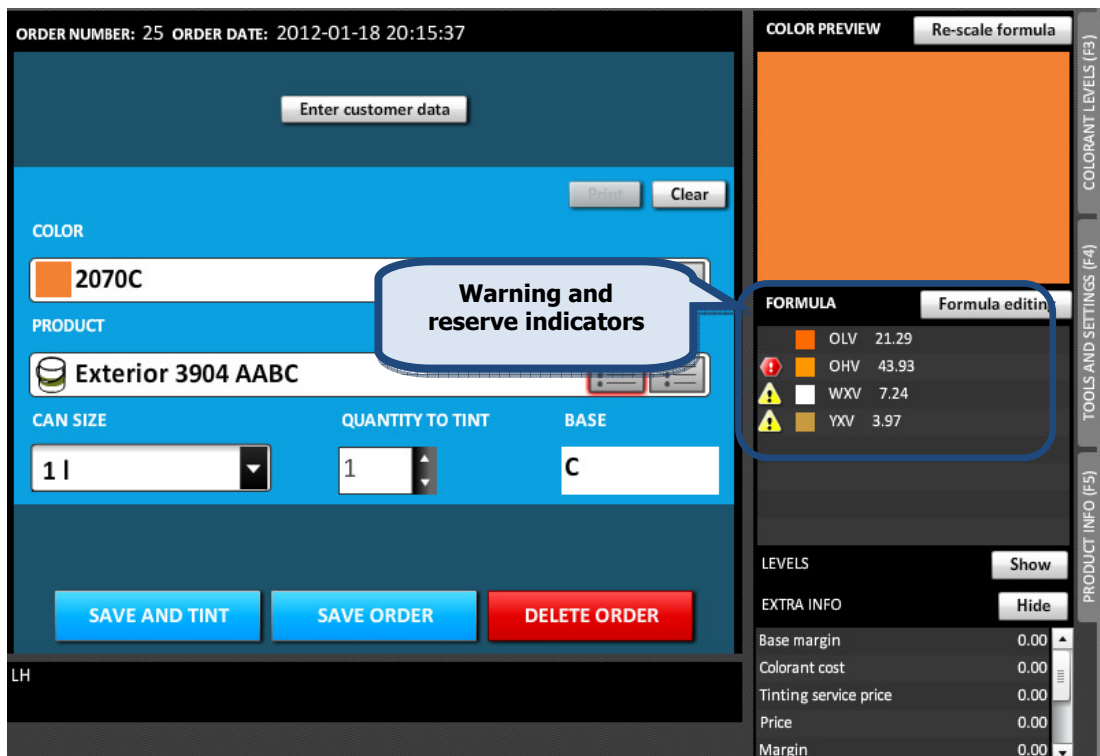
8. Then click on the **START DISPENSING** button to proceed with the tinting. You will first be asked to insert the can onto the shelf of the dispensing machine, then confirm by clicking on the **OK** button.

Tip! The whole order selection can also be filled using just keyboard functions.

Note: You can save an order as a customer formula by clicking on the **Enter customer data** button. See further details in **sections 2.8** and **2.9**.

Note: Every newly created order will be assigned a unique ID (for future reference) and a timestamp which will be shown at the top of the page. The order will also be visible with an 'unconfirmed!' status in the dispensing queue.

Note: After can size selection has been made, a colorant level check is done to evaluate the possibility to dispense the selected formula. If colorant levels in the tinting machine canisters are below the warning or reserve levels, then either the warning indicator or the reserve indicator is displayed in the formula section, next to the colorant in question.

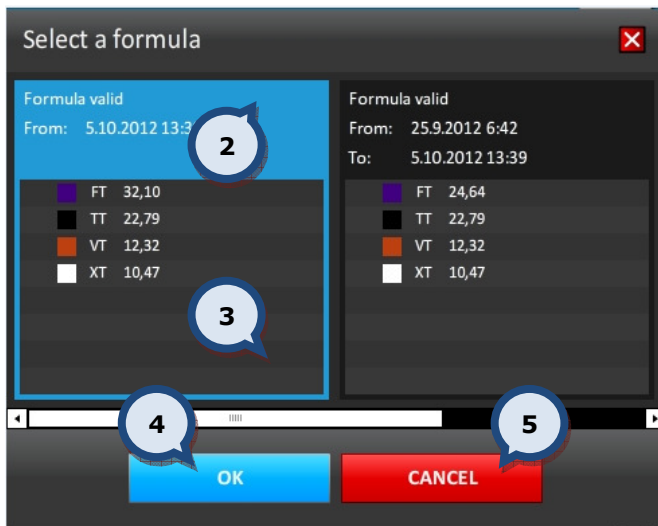
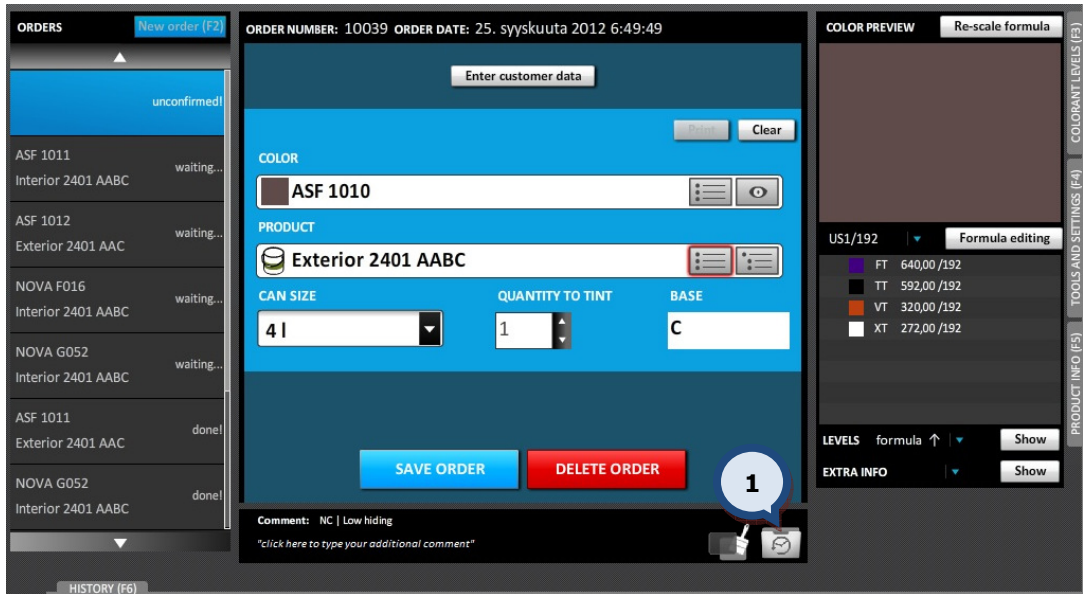


An attempt to dispense a formula in which a reserve indicator is visible will result in the warning message: ERROR – Colorant level too low!. Dispensing is not possible until the canisters have been refilled and the indicator disappears.



Formula versions

After selecting the can size, you may see the clock symbol in the notes area, if alternative versions of the selected color formula are available.



1. Click on the **Clock** symbol to see the alternative formulae.

2. Either click on the alternative formula to select it,

OR

3. Use the slider to scroll to the required formula if multiple versions are available. Click on the required formula to select it.

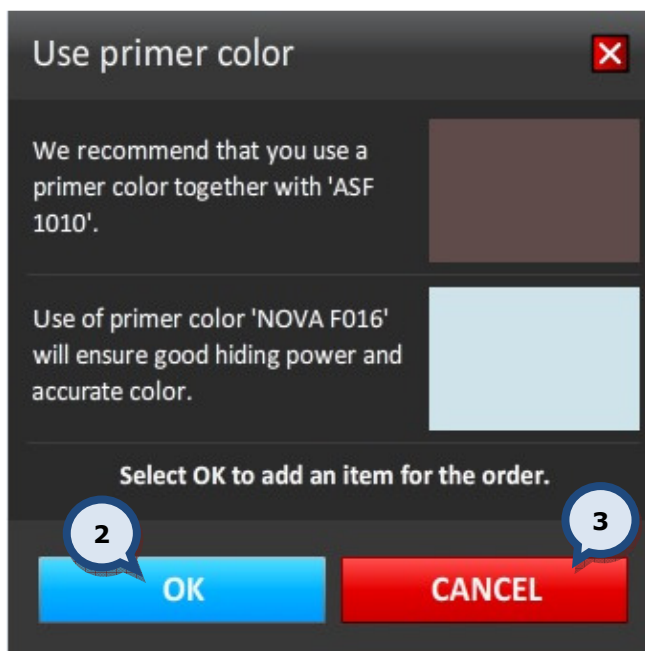
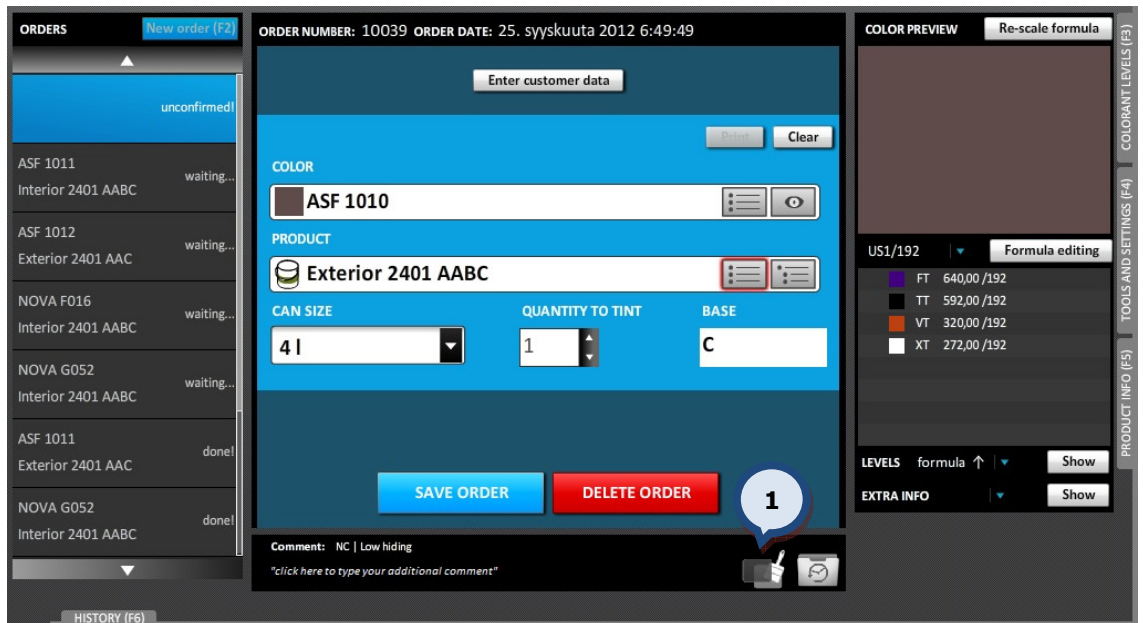
4. Click on the **OK** button to proceed.

OR

5. Click on the **CANCEL** button to use the default formula.

Primer selection

After selecting the can size, you may see the paint brush in the notes area, if a primer product is needed for the chosen color. The primer product is automatically calculated to optimize the hiding of the final color.



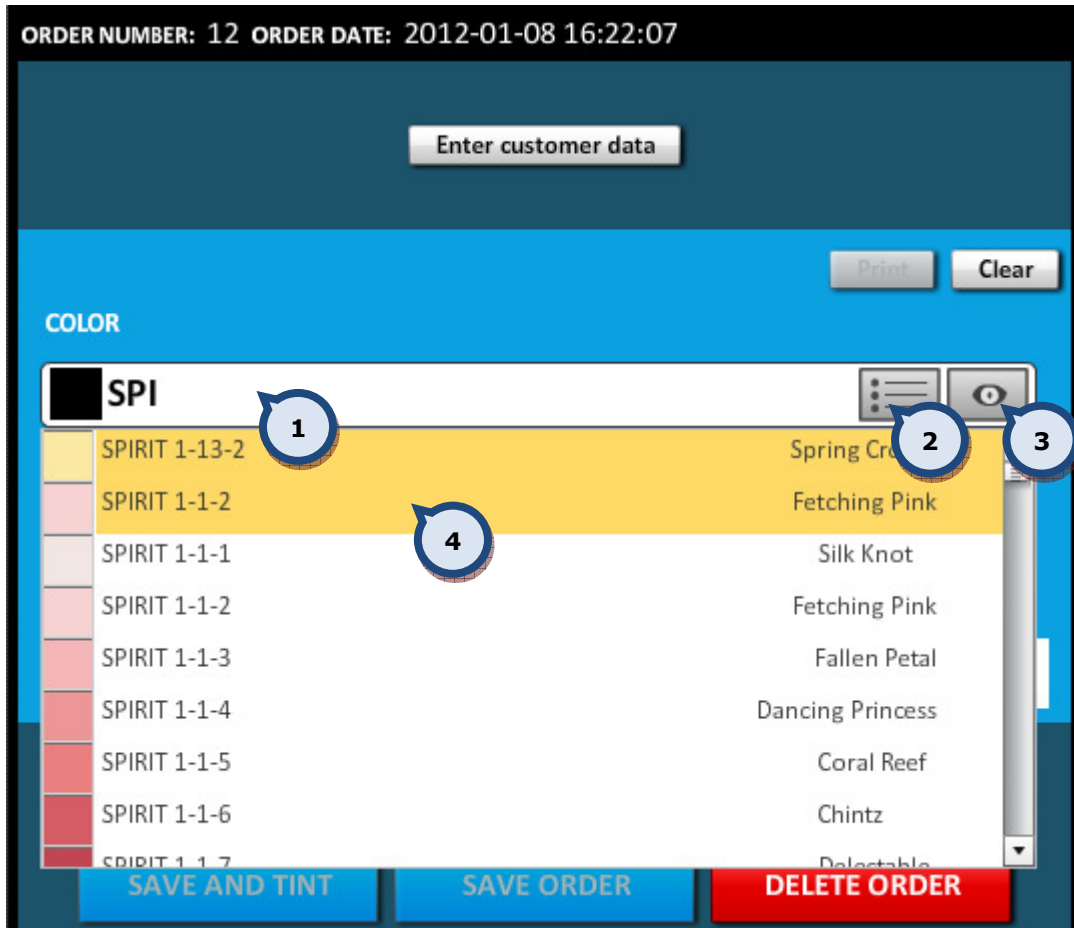
1. Click on the **Paint brush** symbol to see the suggested primer color.
 2. Click on the **OK** button to select a suggested primer color and to proceed.
- OR
3. Click on the **CANCEL** button to return to the previous window without selecting a primer color.

Note: The automatic primer suggestion is set up in the **Program settings section of the Tools and Settings > Options > MORE...** page. See further instructions in **section 7.6**.

Note: When the primer suggestion has been accepted and the top coat order has been created, the program will create a new order for the primer and it will be with a waiting... status in the dispensing queue. The can size is determined by the top coat can size.

2.1 Color search

There are three ways in which to search and choose the desired color from the database.



Option 1:

1. Full or part of the name or code can be typed into the COLOR field. A search as you type function will present the possible choices from a drop down list. The list shows the color code, name and a preview. Click on the desired color when it becomes visible.

Option 2:

2. Click on the list icon to reveal a drop down list containing all of the available color choices. Navigate to the desired color within the color card and click on it.

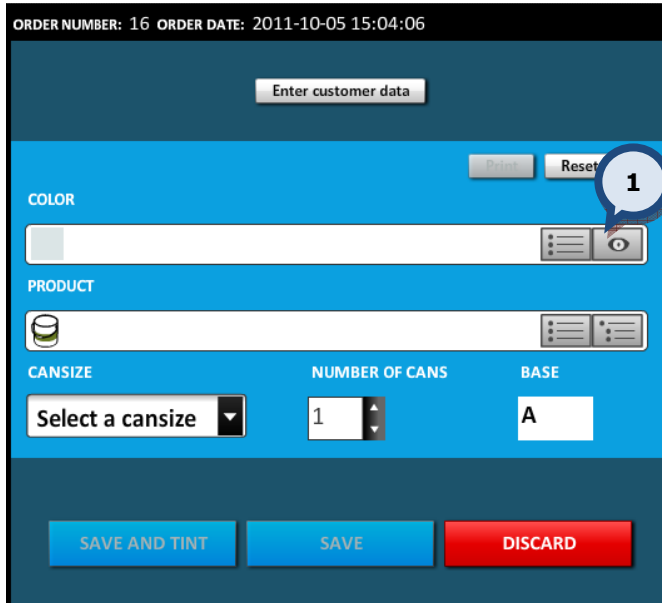
Option 3:

3. Click on the color eye button. See further details about this option on the next page.

Tip! The most popularly sold colors are highlighted in yellow (**4**), if the option is set as active from the **Program settings section of the Tools and settings > Options**. See further instructions about this function in **section 7.6**.

2.2 Select a color from the color card

The color can be searched and selected from the color card by using the Color eye button.

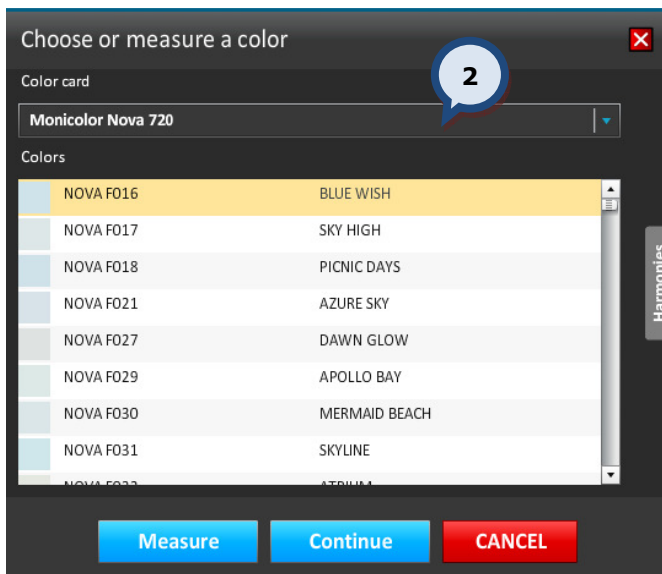


Select a color from a color card:

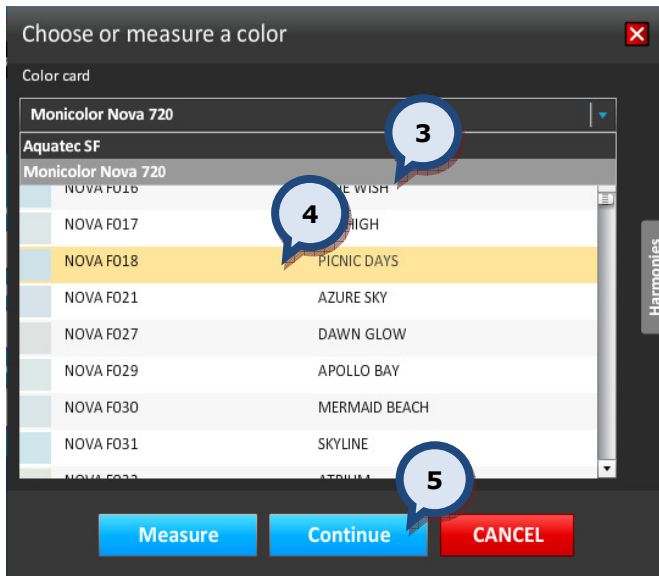
To narrow down your search result, you can first select a color card before searching for a specific color code.



1. Click on the color eye button.



2. Then click on the **Select a color card** selector field to open the drop down list.



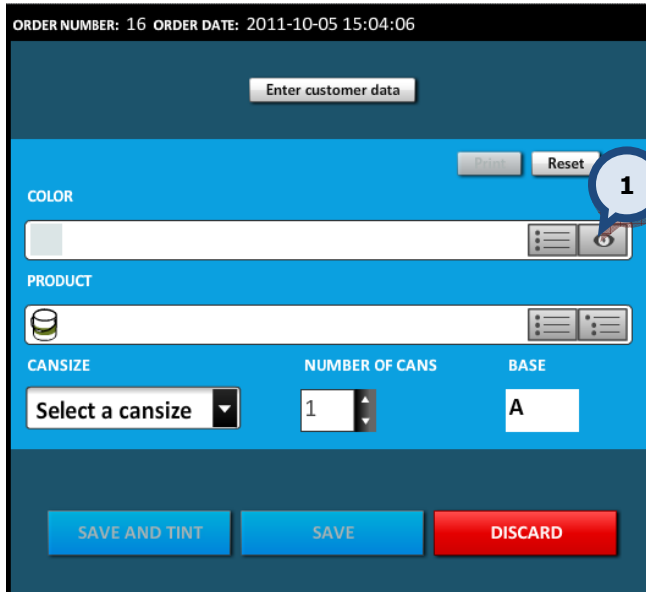
- 3. Select the desired **color card** from the drop down list.
- 4. Then select the **color code** from the list.
- 5. Click on the **Continue** button to select a product.



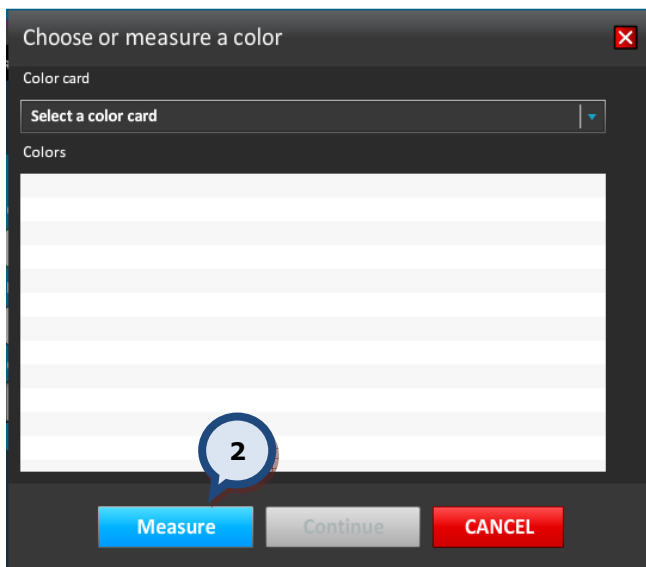
- 6. **PRODUCT:** Type in the product name, or use either the product list or the product tree button to search and select the product.
- 7. **Use:** Click on the **Use** button to return to the order entry page.

2.3 Find the closest color card color to match the measured color

To search for the closest color in the database against a measured color, use the color eye button.



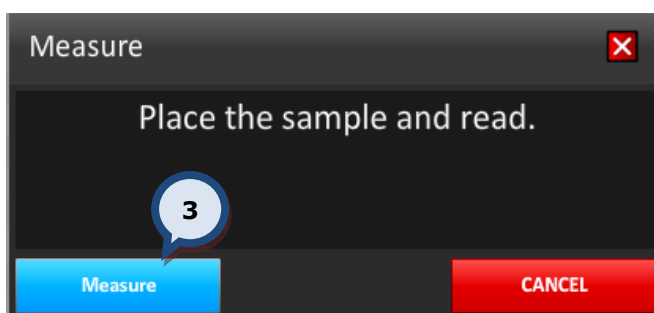
1. Click on the  color eye button.



2. Then click on the **MEASURE** button.

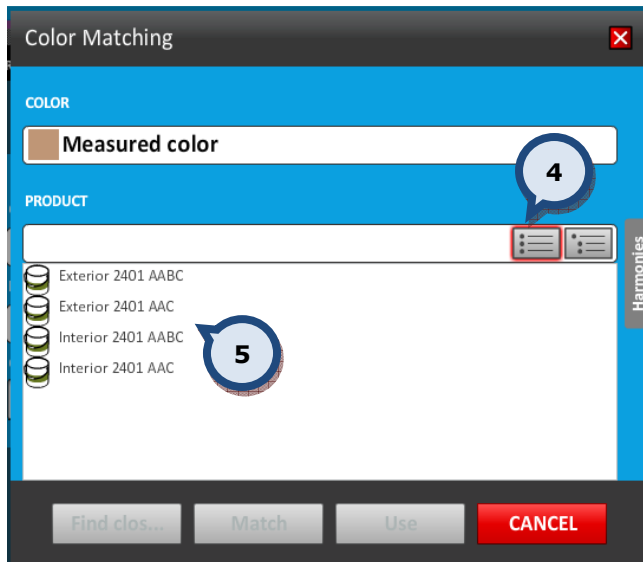
Note: The software will then check to ensure a spectrophotometer has been correctly installed. If not, then a spectrophotometer error: 'please check configuration' message will appear.

If the spectrophotometer has been installed and configured correctly, you will see the following page.



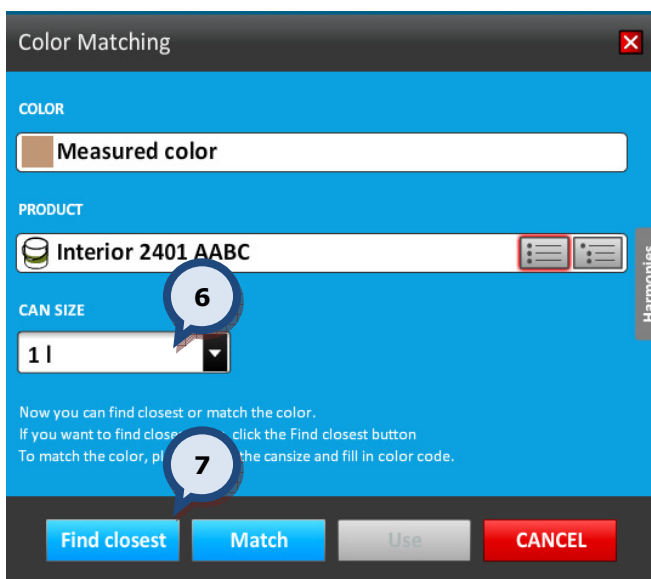
Note: if the spectrophotometer has not been calibrated, the software will prompt you at this stage to do so. See further instructions on how to calibrate a spectrophotometer in section 7.10.

3. Place the sample onto the measuring aperture of the spectrophotometer and then click on the **Measure** button.



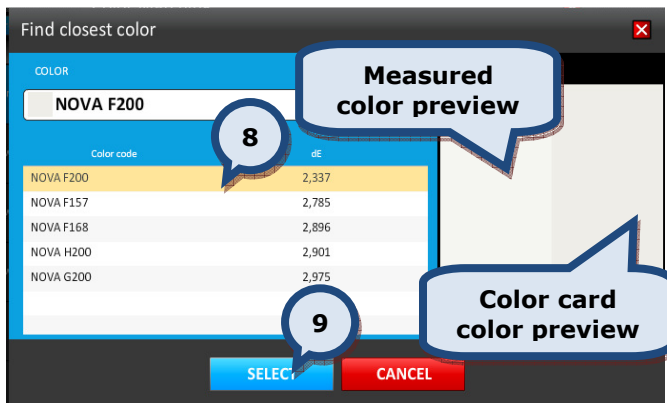
4. Click either on the **Product list**, or the **Product tree** button to select a product. Alternatively, type in the name or part of the name into the PRODUCT field.

5. Select the **Product** from the list.



6. Select a **can size** from the drop down list.

7. Click on the **Find closest** button.



Now the list of the closest matches to the measured color are listed in the table, and a preview of both of the colors are displayed on the right hand side of the page

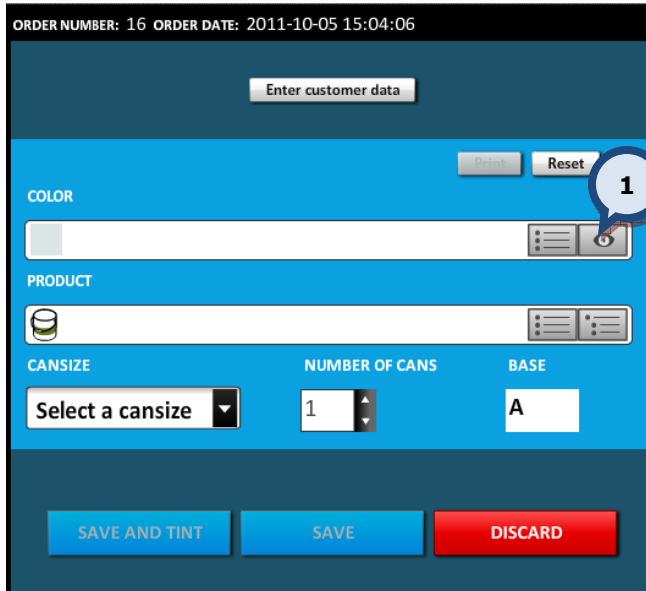
8. Select a **color code** from the list.

9. Click on the **SELECT** button to select a color and to return to the order entry page.

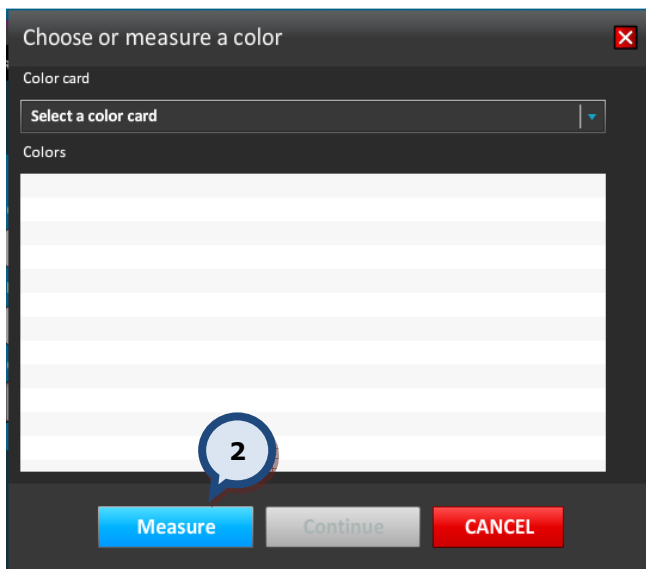
Note! It could be possible that the closest color chosen by the software does not have a formula for the product required. In this case, choose the product first then repeat the other steps.

2.4 Match a measured color

To match the measured color, use the color eye button.



1. Click on the color eye button.

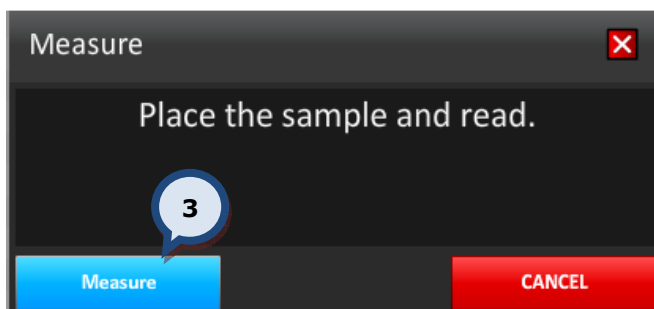


2. Then click on the **MEASURE** button.

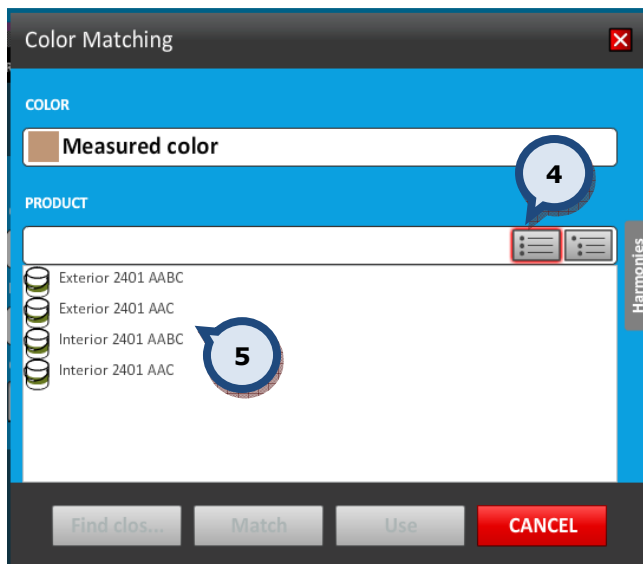
Note: The software will then check to ensure a spectrophotometer has been correctly installed. If not, then the spectrophotometer error: 'please check configuration' message will appear.

If the spectrophotometer has been installed and configured correctly, you will see the following window.

Note: if the spectrophotometer has not been calibrated, the software will prompt you at this stage to do so. See further instructions on how to calibrate a spectrophotometer in section 7.10.

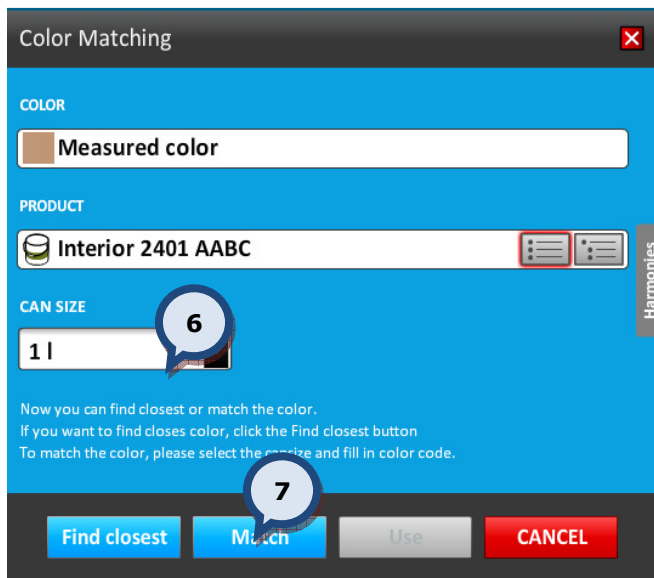


3. Place the sample onto the measuring aperture of the spectrophotometer and then click on the **Measure** button.



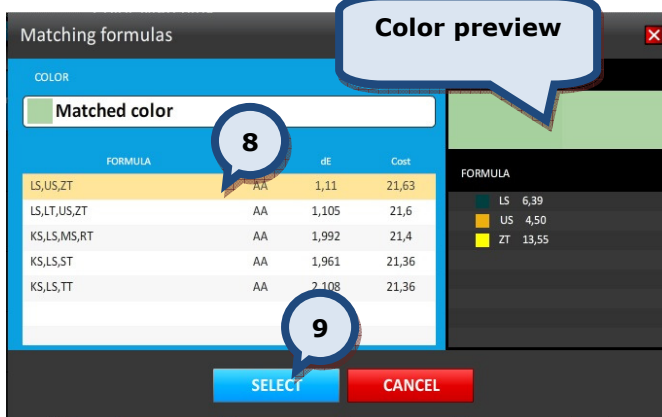
4. Click either on the **Product list**, or the **Product tree** button to select a product. Alternatively, type in the name or part of the name into the PRODUCT field.

5. Select the **Product** from the list.



6. Select a **can size** from the drop down list.

7. Click on the **Match** button.



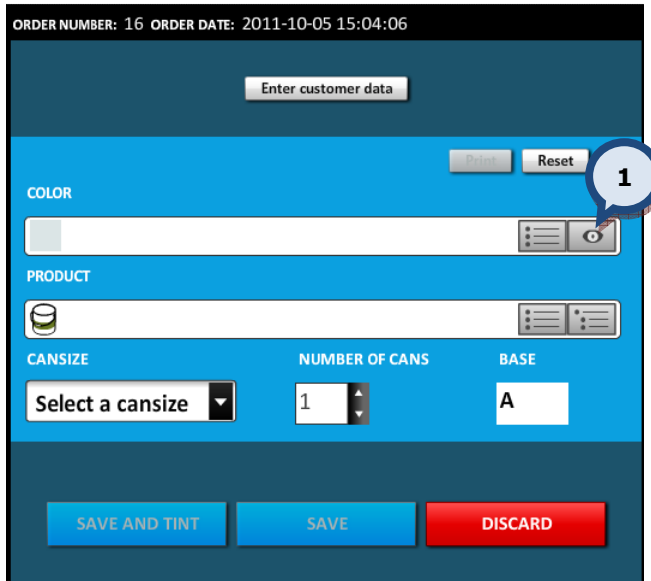
Now the list of the closest matches are listed in the table, and a preview of the selected color is displayed on the right hand side of the page.

8. Select a **color code** from the list.

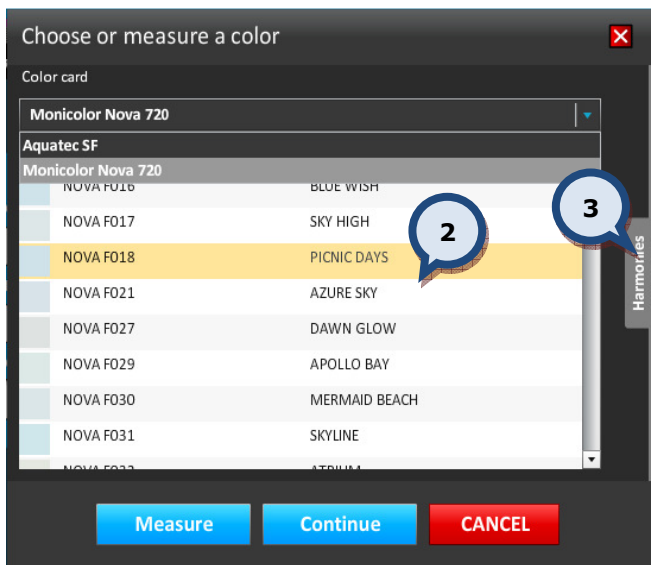
9. Click on the **SELECT** button to select a color and to return to the order entry page.

2.5 Find a harmonic color for a color card color

To search for a harmonic color to the color already selected, use the color eye button.



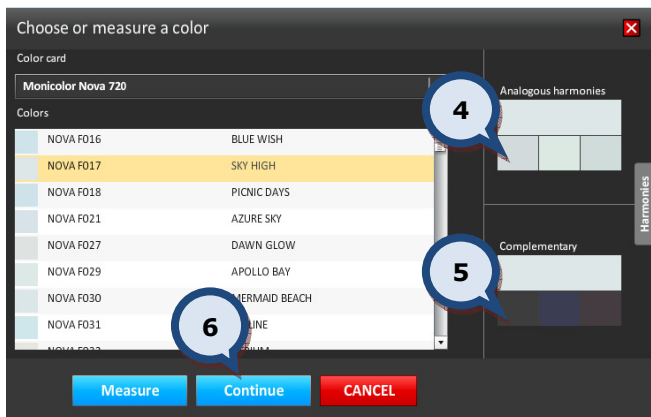
1. Click on the  color eye button.



2. Select the desired **color card** and the **color** as described in the section 2.1.

3. Then click on the **Harmonies** button.

Note: The harmonies button is only visible when there is reflectance data available for the selected color.



The color previews of the harmonic colors are displayed on the right hand side of the page.

4. Select an **analogous harmonic color** by clicking on the color preview.

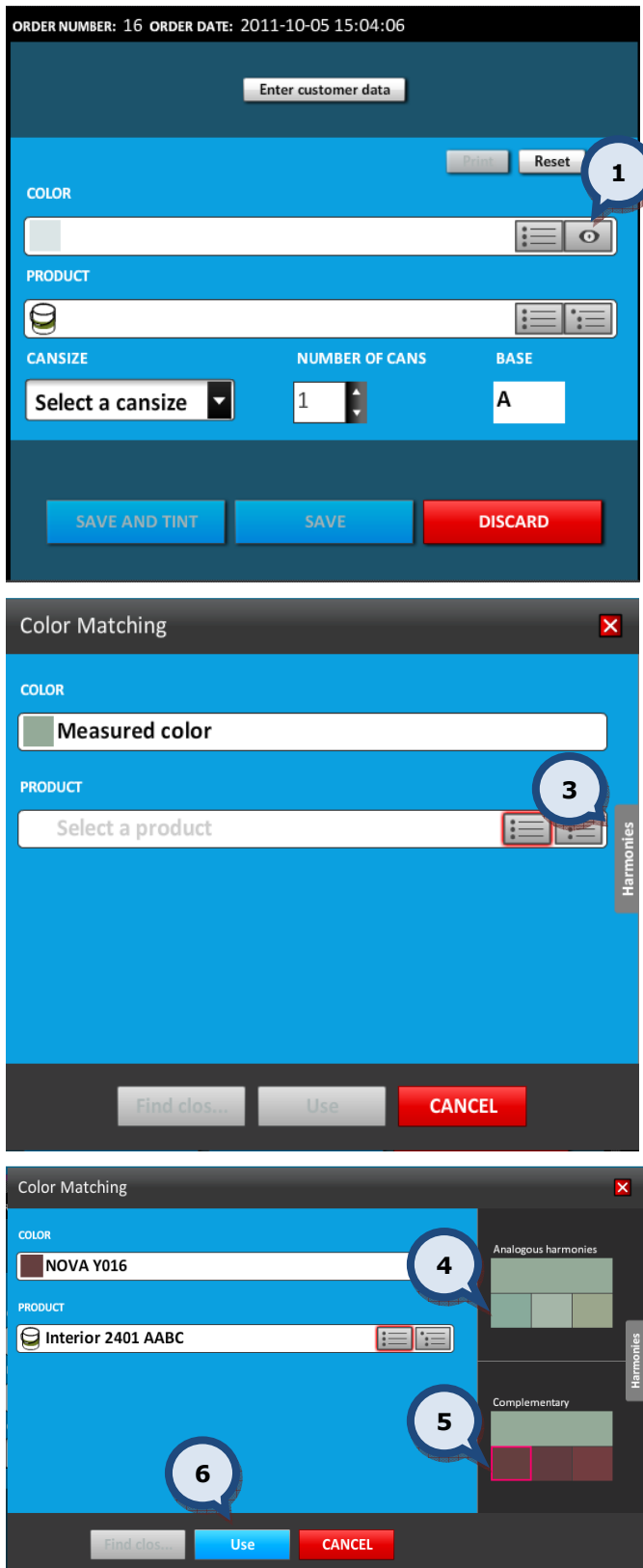
Or

5. Select a **complementary harmonic color** by clicking on the color preview.

6. Click on the **Continue** button to return to the order entry page.

2.6 Find a harmonic color to a measured color

To search for a harmonic color to a measured color, use the color eye button.



1. Click on the  color eye button.

2. Measure the **color** as described in the **section 2.1**. And select a **product**.
 3. Then click on the **Harmonies** button.

Note: The harmonies button is only visible when there is reflectance data available for the selected color.

The color previews of the harmonic colors are displayed on the right hand side of the page.

4. Select an **analogous harmonic color** by clicking the color preview.

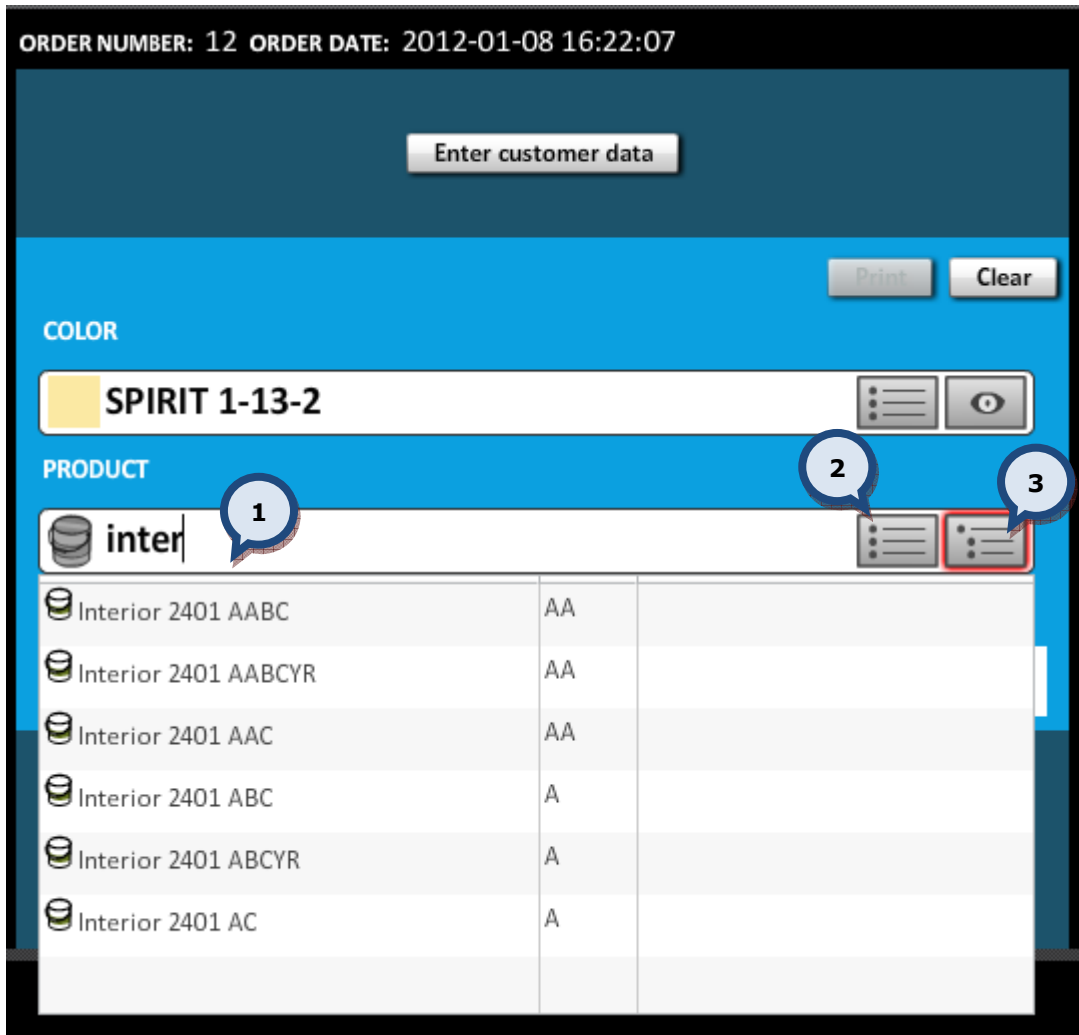
Or

5. Select a **complementary harmonic color** by clicking on the color preview.

6. Click on the **Use** button to return to the order entry page.

2.7 Product search

There are three ways in which to search and choose the desired product from the database.



Option 1:

1. Full or part of the name or code can be typed into the Product field. A search as you type function will present the possible choices from a drop down list. Click on the desired product when it becomes visible.

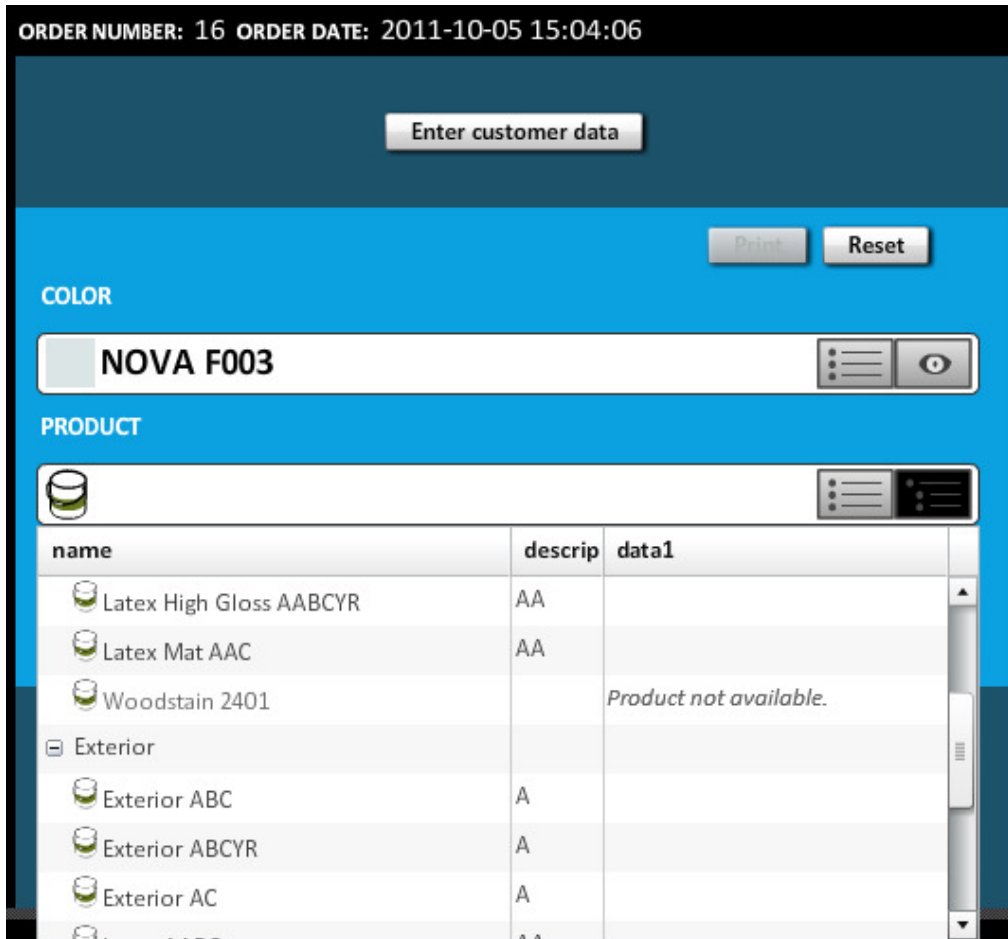
Option 2:

2. Click on the list icon to reveal a drop down list containing all of the available product choices. Navigate to the desired product and click on it.

Option 3:

3. Click on the list icon to reveal a drop down list containing all of the grouped (product tree) products. Navigate to the desired product and click on it. (see the picture on the next page).

Note: The product grouping can only be set using the **InnovaTint LAB** software.



Incompatible Product/Color combinations.

It is possible to choose with the color a product and base that are not recommended. However if either a product and/or base has been chosen that is not recommended, then the color option will show as not available.

Note: The Incompatible color/product combination function can be disabled from the **Program settings section of the Tools and settings > Options** page. See further instructions about this function in **section 7.6**.

2.8 Can size search

When a compatible choice of color and product has been made, the application will automatically show the entire possible list of can sizes that can be used. The choices of can size can be seen from the dropdown list (1), or the user can define a custom can size (2).

Note: You can set a preferred can size from the General settings section of the **Tools and settings > Options** page. See further instructions about this function in **section 7.4**. However a can size can only be created within the **InnovaTint LAB** software.

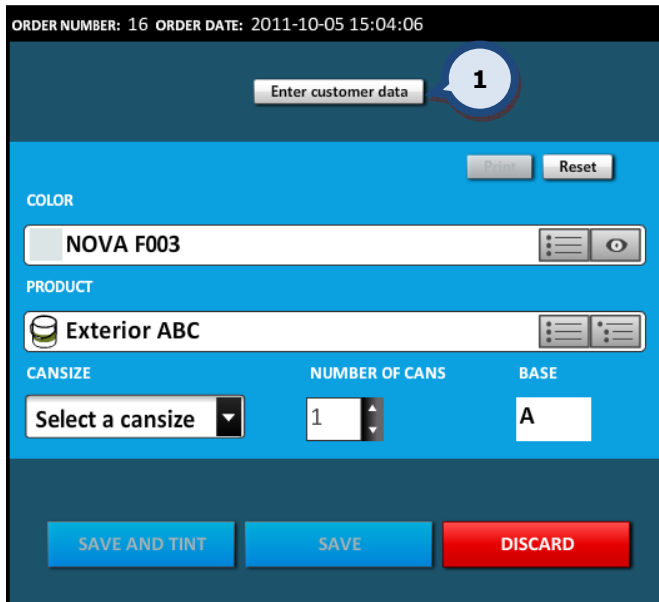
	l	kg
Nominal amount	1.000	1.000
Base amount	0.900	0.900
Colorant	0.100	0.148
Total	1.000	1.048

The user can type in a value on any of the items available: Nominal amount, Base amount, Colorant amount, or Total amount. After typing the amount into the field, other items are scaled accordingly.

The user can type values into either the **volume (1)** column or the **weight (2)** column.

2.9 Save new customer information into the order

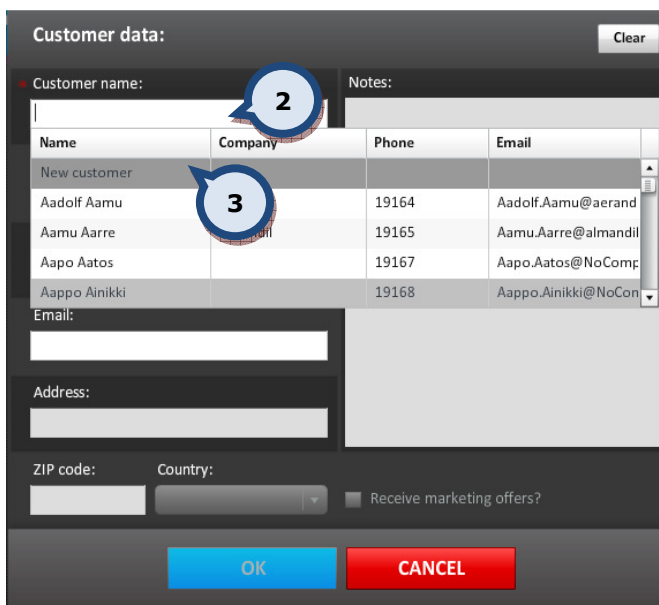
When creating or editing orders, the user is able to save the formula to a specific customer. This is particularly useful for viewing a customer's order history.



To create a new customer and enter the customer's data into that order:

1. First click on the **ENTER CUSTOMER DATA** button.

Tip! (When creating or editing an order, this can be done either before or after you have selected the product/color/etc.).



The Customer data window appears.

2. With the cursor flashing in the customer name field, press the **ENTER** key on your keyboard (once) to open up the full list of customers.

3. Navigate to the grey line containing the text **'New customer'** and select. All other fields will then become yellow.

Customer data: Clear

Customer name: 4

Company name:

Phone number:

Email:

Address:

Notes:

ZIP code: Country: 7

Receive marketing offers? 6

SAVE CANCEL

4.Enter the Customer name (mandatory information).

5.Enter any other optional customer details and notes.

The Country is preselected if the site information is completed in the **Site information section of the Tools and settings > Color matching and replication > MORE...** page.

6.Enable the **Receive marketing offers ?** check box if this customer has given permission to receive marketing material.

7.Then click on the **SAVE** button to confirm the details. This will take you back to the order page with the customer details now showing for the order.

2.10 Add existing customer information into an order

When creating a new order or editing an existing (order with **waiting...** status) one, data from an existing customer can also be added.

ORDER NUMBER: 16 ORDER DATE: 2011-10-05 15:04:06

Enter customer data **1**

Color: NOVA F003

Product: Exterior ABC

Cansize: Select a cansize | Number of cans: 1 | Base: A

Buttons: SAVE AND TINT, SAVE, DISCARD

Customer data: Clear

Customer name: Notes:

Name	Company	Phone	Email
New customer			
Aadolf Aamu	aerandir	19164	Aadolf.Aamu@aerandir
Aamu Aarre	almandil	19165	Aamu.Aarre@almandil
Aapo Aatos		19167	Aapo.Aatos@NoCom
Aappo Ainikki		19168	Aappo.Ainikki@NoCon

Email: **3**

Address:

ZIP code: Country: Receive marketing offers?

Buttons: OK **4**, CANCEL

To enter an existing customer's data into an order:

1. First click on the **ENTER CUSTOMER DATA** button.

2. With the cursor flashing in the customer name field, press the **ENTER** key on your keyboard (once) to open up the full list of customers.

3. Navigate to and select the existing customer from the list provided.

4. Then click on the **OK** button to confirm the details. This will take you back to the order page with the customer details now showing for the order.

Note: You can search for existing customers by either the customer name, customer company, phone number, or by email address. You can type either part or the full name or number. The software will search within its directory to provide possible choices.

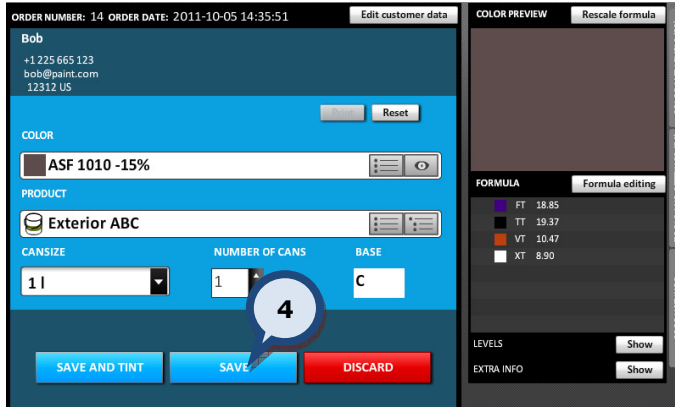
2.11 Edit an order

You can edit orders in the dispensing queue which have the status **waiting....**



To Edit an order:

1. Select the order from the orders list. The selected order will then appear in the large window.
2. Click on the **EDIT ORDER** button.



3. Make the necessary changes to the **COLOR, PRODUCT, CAN SIZE** or **NUMBER OF CANS**.

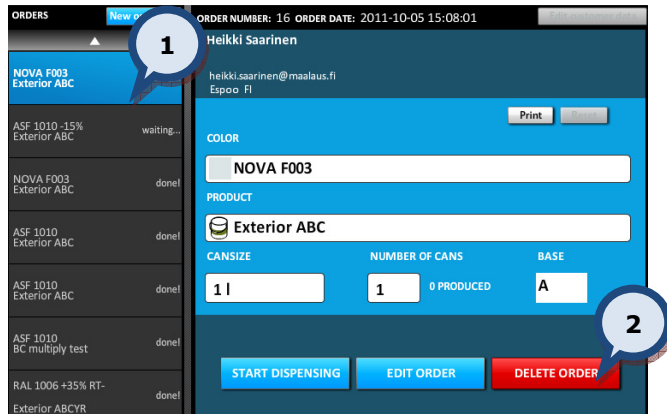
Or alternatively rescale or edit the formula (see **sections 4.3** and **4.2** respectively for further info about these functions).

4. Then click on either the **SAVE** or **SAVE AND TINT** button.

Note: You can use the **DISCARD** button to ignore any changes made and keep the details from the original order.

2.12 Delete an order

You can delete orders in the dispensing queue which have the status **waiting...**

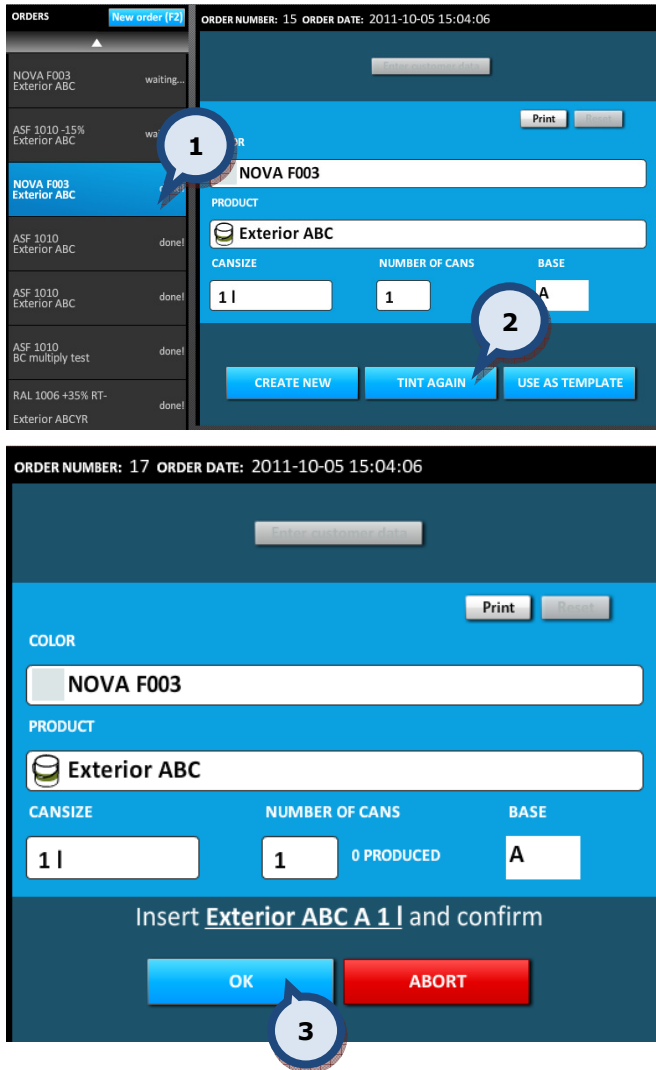


To Delete an order:

1. Select the order from orders list. The selected order will then appear in the large window.
2. Click on the **DELETE ORDER** button.
3. When the confirmation dialogue box opens up, click on the **OK** button to confirm the deletion.

3 Tint the same order again

You can re-tint orders which have the status **done!**



To **Tint again** an order:

1. Select the desired order from the orders list. The selected order will then appear in the large window.

2. Then click on the **TINT AGAIN** button to proceed.

3. You will then be asked to place the new paint can ready for tinting. Once the paint can is in place on the tinting machine, click on the **OK** button to begin the dispensing process.

4. Once the dispense has completed the order in the order list will change from the preparing status to done!.

3.1 Tint the same order again from the history tab page

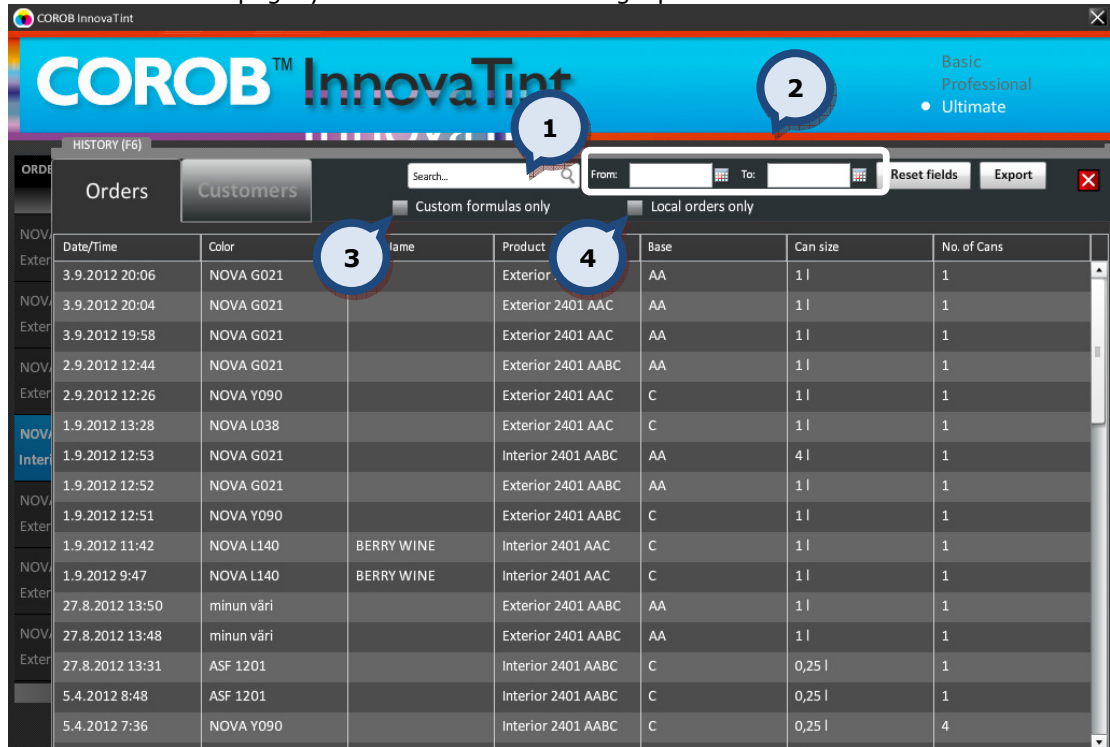
You can alternatively dispense an order again from the history view.

Date/Time	Color Name	Product	Base	Size	No. of Cans
3.9.2012 20:06	NOVA G021	Exterior 2401 AAC	AA	1 l	1
3.9.2012 20:04	NOVA G021	Exterior 2401 AAC	AA	1 l	1
3.9.2012 19:58	NOVA G021	Exterior 2401 AAC	AA	1 l	1
2.9.2012 12:44	NOVA G021	Exterior 2401 AABC	AA	1 l	1
2.9.2012 12:26	NOVA Y090	Exterior 2401 AAC	C	1 l	1
1.9.2012 13:28	NOVA L038	Exterior 2401 AAC	C	1 l	1

To Tint again an order:

1. Click on the **HISTORY** tab at the bottom of the user interface. Alternatively open up the History page using the F6 button on your keyboard. Ensure that the Orders tab page is showing.
2. Navigate and select an order from the orders list.
3. Then click on the **TINT AGAIN** button and follow the normal dispensing procedure.

Within the orders page you can use the following options to narrow down the search result:



Option 1:

1. In the Search... field you can search by color code, color name, product code, product name, or by the base code.

Option 2:

2. You can also use the FROM and TO fields to specify a certain period of time to use as the filter criteria. Further instructions on this function can be seen within this section.

Option 3:

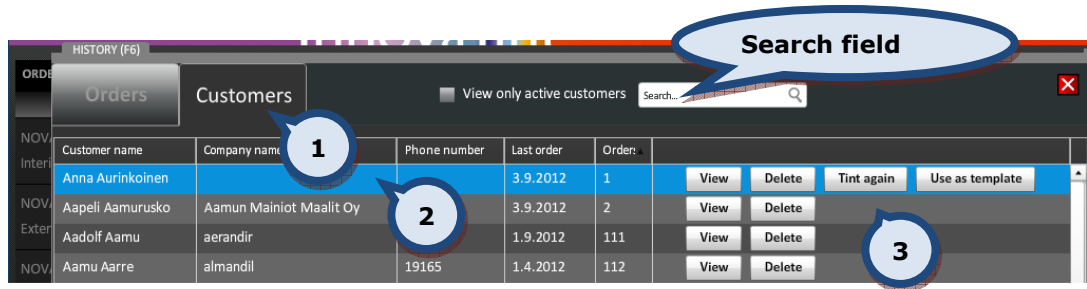
3. The search can be additionally limited to custom formulas only.

Option 4:

4. The search can be additionally limited to the orders in the local database.

Tip! The results table can be sorted into a different order by clicking on the column header.

Alternatively you can dispense the order again from the customer’s history view.



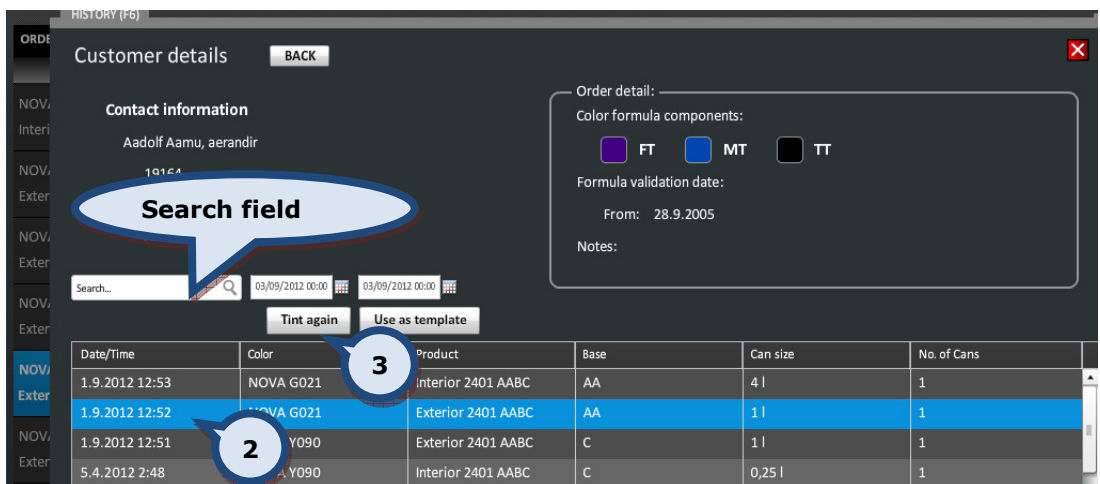
To Tint again an existing customer’s order:

1. Click on the **HISTORY** tab at the bottom of the user interface. Alternatively open up the page using the F6 button on your keyboard and navigate into the **Customers** tab page.
2. Navigate to the customer and select their previous order from the list. Alternatively type in the customer name via the search field.
3. Then click on the **TINT AGAIN** button and follow the normal dispensing procedure.

If the customer has more than one previous order you will need to distinguish which order is required to be re-tinted. You can tell that a customer has more than one previous order by two means, via the Orders column and via the VIEW button only being visible.



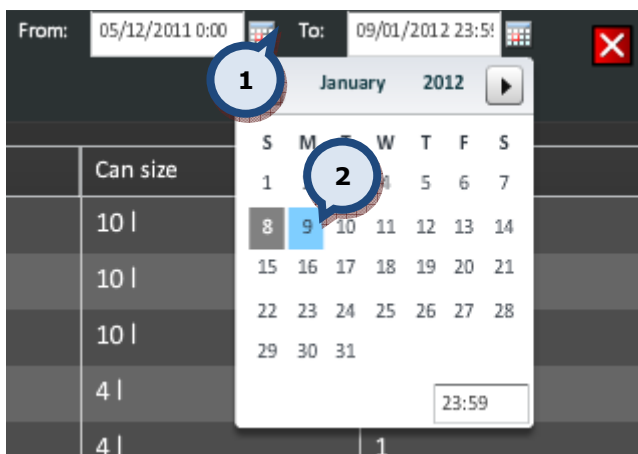
1. Click on the **VIEW** button.



2. Navigate to and select an order from the orders list.

3. Then click on the **TINT AGAIN** button and follow the normal dispensing procedure.

You can also use the **From** and **To** fields to specify a certain period of time to use as the search criteria.



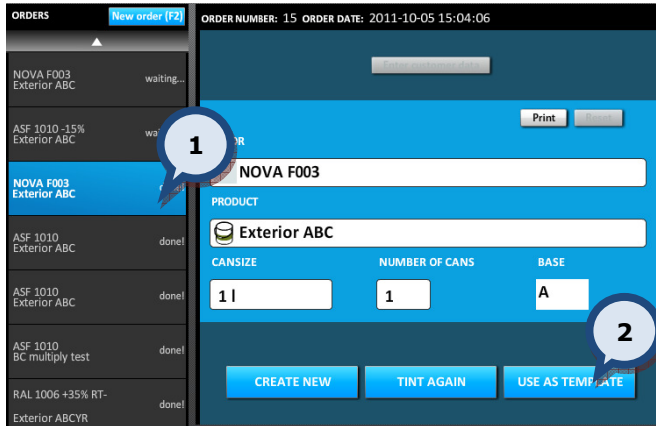
To select a time period as the search criteria:

1. Click on the buttons.

2. Select the dates from pop up calendars.

3.2 Use a tinted order as a template

You can use an already tinted order (order with **done!** status) as a template for a new order.



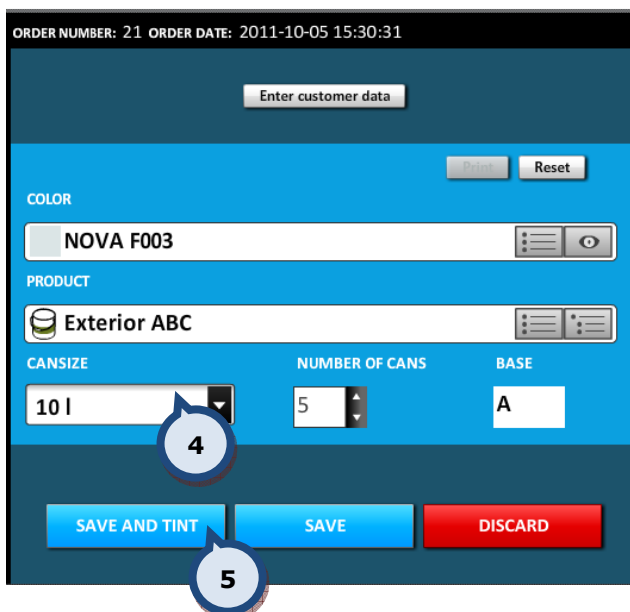
To use a tinted order as a template:

1. Select the order from the orders list. The selected order will then appear in the large window.
2. Then click on the **USE AS TEMPLATE** button to proceed with a new order, based on the template created by the previously dispensed order.



3. Change the color or product if required.

Tip! You can delete the color or product code to view the full list (or you can delete part of the code to have a filtered list view).

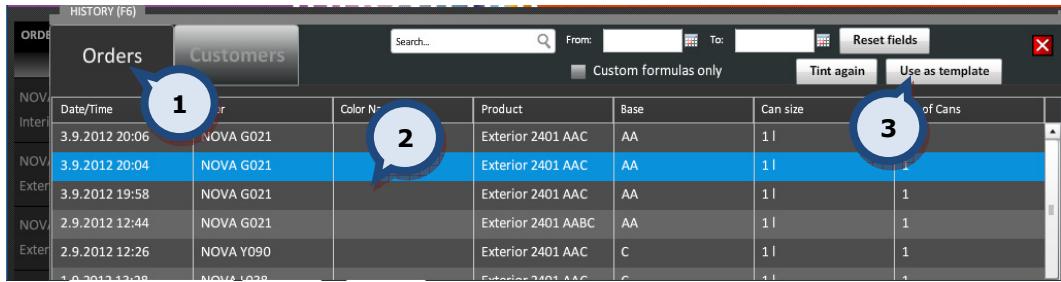


AND/OR

4. Select an alternative can size or the number of cans.
5. Once the new order has been finalised, click on either the **SAVE** or **SAVE AND TINT** button.

3.3 Use a tinted order as a template from the history tab page

You can alternatively use a tinted order as a template from the history view.

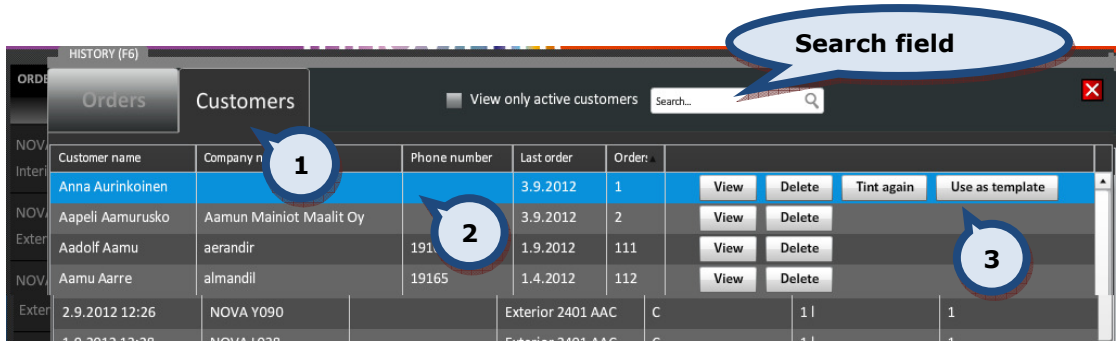


To use a tinted order as a template:

- 1.** Click on the **HISTORY** tab at the bottom of the user interface. Alternatively open up the page using the F6 button on your keyboard. Ensure that the orders page is showing.
- 2.** Navigate to the desired order and select it.
- 3.** Then click on the **Use as template** button.

Note! You can also narrow down the search result. Use the same instructions for searching as in the section named "Tint the same order again from the history tab".

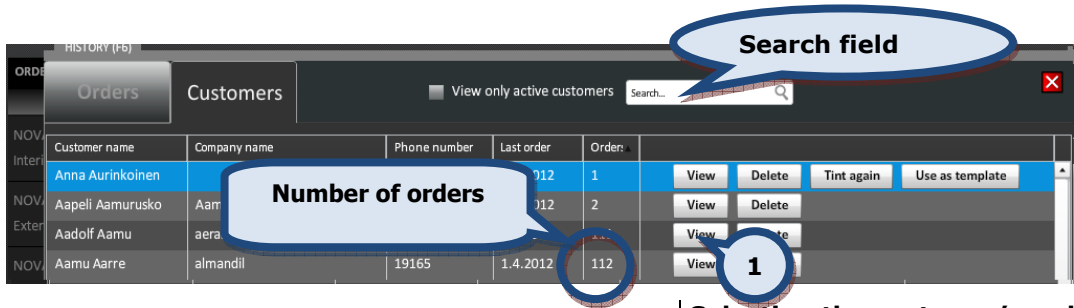
Alternatively, from the Customers tab of the History page, you can use a customer's tinted order as a template.



To use an existing customers tinted order as a template:

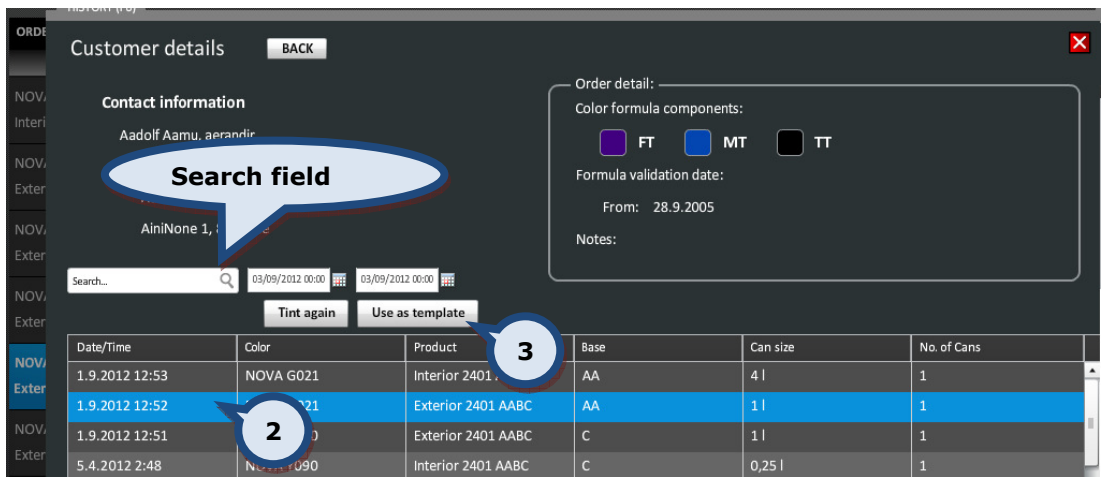
1. Click on the **HISTORY** tab at the bottom of the user interface. Alternatively open up the page using the F6 shift key on your keyboard and navigate into the **Customers** tab page.
2. Navigate to the customer and select their previous order from the list. Alternatively type in the customer name via the search field.
3. Then click on the **Use as template** button.

If a customer has previously placed more than one order, you will require narrowing down their order.



Selecting the customer's order from their previous order list:

1. Click on the **VIEW** button.



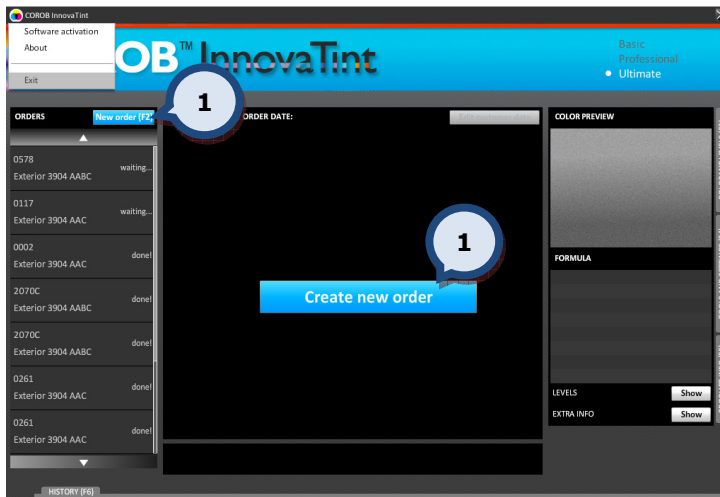
2. Select an order from the orders list.

3. Then click on the **Use as template** button.

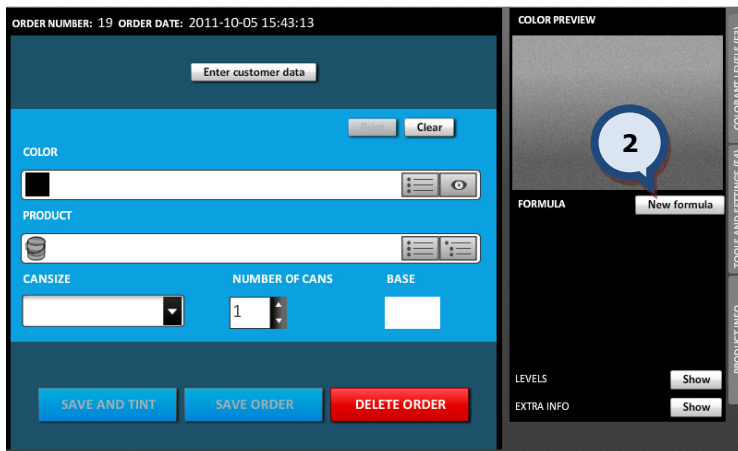
4 Create and edit a color formula

4.1 Create a new color formula

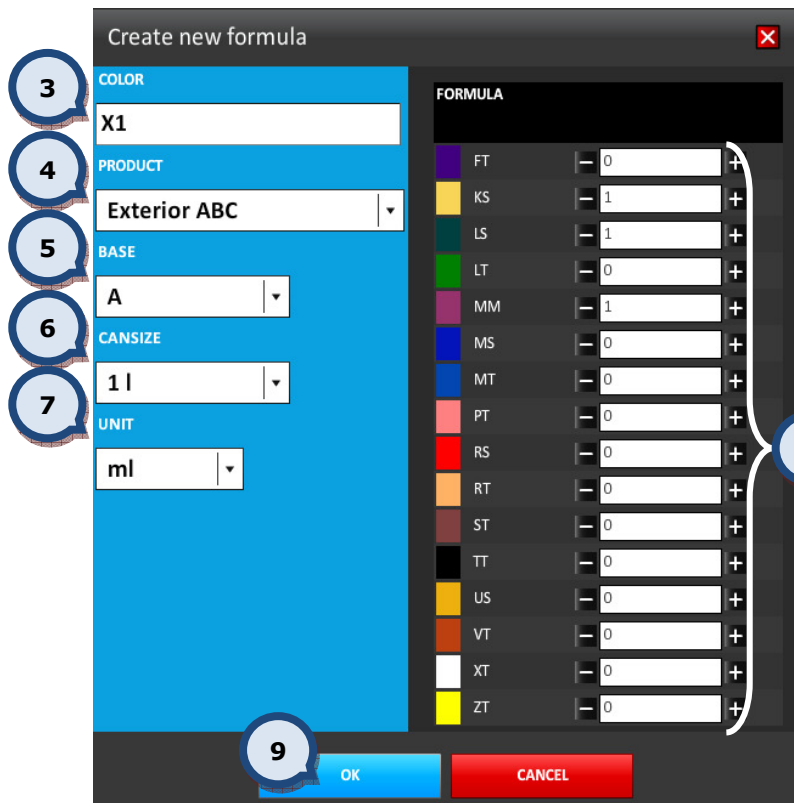
You can manually create a new color formula within the InnovaTint Ultimate program, when a new order is created. This new formula is saved only into the local database and can only be viewed and re-tinted afterwards through the History function of the InnovaTint Ultimate program.



Create a new color formula
1. Click on either the **CREATE NEW ORDER** or **NEW ORDER** button. Alternatively use the F2 button on your keyboard.

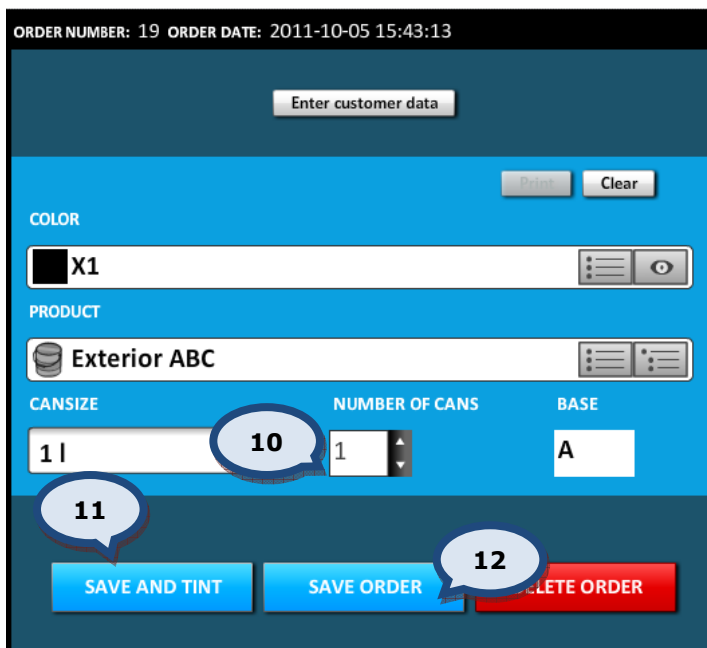


2. Then click on the **New formula** button to open up the formula creation window which is shown on the next page.



Create new formula window appears

3. Add here the name or code for the new color.
4. Select the product with which you want to dispense the formula into.
5. Select the base code of the product with which you want to dispense the formula into.
6. Select the can size of the product with which you want to dispense the formula into.
7. Select the unit of dispense.
8. Here you can type in the number of units for each colorant to be used in the color formula. Alternatively use the **-** and **+** buttons.
9. Once the formula details have been checked and approved, click on the **OK** button to save the new formula.



As with any other order

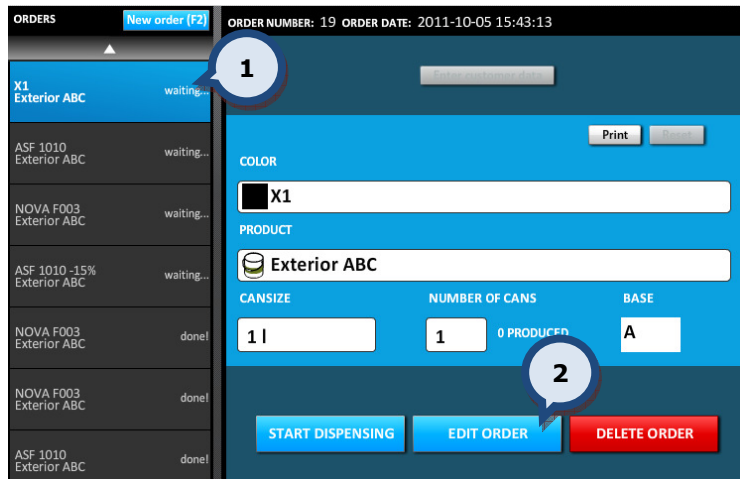
10. Select the number of cans to be dispensed.
11. Then either click on the **SAVE AND TINT** button to save the order and dispense colorants, or
12. Alternatively click on the **SAVE ORDER** button to save the order, without dispensing.

Note: If the name or code of an existing color is used in the new (or modified) formula, the original color formula is not overwritten.

4.2 Edit an existing color formula

You can edit a saved formula that is waiting to be dispensed (order with **waiting...** status).

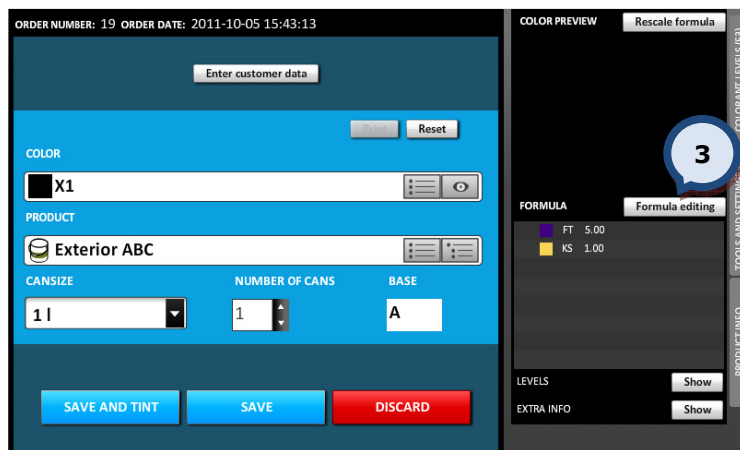
Note: You can also edit a formula at any time after you have selected the product and can size when creating a new order (order with **unconfirmed!** status).



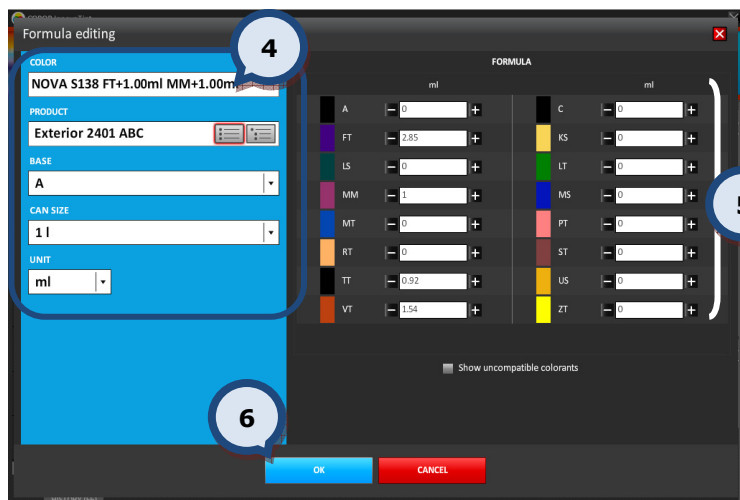
To edit an existing formula:

1. Select an order from the orders list. The selected order will then appear in the large window.

2. Then click on the **EDIT ORDER** button.



3. To then edit the colorant formula for that order click on the **Formula editing** button. This will open up the formula editing window.



Formula editing window appears

4. Edit the color code, product, base paint, can size, and the unit, if needed.

5. Edit the formula, if needed.

6. Click on the OK button to confirm the changes.

ORDER NUMBER: 19 ORDER DATE: 2011-10-05 15:43:13

Enter customer data

Print Reset

COLOR

PRODUCT

CANSIZE

NUMBER OF CANS
 7

BASE

8 **9**

SAVE AND TINT SAVE DISCARD

7. Select the number of **cans** to be dispensed.

8. Then either click on the **SAVE AND TINT** button to save the order and dispense colorants,

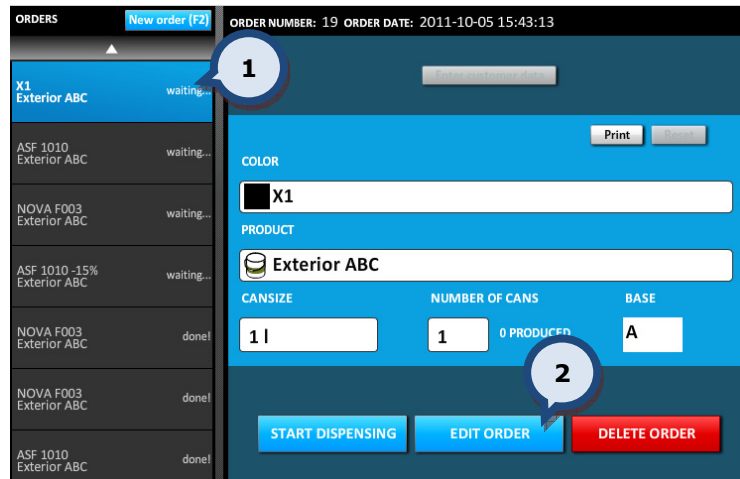
or

9. Alternatively click on the **SAVE ORDER** button to save the order, without dispensing.

4.3 Re-scale an existing color formula

You can re-scale a saved formula waiting to be dispensed (order with **waiting...** status).

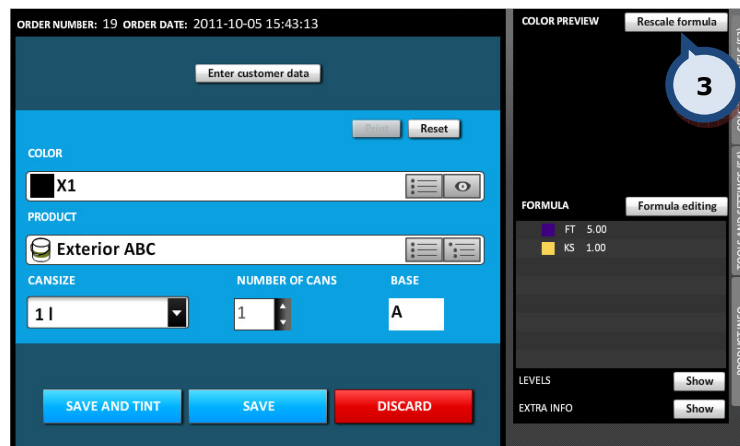
Note: You can also re-scale a formula at any time after you have selected the product and the can size (order with **unconfirmed!** status).



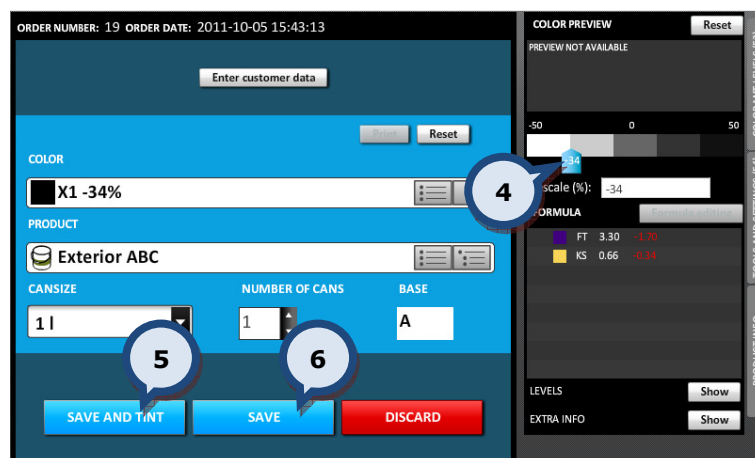
To re-scale an existing formula:

1. Select an order from the orders list. The selected order will then appear in the large window.

2. Then click on the **EDIT ORDER** button.



3. Click on the **Rescale formula** button.



The re-scale slider opens up in the COLOR PREVIEW section.

4. Move the slider bar left or right to decrease or increase the amount of the colorants. The scaling is done by percentage.

Alternatively you can enter a re-scale percentage into the RESCALE(%) field and press enter on the keyboard.

5. Once the formula adjustments have been agreed, click on the **SAVE AND TINT** button to save the re-scaled formula and tint it immediately or

6. Click on the **SAVE** button to save the re-scaled formula and place it back into the order list.

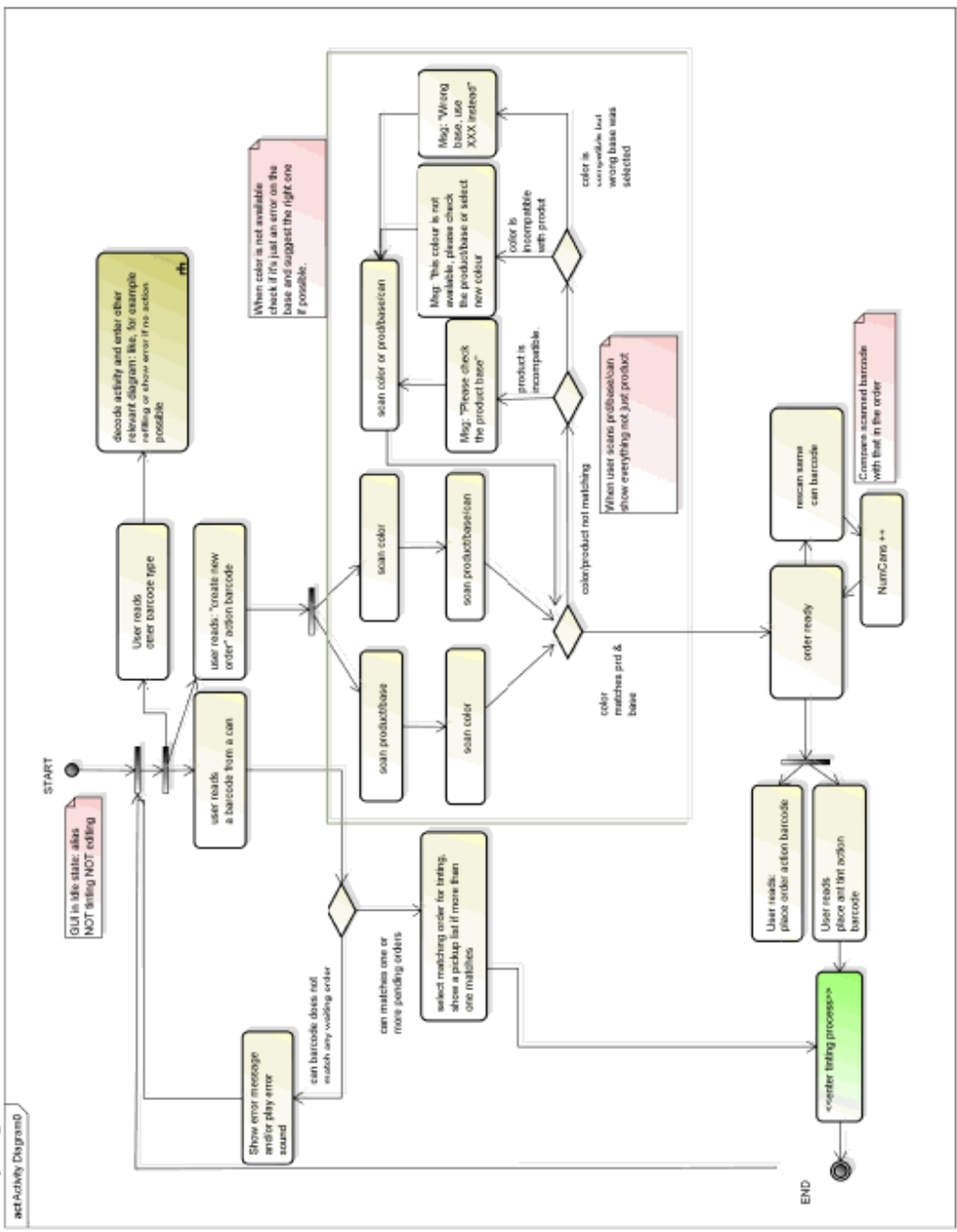
5 Bar code driven tinting

You can use bar codes to operate the InnovaTint software. With the bar code function you can, select the base paint, color, create a new order and finally dispense colorants into the paint can.

This functionality is set up in the InnovaTint LAB software. The flow chart on the next page illustrates the bar code driven tinting process.

2011/04/18

Activity Diagram0





act-Activity Diagram0

6 The colorant levels

6.1 Colorant level indicator on the main page

In the lower section on the right hand side of the page you can see the colorant level indicator. In this view, the 5 canisters with lowest colorant amounts are shown.

You can set this view to be visible or hidden by clicking on the  or  buttons.



The screenshot displays the COROB InnovaTint software interface. On the right side, there is a 'COLORANT LEVELS (F3)' panel. A callout bubble labeled 'Colorant levels tab page' points to this panel. Below it, a 'Colorant level indicator' callout points to a list of 5 canisters with their respective colorant amounts. A third callout bubble labeled 'Sorting criteria' points to a dropdown menu in the 'LEVELS' section of the panel, which is currently set to 'canisters ↑'. The list of canisters is as follows:

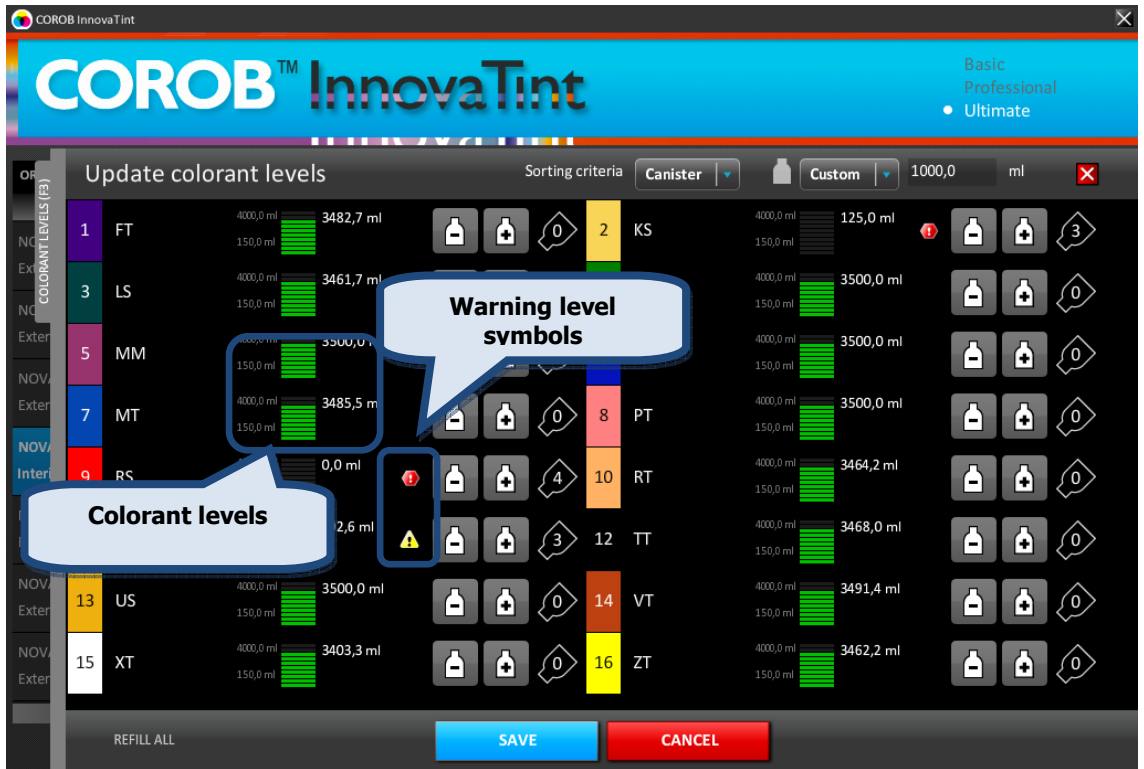
Canister	Colorant Amount
MT	59%
RT	59%
PT	60%
MM	64%
XT	67%

Note: The colorant level list can be sorted ascending or descending based on the colorant existence in the formula or by canister order in the tinting machine.

6.2 Colorant level indicators and warning levels

If you wish to view the canister levels for all of the colorants, navigate to the Update colorant levels page by clicking on either the COLORANT LEVELS tab on right hand side of the page, or by clicking on the F3 button on your keyboard.

On this page you can see the colorant level indicators and warning level symbols.



The filling levels are illustrated by green bars. Ten green bars mean that the canister is full of colorant.

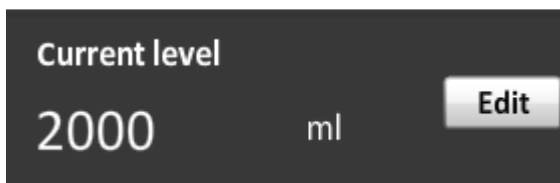
When the filling level is lower than the **warning level**, the bar color changes to yellow and a yellow warning symbol is shown.

When the filling level within the colorant canister is below the **reserve level**, a red alert symbol is shown.

6.3 Edit a colorant level manually

To get a more detailed overview of the level of an individual colorant, click on any part of the colorant field on the Update colorant levels page.

Here you can edit the colorant levels manually.



To edit a colorant level manually:

1. Click on the **EDIT** button first to enable you to edit the level.
2. Type in the colorant level amount.
3. Then click on the **SAVE** button.

6.4 Refill a colorant canister and update a colorant level

If you wish to update the colorant levels in the canisters of the tinting machine, navigate to the Update colorant levels page by clicking on either the COLORANT LEVELS tab on right hand side of the page, or by clicking on the F3 button on your keyboard.



1. Select the correct colorant can or bottle size that you are using.

2. See how many cans or bottles of colorant are needed to refill the canister.

3. Click on the + symbol 1 time for each can or bottle used.

Repeat for all colorant canisters that need refilling.

4. Click on the **SAVE** button.

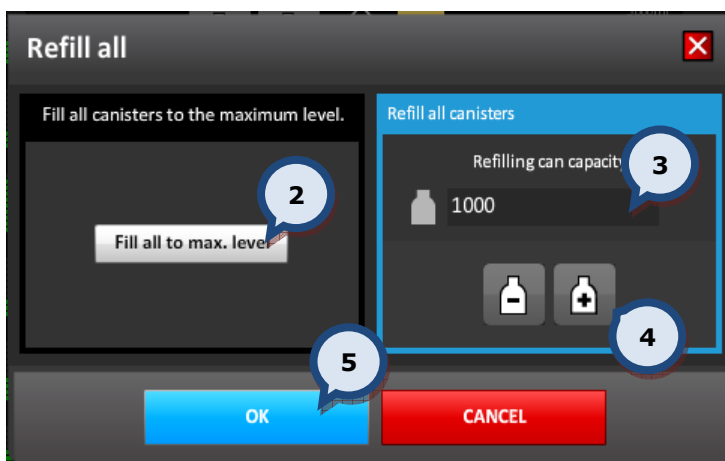
6.5 Refill all colorant canisters with the same amount

If you to update all of the colorant levels in the canisters of the tinting machine with the same amount, navigate to the Update colorant levels page by clicking on either the COLORANT LEVELS tab on right hand side of the page, or by clicking on the F3 button on your keyboard.



Update all colorant levels:

1. Click on the **REFILL ALL** button.

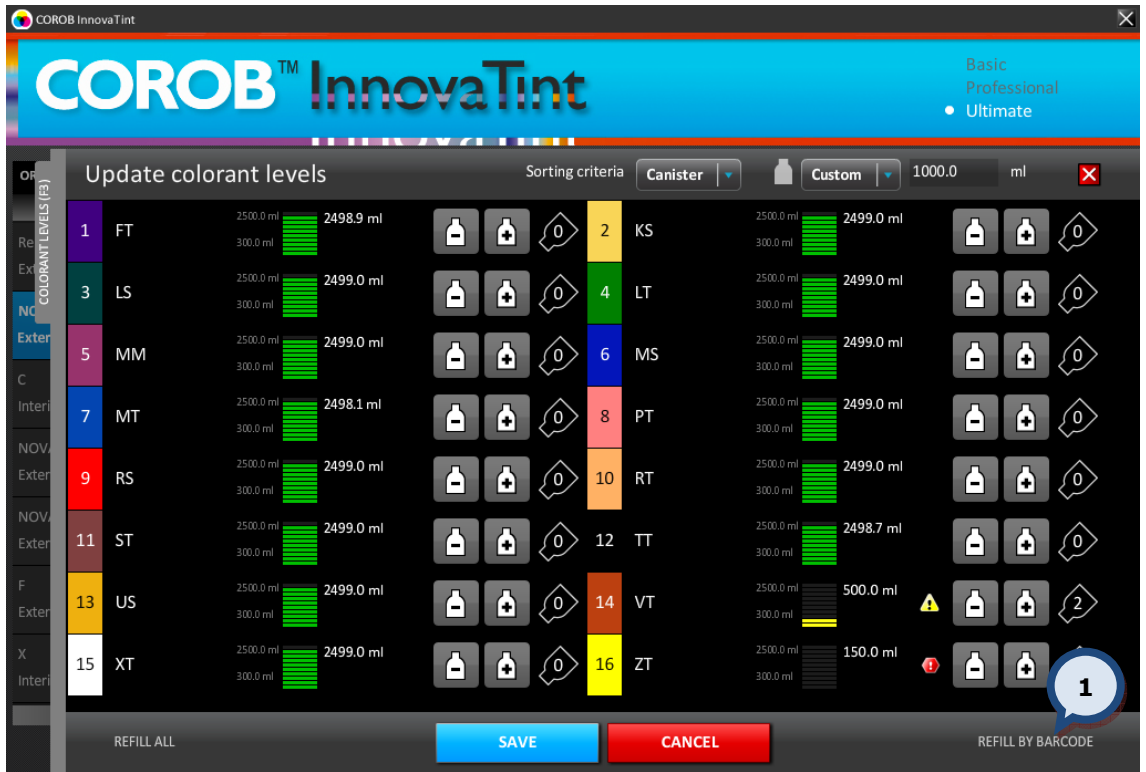


2. Then either click on the **FILL ALL TO MAX. LEVEL** button,
- OR
3. Enter the can or bottle size used.
4. Click on the **+** button to add the number of cans or bottles that have been used to refill the canister.
5. Then click on the **OK** button.

6. Click on the **SAVE** button.

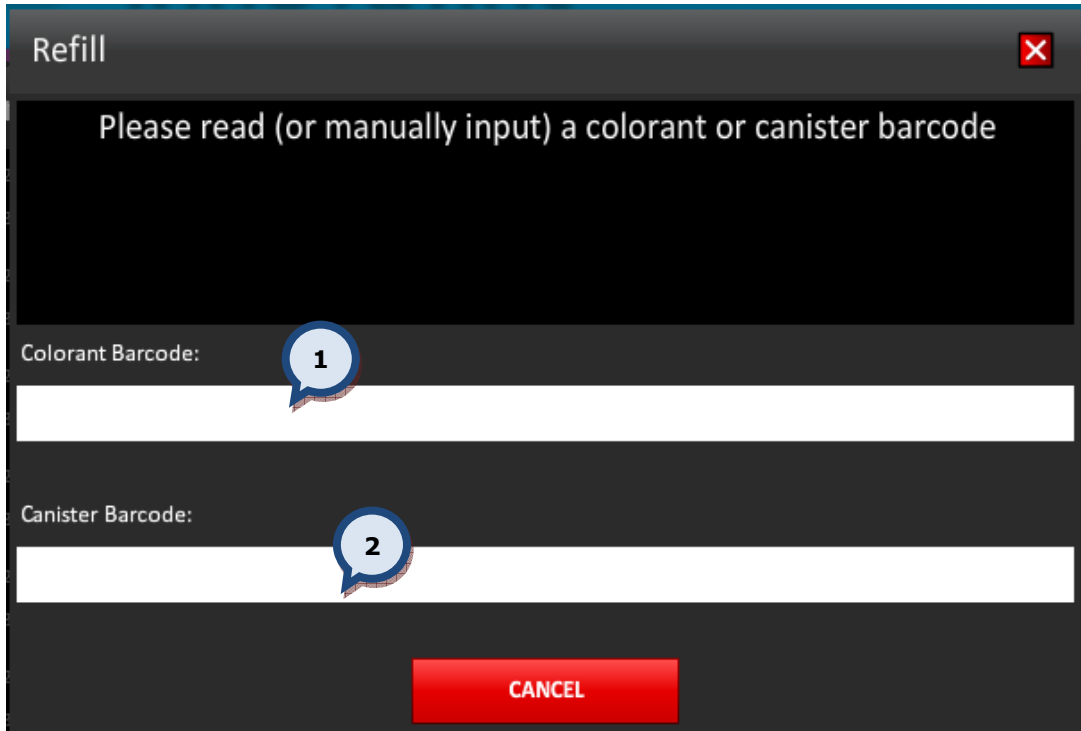
6.6 Refill a colorant canisters by using the bar code reader

If you wish to identify the colorant can and the canister by using the bar code reader while refilling the canister in the dispensing machine, navigate to the Update colorant levels page by clicking on either the COLORANT LEVELS tab on right hand side of the page, or by clicking on the F3 button on your keyboard.



1. Click on the **REFILL BY BARCODE** button.

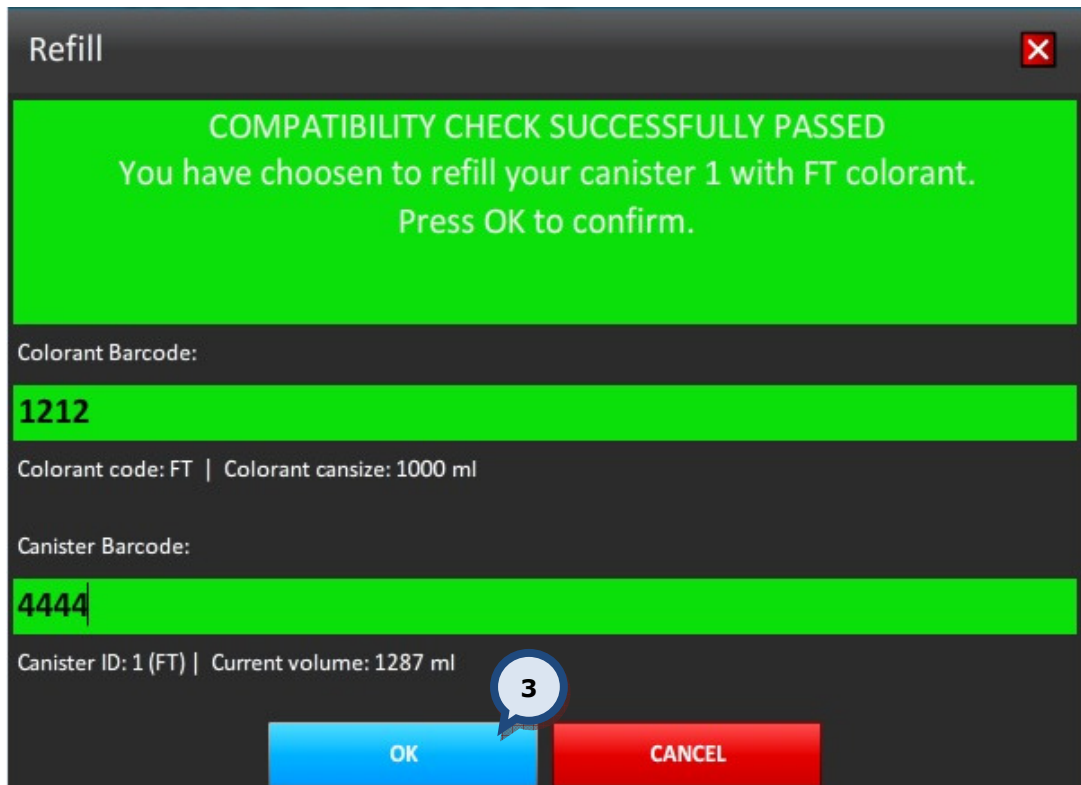
When the **REFILL BY BARCODE** button is clicked, the following window appears:



1.Colorant barcode: Place the mouse cursor into the field and read the colorant can bar code with the bar code reader.

2.Canister barcode: Place the mouse cursor into the field and read the canister bar code with the bar code reader.

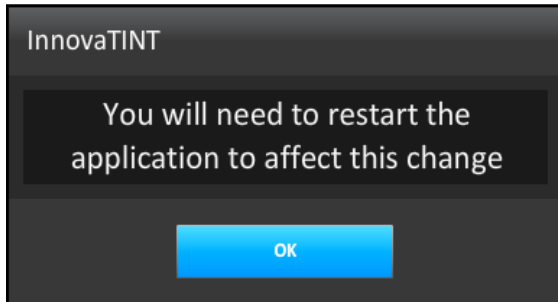
After both the colorant and canister bar codes have been read, the following message should appear:



3.OK: Click the OK button to confirm the filling of the canister with the selected colorant.

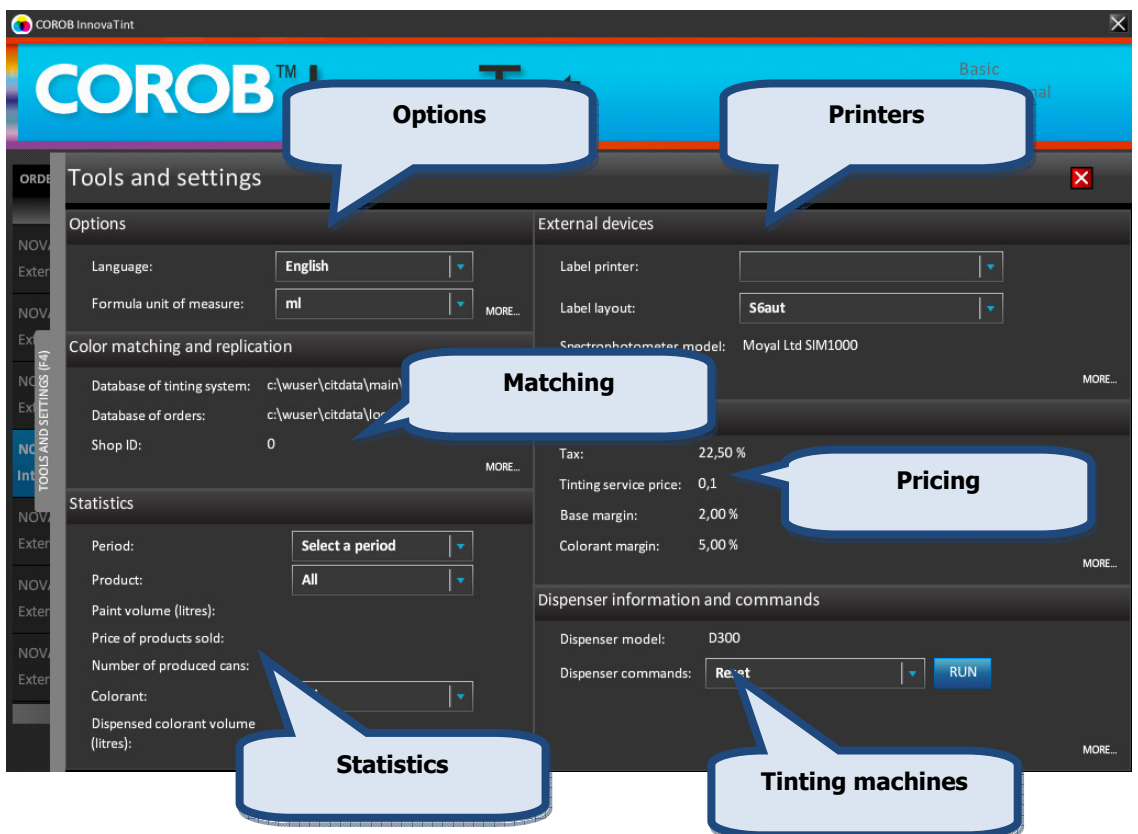
7 Program options

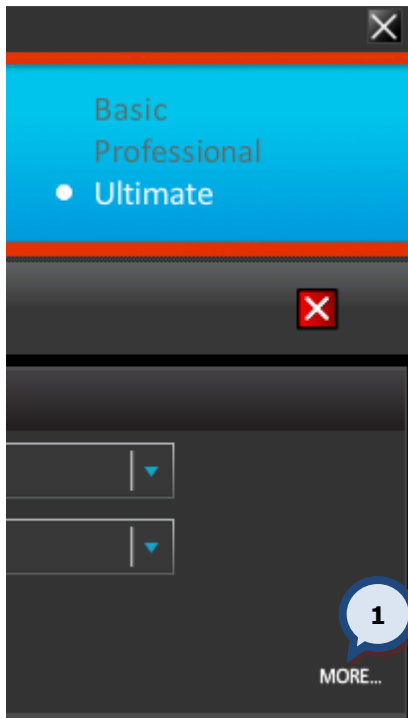
The Tools and settings tab page allows you to make changes on various settings like language, units, printers, dispensing machines, and much more. You can access the Tools and settings page by clicking on the Tools and settings tab on the right hand side of the page, or by clicking on the F4 button on your keyboard.



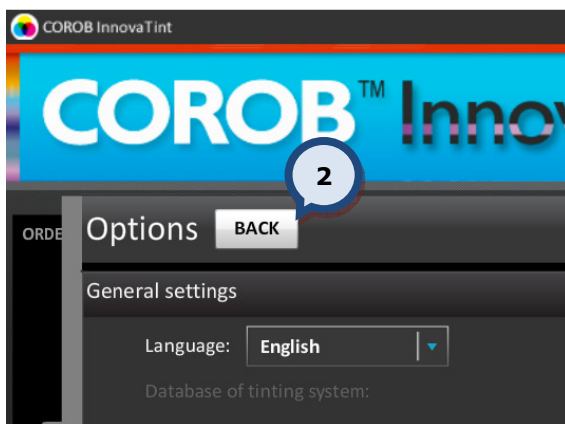
When making changes to the system settings you need to **restart** the program to make the changes effective.

The Tools and settings page is divided into six parts, of which all expand to show further possibilities.





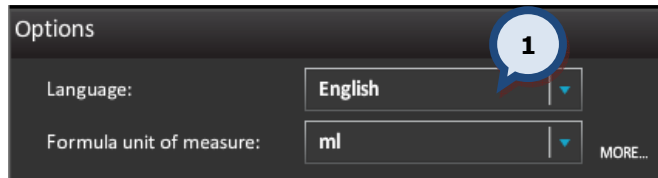
1. To view further details and options, click on the **MORE...** button within each section.



2. You can also use the **BACK** button to navigate back to the previous page.

7.1 Program language

In the **Options** section of the **Tools and settings** page, you can set the program language.

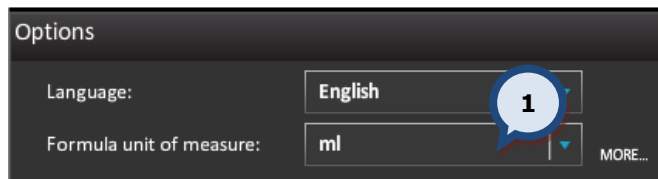


1. Select the desired language from the drop down list.

Note! The default language is English. All available languages are listed in the InnovaTint Ultimate Manual **Appendix 3**.

7.2 Formula display unit

In the **Options** section of the **Tools and settings** page, you can set the dispensing unit in which all formulas will be displayed.

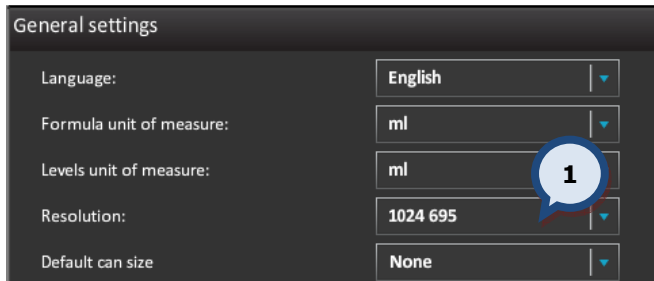


1. Select the formula's display unit from the drop down list.

This unit is used to display the color formula on the main page. Additional units can be set in the **InnovaTint LAB** software.

7.3 Screen resolution

In the **General settings** section of the **Tools and settings** > **Options** page, you can set the screen resolution.

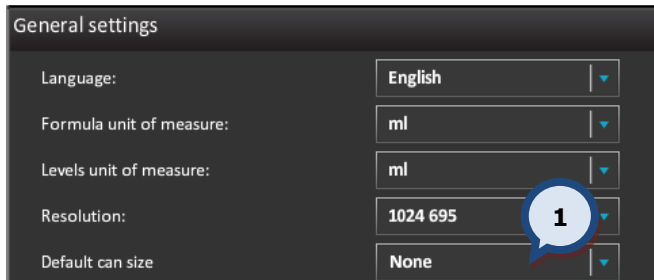


1. Select the screen resolution from the drop down list.

Minimum screen resolution for the InnovaTint Ultimate is 1024x695 (actual size 1024x768). Higher screen resolutions are supported, but the monitor used needs to support them to display the InnovaTint user interface correctly. **"Fit to page"** is the largest possible resolution without changing the width-length ratio. **"Full page"** will use all of the available window space, including the Windows "tool bar". In this way you can use the whole space provided by a wide screen monitor. When the screen is wider, then the order creation section also becomes wider.

7.4 Default can size

In the **General settings section** of the **Tools and settings > Options** page, you can set the default can size.



The screenshot shows the 'General settings' interface with the following configuration:

Setting	Value
Language:	English
Formula unit of measure:	ml
Levels unit of measure:	ml
Resolution:	1024 695
Default can size	None

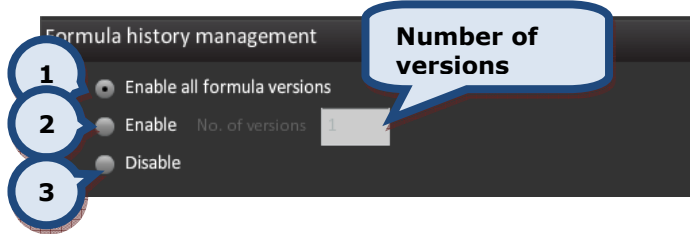
A blue callout bubble with the number '1' is positioned over the 'None' option in the 'Default can size' dropdown menu.

1. Select a default can size from the drop down list.

The default can size determines which can size is to be used as a default when making a new order. This selection will make the order process faster, but the possibility of error (due to the selection of the wrong can size) is increased.

7.5 Formula versions

In the **Formula history management** section of the **Tools and settings > Options** page, you can set the formula versions.



Use the radio button to select appropriate formula version settings:

1.Enable all formula versions: all formula versions are stored and displayed

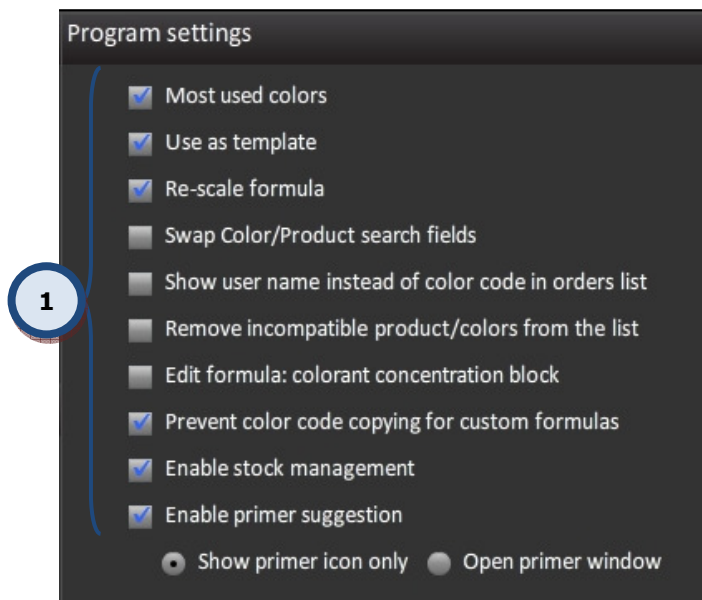
2.Enable No. of formula versions: The user can determine how many formula versions are stored and displayed (input no of versions to the text box).

3.Disable: no formula versions used

NOTE: As a default, 'enable all formula versions' is displayed. If the 'all formula versions' option is used and the selected color has alternative formula versions, then the clock icon is displayed in the notes area below the order.

7.6 Program settings

In the **Program settings** section of the **Tools and settings > Options** page, you can make additional program settings.



1. Enable the check boxes to set additional program settings.

Most used colors: This highlights the most tinted colors by the use of a yellow background. The most tinted colors will show at the top of the color selector and the yellow background will become visible in the colors list.

Use as a template: The previous order can be used as a template by which all order information is copied, including the customer information. This becomes enabled in the edit mode.

Re-scale formula: This option will determine if you wish for the re-scale slider to be visible in the main window.

Swap Color/Product search fields: This enables the product field to be placed above the color field in the order entry area.

Show user name instead of color code in orders list: This will replace the color code with the user name in the orders list.

Remove incompatible product/colors from the list This will hide invalid products/colors from the list.

Edit formula: colorant concentration block: This will enable the matching rules.

Prevent color code copying for custom formulas: This will prevent the use of an existing color code when making custom formulas.

Enable stock management: This will enable the stock management on the Stock tab page of the Tools and settings > Prices and stock > MORE... page.

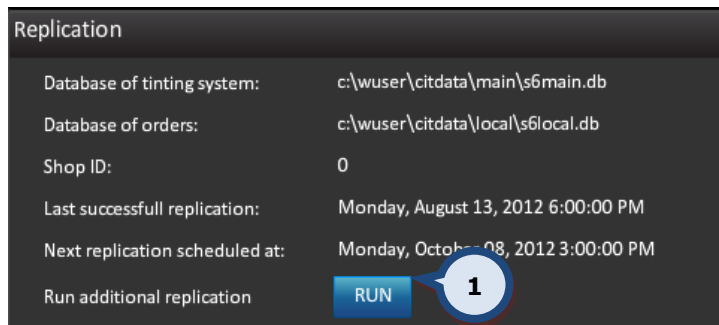
Enable primer suggestion: This will enable the automatic primer suggestion is in use to optimize the hiding of the color. There are two options to choose from via the the radio buttons:

a) Show primer icon only: When the radio button has been selected the primer icon appears in the notes area of the main screen (when a primer is needed). The primer order is automatically created.

b) Open primer window: When the radio button has been selected the primer icon appears in the notes area of the main screen (when a primer is needed) and the primer selection window is automatically opened up. This enables the user to cancel the primer selection if required.

7.7 Replication

In the **Replication** section of the **Tools and settings > Color matching and replication > MORE...** page, you can run an manual replication process.

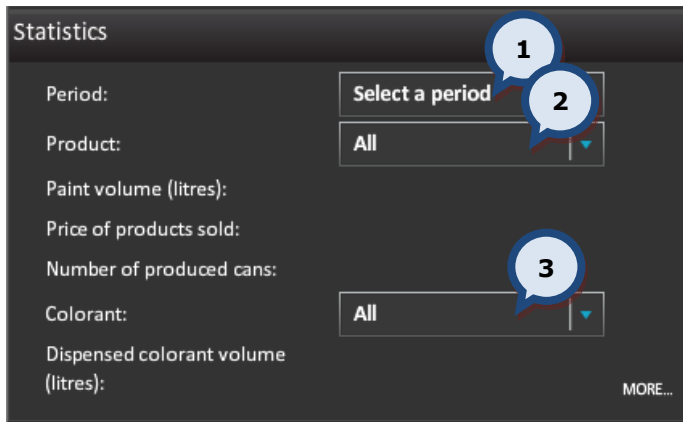


1.RUN: Click on the Run button to replicate.

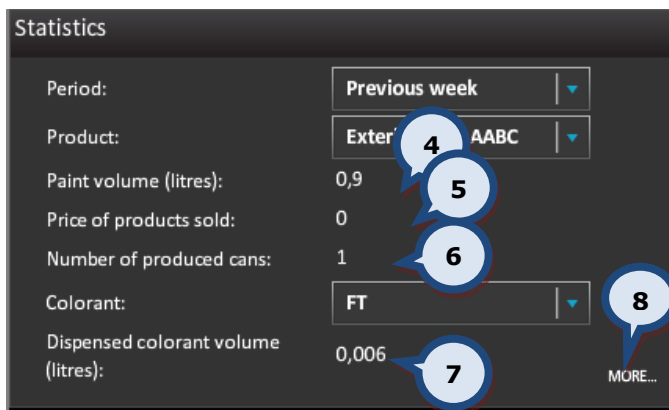
Note: All replication settings have to be set properly before the replication can be executed. Please refer to the **InnovaTint User manual** for further instructions regarding the replication settings.

7.8 Statistics

In the **Statistics** section of the **Tools and settings** page, you can view the statistics of the tinting history.



1. Select the desired viewing period.
2. Select the desired product.
3. Select the desired colorant.



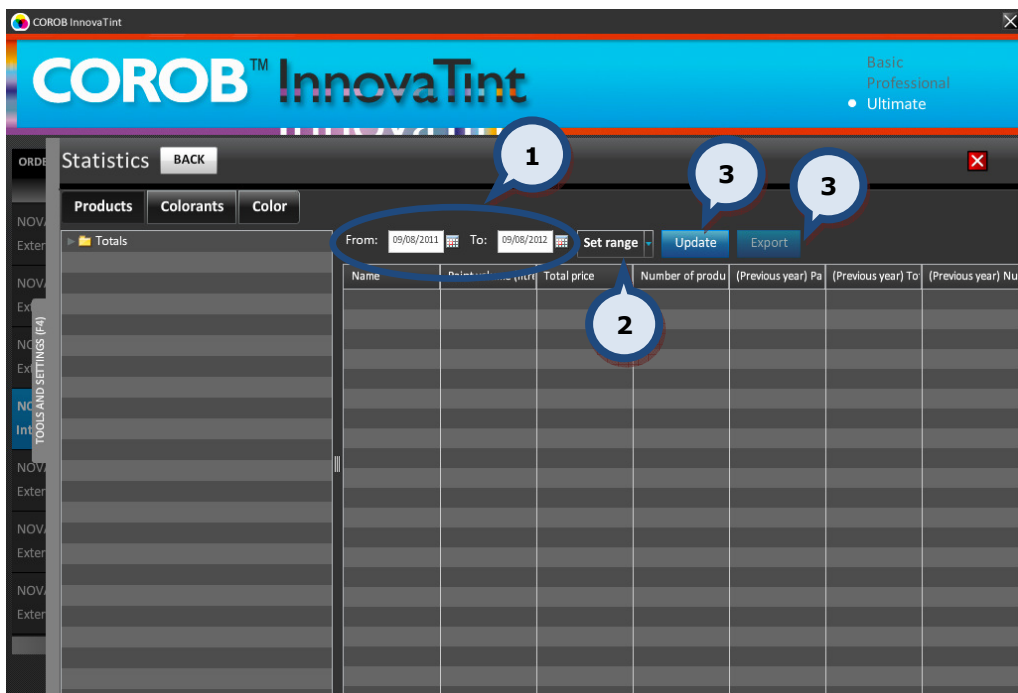
Immediately when you have made each selection above you will see the statistic search results. The displayed items are:

4. Volume of the tinted paint.
5. Price of the sold product.
6. Number of tinted cans.
7. Dispersed colorant volume.
8. **MORE...:** The button to view more details.

The **Statistics > MORE...** page has 3 different sections to view statistics. These are sorted by: **(1) Products**, **(2) Colorants**, or **(3) Color**.

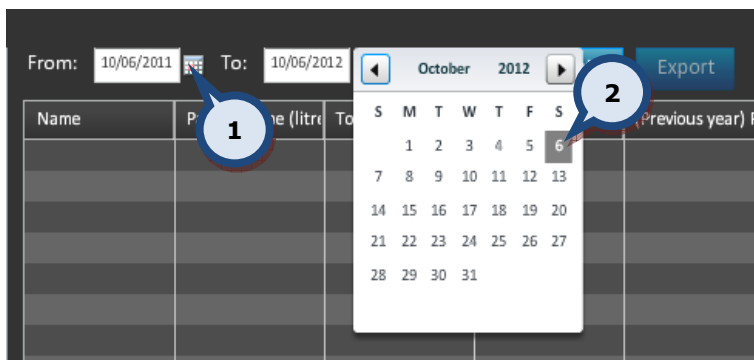





You can use the following options to narrow the search result in all of the three sub pages:



- 1. From and To:** The date fields to specify a certain period of time to use as filter criteria. See below for further instructions about this function.
- 2. Set range:** The selector field to select a predefined time range. Options are: Previous week, previous month, and previous year.
- 3. Update:** The button to clear the table content.
- 4. Export:** The button to export the statistics view from the table into a text file.

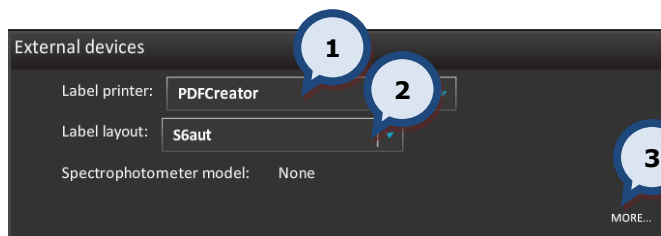
When selecting date fields with the **calendar** function, the following window appears:



- 1.** Click the  button to open up the calendar.
- 2.** Select a **date** from the calendar. You can use  and  buttons to navigate to a different month within the calendar.

7.9 Label printer

In the **External devices** section of the **Tools and settings** page, you can set the label printer and label template for printing of labels.

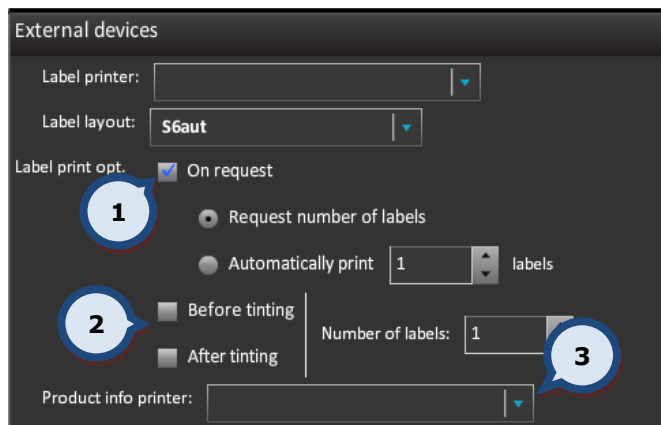


1.Select the **label printer**. This drop down list will show all printers that are installed onto your operating system. To install a new printer, follow the normal Windows printer installation procedure.

2.Select the **label template**. This drop down list will show all possible templates created with the **AnyLabel** (external software). If the user wishes to create a new label template, then they have to use the **AnyLabel** program and save the created label files into c:\wuser\anylabel\files – folder.

3.Click on the **MORE...** text for additional label printer settings.

On the **External devices** section of the **Tools and settings > External devices** page, you can set additional label printer settings, as well as set a printer for sheet material.



1.Enable the **On request** check box if you wish the labels to be printed only on request.

When printing **On request** is selected, you have two options available with radio buttons:

a)**Request number of labels:** This will enable a 'number of labels to be printed' prompt to appear before printing.

b)**Automatically print:** Set the number of labels to be automatically printed.

When automatic printing is required, two options are available (you can select either one of these or both with a combination of the On request printing). Enable the appropriate check boxes.

a)**Before tinting:** A label is always printed before dispensing of the colorants.

b)**After tinting:** A label is always printed after dispensing of the colorants.

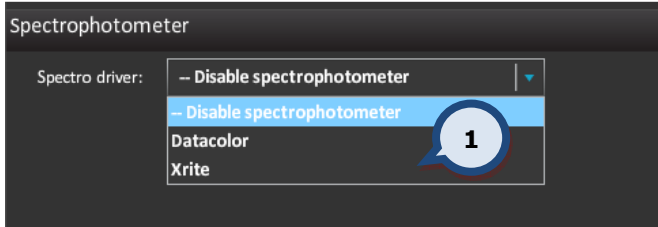
Additionally, you can set the number of copies printed in the **Number of labels** field. The default value is one.

3.Product info printer: Select the printer to print out the product information from the drop down list.

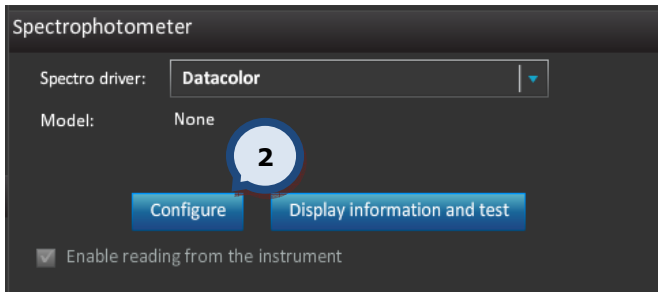
7.10 Spectrophotometer installation

In the **Spectrophotometer** section of the **Tools and settings > External devices** page, you can install and configure your spectrophotometer.

Note: These functions are only valid for Datacolor and Xrite spectrophotometers.

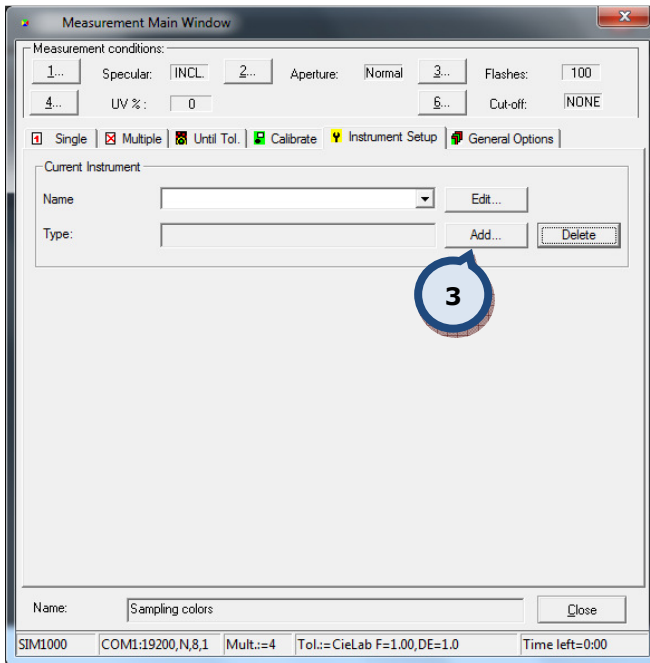


1.First, select a **spectrophotometer driver** manufacturer from the drop down list.

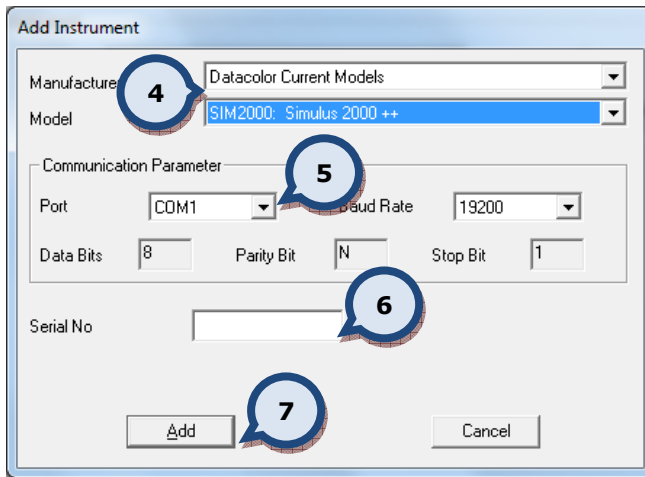


2.Then click on the **Configure** button.

Note: "Enable reading from the instrument" check box should be enabled.



3. Click on the **Add...** button to install a new device.



4. Select the Manufacturer and Model of the spectrophotometer that you are installing.

5. Select the Communication Parameters.

(Default values are typically OK.)

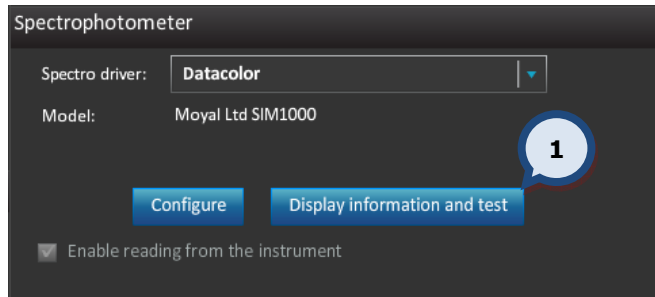
6. Input the Serial Number of the spectrophotometer.

7. Click on the **Add** button to install the new device.

7.11 Spectrophotometer calibration

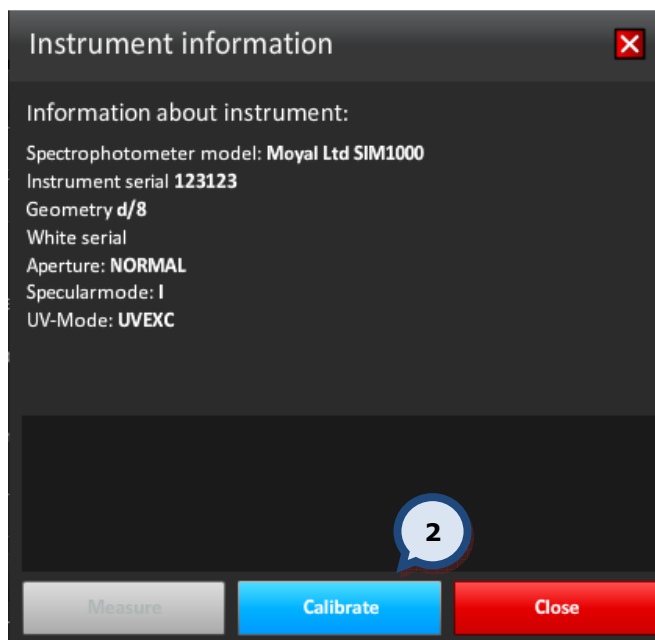
In the **Spectrophotometer** section of the **Tools and settings > External devices** page, you can calibrate your spectrophotometer.

Note: These functions are only valid for Datacolor and Xrite spectrophotometers.

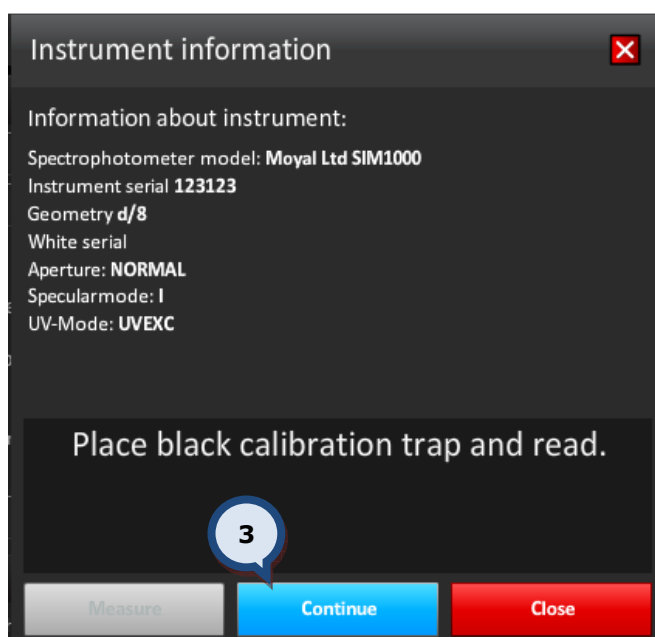


1. First, click on the **Display information and test** button.

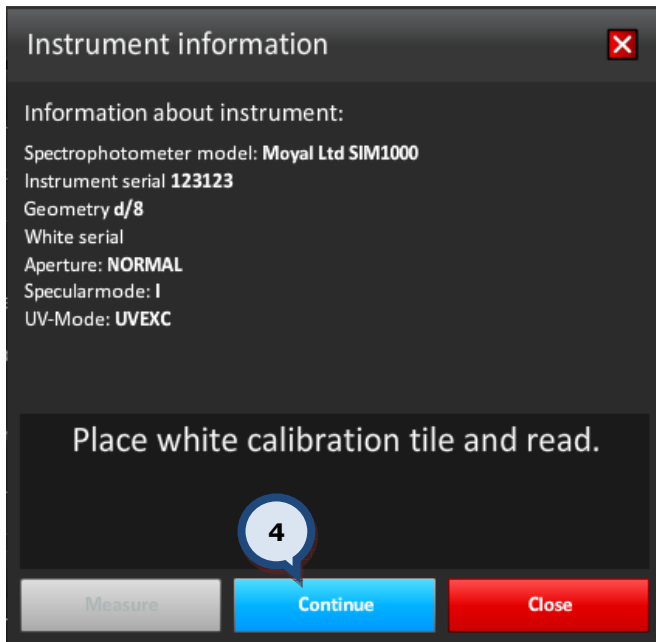
Note: At this stage, your spectrophotometer should be connected to the computer and the installation of the spectrophotometer should have been successful. See instructions on how to install a spectrophotometer in section 7.9.



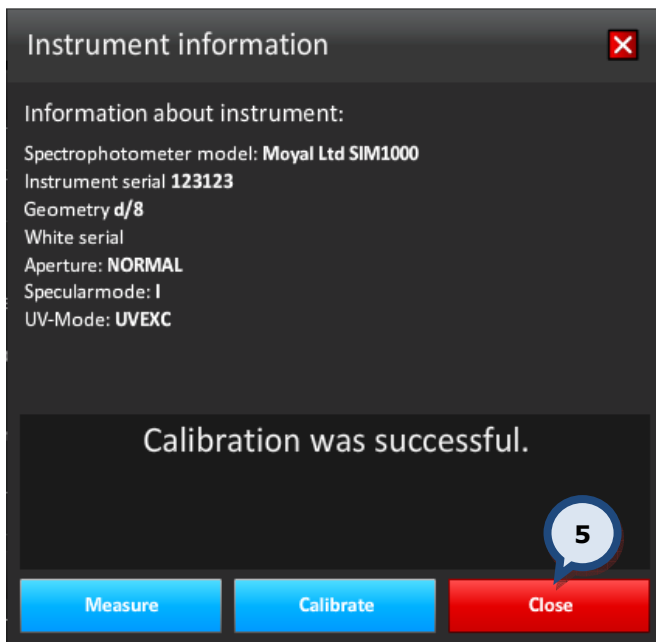
2. Then click on the **Calibrate** button.



3. Then place the **black calibration trap** onto the spectrophotometer's measurement aperture and click on the **Continue** button.



4. Then place the **white calibration tile** onto the spectrophotometer's measurement aperture and click on the **Continue** button.



5. Finally, click on the **Close** button to finish the calibration process.

7.12 Formula export to a non-Corob tinting machine

In the **Formula exchange** section of the **Tools and settings > External devices** page, you can set a file to handle the formula export to non-Corob brand tinting equipment.

1. Set the **file name and location** for the formula to be received.

This is the file name and location into where the formula (order) will be received from an external tinting device (other than Corob). InnovaTint can receive orders from an external source if the incoming information is according to the syntax of Flink (by Corob). It must also have the same product and colorant coding as in the InnovaTint database. The minimum requirement is that the colorant codes are equal within the incoming order and within the InnovaTint database. If an incoming order has the correct codes for the colorants, product, base paint and can size, then the order can be accepted automatically, otherwise the order will be handled as a "new formula" and the missing information has to be added manually.

2. Enable the **transmission** check box and set the **file name and location** for the formula to be sent.

This is the file name and location into where the formula (order) will be sent to an external tinting device (other than Corob). Communication between InnovaTint and Corob tinting equipment is handled automatically, but if the user needs to use tinting equipment made by another supplier, the Flink protocol can be used to send the formula information to this device. The driver of the tinting equipment needs to be able to use the Flink protocol. If this procedure is used, the InnovaTint driver and colorant Levels tab page will become disabled.

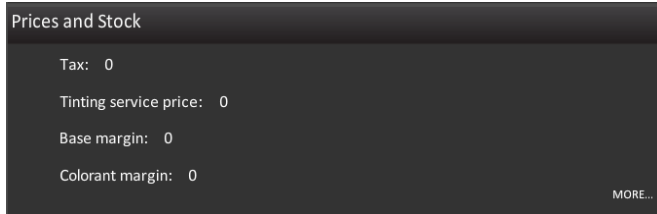
3. Regarding the use of the InnovaTint driver, there are two options:

a) **Use with InnovaTint drive:** The Corob tinting machine is used for tinting, and the formula is also sent to the Flink file. The Flink file can be used to send formula to another program e.g. external statistics program.

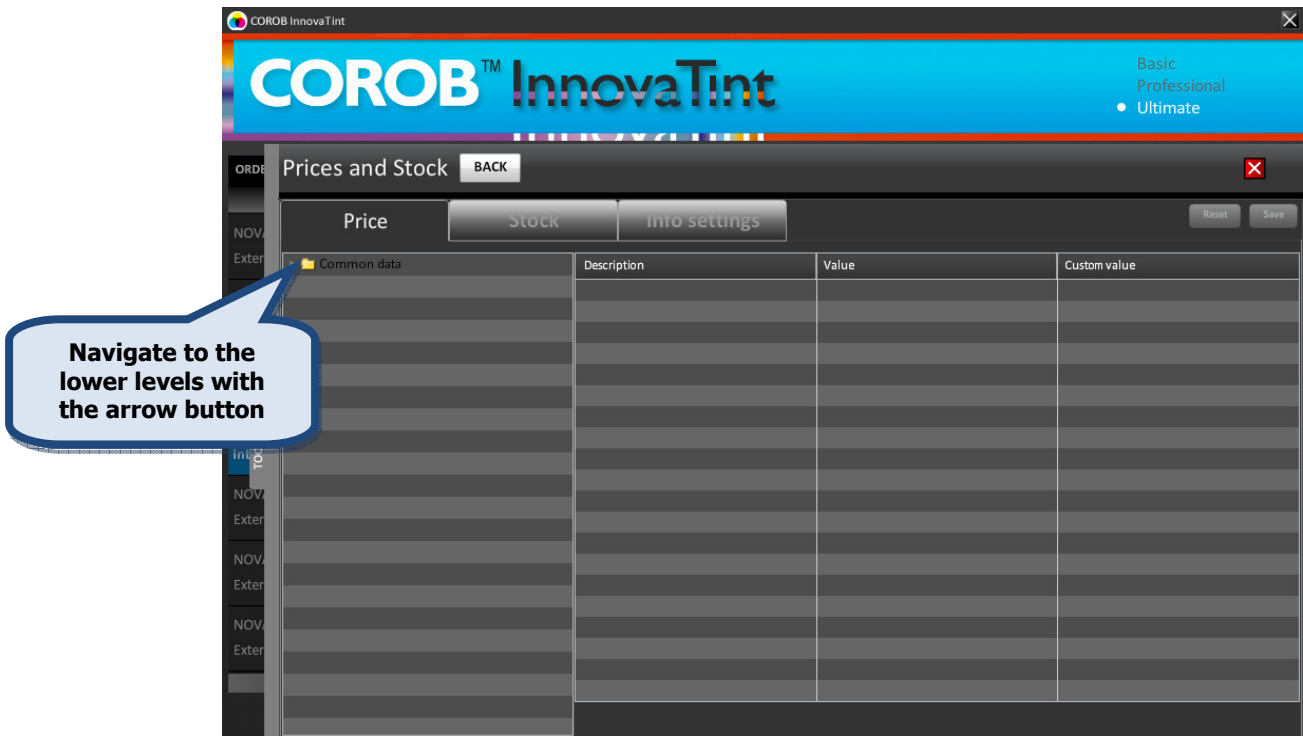
b) **Disable InnovaTint driver:** The InnovaTint driver is disabled and the Flink file is used to communicate with the non-Corob tinting equipment. Furthermore, the LEVELS table in the main page, the COLORANT LEVELS tab, the Dispenser information and the commands area are disabled.

7.13 Prices for colorants, products, and cans

In the **Prices and stock** section of the **Tools and settings** page, you can view taxes, tinting fees, and margins.



In the **Price** section of the **Tools and settings > Prices and stock** page, you can set custom values for colorants, cans, and products. All items have sub-items, and you can use the arrow button on the keyboard to navigate to the lower level. The Lower level value will overrule the higher level values.



Price calculation is driven by a number of parameters that may be inserted into the PRICE-tables in the main database, and in the corresponding PRICE-tables in the local database.

If the same parameter is found in multiple tables, the value from the highest priority table is used, according to this order:

- PRICE_COMMON (lowest priority)
- PRICE_CANSIZE
- PRICE_PRODUCT
- PRICE_BASE
- PRICE_CAN

PRICE_CNT (highest priority)

Unless the parameter is locked in the main db, the values in the local db will have the priority. The parameter is locked by inserting the parameter name into PRICE_LOCK. If locked, the corresponding values in the local db are ignored.

Except for the rounding steps which have a default of 0.01, all other missing parameters are assumed to have a value of 0. The following table lists all of the parameters and the tables in which each might be inserted:

Parameter	Description	PRICE_COMMON	PRICE_CANSIZE	PRICE_PRODUCT	PRICE_BASE	PRICE_CAN	PRICE_CNT
TAX	Tax rate	√					
TINTFEE	Tinting fee	√	√	√			
BCOST	Base cost per can					√	
BCOSTL	Base cost per liter (for custom can size)				√		
BMARGIN	Base margin rate	√		√	√		
BPRICE	Base price					√	
CCOST	Colorant cost						√
CMARGIN	Colorant margin rate	√					√
BROUND	Rounding step for base price	√					
CROUND	Rounding step for colorant price	√					
LROUND	Rounding step for list price	√					
PROUND	Rounding step for (final) price	√					
USEPG	Enable price groups (non-zero value)	√		√			
PGLIMIT	Price group limit (colorant cost/nominal quantity, in L or kg) for each price group	√		√	√		
PGCPRICE	Colorant price according to price group		√				
PGPRICE	Total list price according to price group					√	

Tax and margins are inserted as numbers between 0 and 1. Tax is relative to tax-free price and margin is relative to selling price.

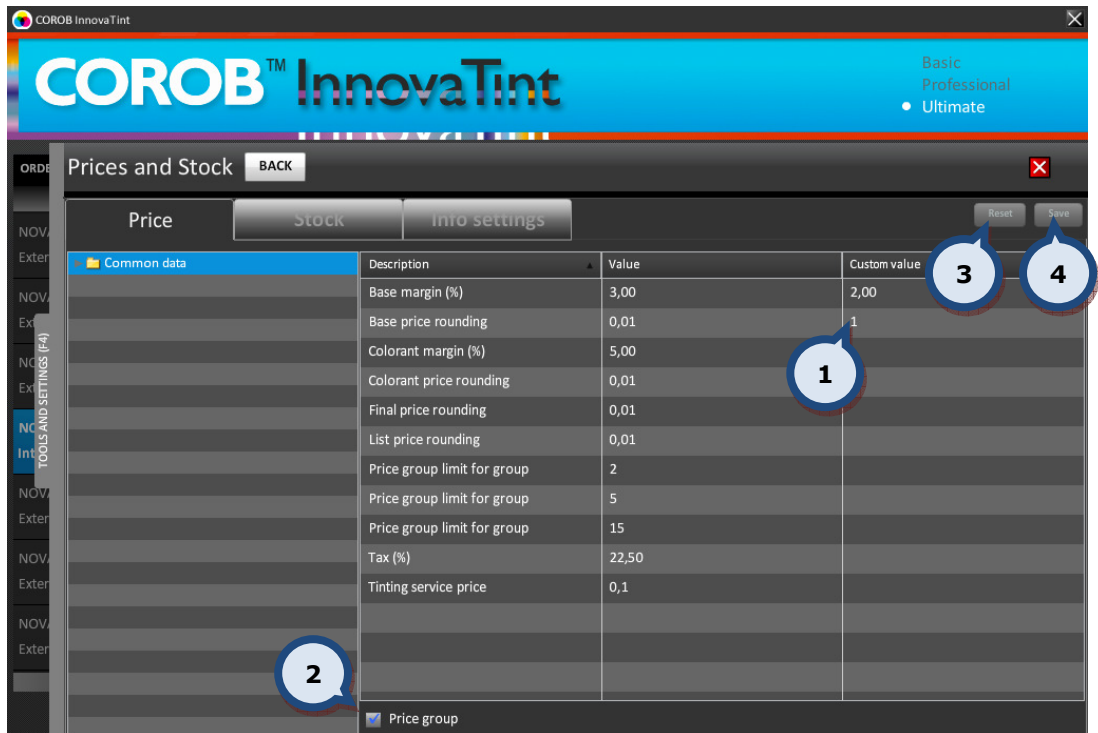
It is possible that some or all of the items are disabled. These have been disabled using the "LOCKS" function in the InnovaTint LAB software. This will prevent custom values being used instead of predefined values. In this case, the user can input a new value into the table, but it will not be saved into the local database.

The rounding of values are done according to the following example:

1.012 -> 1.01

1.015 -> 1.02

In the 'Common data' level, the user can define the following custom values into the custom value column:



- 1.The **Custom value** field in which data can be entered.
- 2.The **Price group** check box to set price groups to be visible.
- 3.The **Reset** button to return to the default values.
- 4.The **Save** button to confirm the changes made.

Note: The price groups are set up in the InnovaTint LAB program. When the price groups are not set up in the InnovaTint LAB software, the items related to the price groups are not visible on the next pages.

Items in this level are:

Base margin (%) = $\text{Base price} - \text{Base cost} / \text{Base price} * 100\%$

Base price rounding= The rounding of the base paint price

Colorant margin (%) = $\text{Colorant price} - \text{Colorant cost} / \text{Colorant price} * 100\%$

Colorant price rounding = The rounding of the colorant price

Final price rounding= The rounding of the final price

List price rounding = The rounding of the list price

Price group limit for group = The price limit for the price group 1.

Price group limit for group = The price limit for the price group 2.

Price group limit for group = The price limit for the price group 3.

Tax (%) = Tax rate in percentage of tax-free price.

Tinting service price = additional flat fee, independent of the color

In the **Common data > Colorants** level (when a colorant has been selected) the user can define the following Custom Values into the Custom value column for each colorant separately:

Description	Value	Custom value
Colorant cost	17,84	
Colorant margin (%)	5,00	

Colorant cost = (internal) Cost of colorant

Colorant margin (%) = $\text{Colorant price} - \text{Colorant cost} / \text{Colorant price} * 100\%$

In the **Common data > Can sizes** level (when a can size has been selected) the user can define the following Custom Values into the Custom value column for each can size separately:

Description	Value	Custom value
Colorant price for group	0	
Colorant price for group	0	
Colorant price for group	0	
Tinting service price	0,1	

Colorant price for group 1 = Colorant price for price group 1

Colorant price for group 2 = Colorant price for price group 2

Colorant price for group 3 = Colorant price for price group 3

Tinting service price = Additional flat fee, independent of the color

In the **Common data > Products** (when a **product** has been selected) the user can define the following Custom Values into the Custom value column for each product separately:

Description	Value	Custom value
Base margin (%)	2,00	
Price group limit for group	2	
Price group limit for group	5	
Price group limit for group	15	
Tax (%)	22,50	
Tinting service price	0,1	

Base margin (%) = $\text{Base price} - \text{Base cost} / \text{Base price} * 100\%$.

Price group limit for group = The price limit for the price group 1.

Price group limit for group = The price limit for the price group 2.

Price group limit for group = The price limit for the price group 3

Tax (%) = Tax rate in percentage of tax-free price.

Tinting service price = additional flat fee, independent of the color

In the **Common data > Products** level (when a **base paint** has been selected) the user can define the following Custom Values into the Custom value column for each base paint separately:

Description	Value	Custom value
Base cost (per litre)	25	
Base margin (%)	2,00	
Price group limit for group	2	
Price group limit for group	5	
Price group limit for group	15	

Base cost (per liter) = Volumetric Base cost (eur/liter)

Base margin (%) = $\text{Base price} - \text{Base cost} / \text{Base price} * 100\%$.

Price group limit for group = The price limit for the price group 1.

Price group limit for group = The price limit for the price group 2.

Price group limit for group = The price limit for the price group 3.

In the **Common data > Products** level (when a **can size** of a base paint has been selected)

the user can define the following Custom Values into the Custom value column for each can size separately:

	Description	Value	Custom value
Common data			
Colorants			
Can sizes			
Products			
Exterior 2401 AABC			
AA			
0,25 l	Total list price for group	0	
1 l	Total list price for group	0	
4 l	Total list price for group	0	
10 l	Total list price for group	0	
B			
C			
AA			
B			
C			
Exterior 2401 AAC			
Interior 2401 AABC			
Interior 2401 AAC			

Base cost (per can size) = Cost of can of base (eur/can size xx l)

Base price = Price of base (eur/liter).

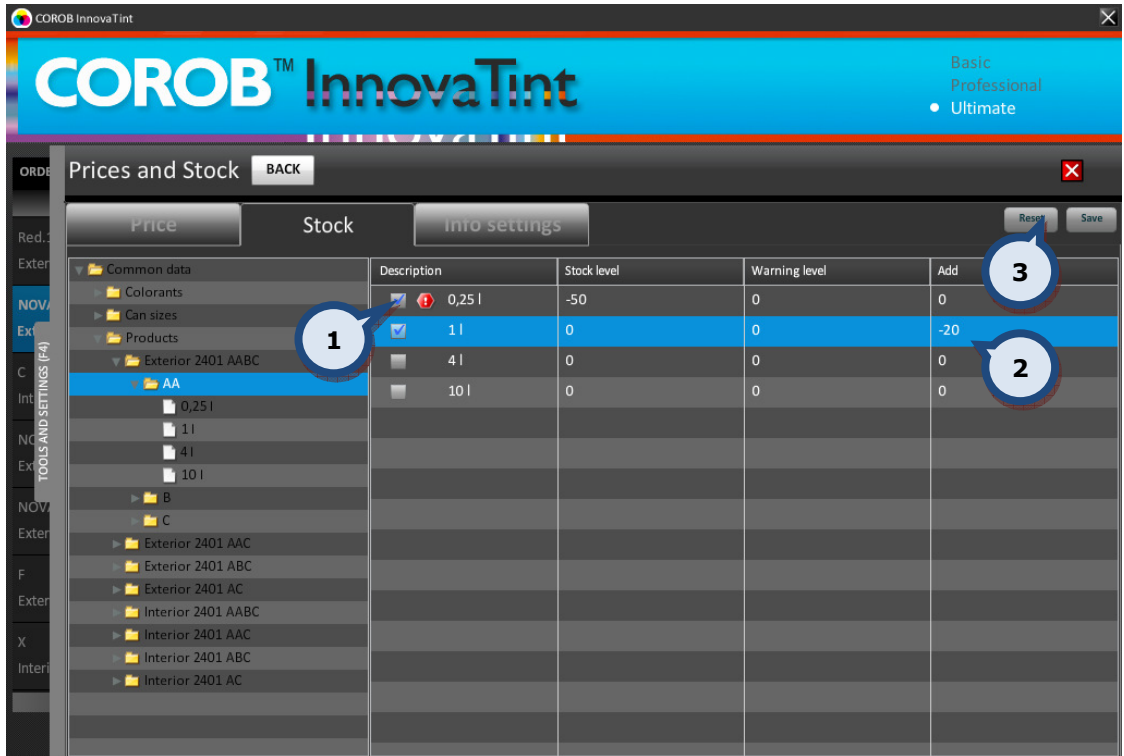
Total list price for group = The total list price for the price group 1.

Total list price for group = The total list price for the price group 2.

Total list price for group = The total list price for the price group 3.

7.14 Update stock levels for the base paints

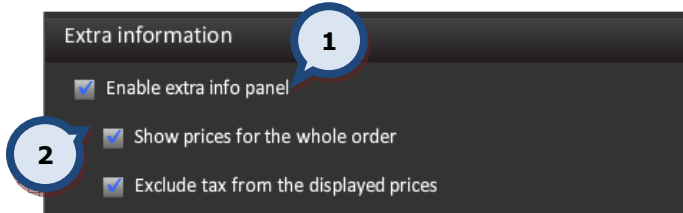
In the **Stock** section of the **Tools and settings** > **Prices and stock** page, you can view and update the stock levels of the base paints.



1. Enable the check box in the **Description** column to activate the can size to modify.
2. Enter the number of cans into the **Add** column to update the stock level and click on the **Save (3)** button to update the stock level. Note: You can use negative numbers to decrease stock levels.

7.15 Show prices for the whole order in the extra info panel

In the **Extra information** section of the **Info settings** tab page of the **Tools and settings** > **Prices and stock** page, you can set the price for the whole order to be displayed in the extra info panel within the orders page.



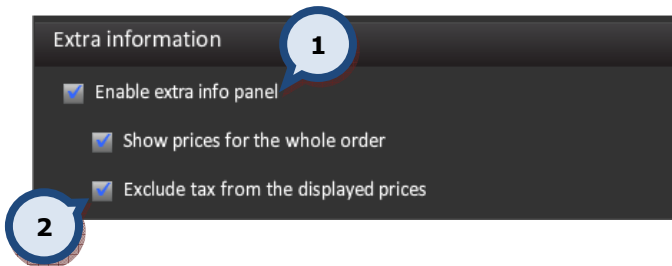
1.Enable the check box **Enable extra info panel** to set the extra info panel visible within the orders window.

When the Extra info panel is enabled:

2. Enable the check box **Show prices for the whole order** to set this up.

7.16 Exclude tax from the prices displayed on the extra info panel

In the **Extra information** section of the **Info settings** tab page of the **Tools and settings** > **Prices and stock** page, you can set whether tax is displayed or not in the extra info panel on the orders page.



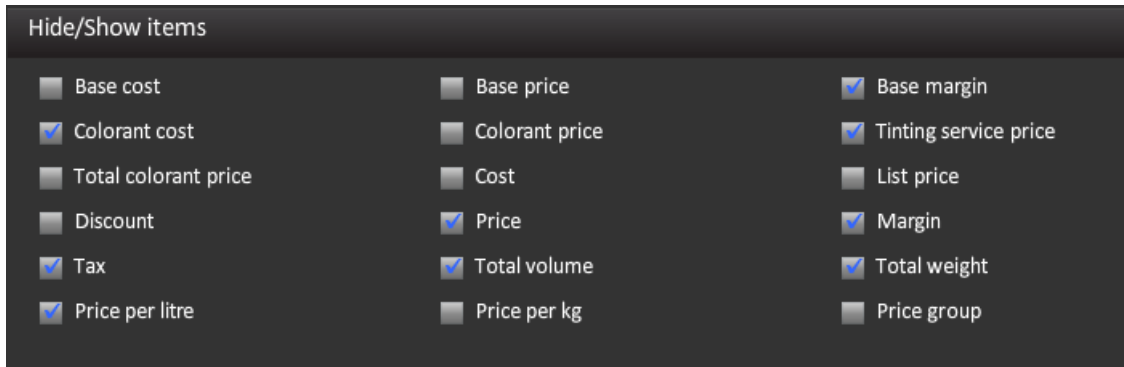
1.Enable the check box **Enable extra info panel** to set the extra info panel visible within the orders window.

When the Extra info panel check box is enabled:

2.Enable the check box **Exclude tax from the displayed prices** to set this up.

7.17 Visible items in the extra info panel

In the **Hide/Show items** section of the **Info settings** tab page of the **Tools and settings** > **Prices and stock** page, you can set items to be displayed in the extra info panel on the orders page.



To set any of the below items to be displayed in the Extra info panel on the orders page, enable the corresponding check boxes.

Base cost = BCOST if available, or BCOSTL * Base volume

Base price = BPRICE if available, or Base cost / (1-BMARGIN)

Base margin = Base price – Base cost

Colorant cost = \sum CCOST * Colorant volume

Colorant price = \sum CCOST * Colorant volume / (1- CMARGIN)

Tinting service price = Tinting fee

Total colorant price = Total price of all colorants in formula

Cost = Base cost + colorant cost

List price = Base price + Price of tinting

Discount = -Discount rate * List price

Price = List price + Discount (Note: discount \leq 0)

Margin = Price - cost

Tax = Tax-inclusive prices are generally the above multiplied by (1 + TAX). If rounding is enabled, it is applied to the tax-inclusive price, and the price before tax, and margin, are calculated backwards from them.

Total volume = Total volume of tinted paint

Total weight = Total mass of tinted paint

Price per liter = Price / Total volume of tinted paint

Price per kg = Price / Total mass of tinted paint

Price group = Price group is determined after calculating the Colorant cost. Each price group is numbered and associated with a PGLIMIT \geq (Colorant cost / nominal quantity in litres or kilograms). If none of the groups meet this criterion, the highest numbered price group is assigned. The price group number is used to look up PGPRICE and PGCPPRICE. These have the following effect on the price calculations:

If PGPRICE has been set:

List price = PGPRICE

Price of tinting = List price – Base price

Colorant price = Price of tinting – tinting fee

Otherwise, if PGCPRISE has been set:

Colorant price = PGCPRISE

Otherwise:

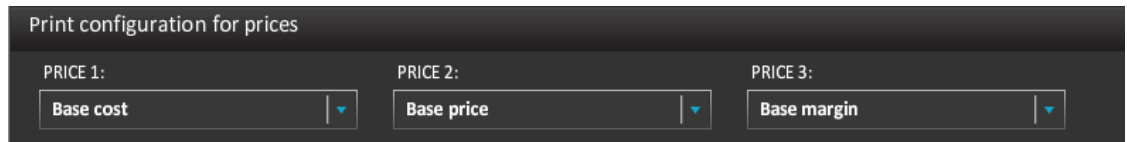
Colorant price = PGLIMIT * Nominal quantity in liters or kilograms / (1-CMARGIN)

All other prices are calculated using same formulas as in the section Price groups disabled.

Tax and margins are inserted as numbers between 0 and 1. Tax is relative to tax-free price and margin is relative to selling price.

7.18 Price information on the labels

In the **Print configuration for prices** section of the **Info settings** tab page of the **Tools and settings** > **Prices and stock** page, you can set items to be printed on to labels.

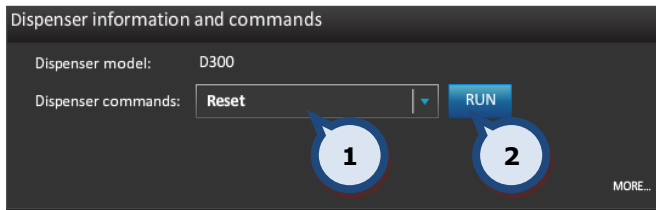


You can set three price items (PRICE 1, PRICE 2, and PRICE 3) to be printed onto the labels. The options are:

- Base cost
- Base price
- Base margin
- Colorant cost
- Colorant price
- Tinting service price
- Total colorant price
- Cost
- List price
- Discount
- Price
- Margin
- Tax
- Total volume
- Total weight
- Price per litre
- Price per kg
- Price group.

7.19 Reset and initialize the dispenser

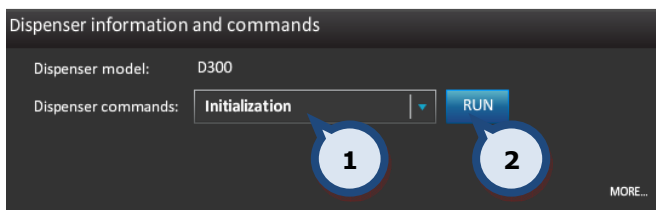
In the **Dispenser information and commands** section of the **Tools and settings**, you can run commands for a tinting machine. This section is active only, if the Corob tinting machine is in use or a UDCP connection to the tinting machine has been established (limited features available).



To **reset** the tinting machine:

1. Select **Reset** from the dispenser command drop down list
2. Click on the **RUN** button to execute the command.

The reset command will empty the circuits in the tinting machine and run the initialization for it.



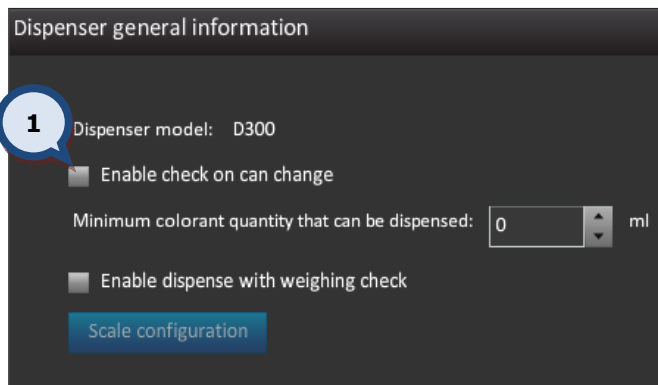
To **initialize** the tinting machine:

1. Select **Initialization** from the dispenser command drop down list
2. Click on the **RUN** button to execute the command.

The initialization command will check the circuits in the tinting machine.

7.20 Enable can change check

In the **Dispenser general information** section of the **Tools and settings > Dispenser information and commands** page, you can set the can change check. This section is active only, if the Corob tinting machine is in use or a UDCP connection to the tinting machine has been established (limited features available).

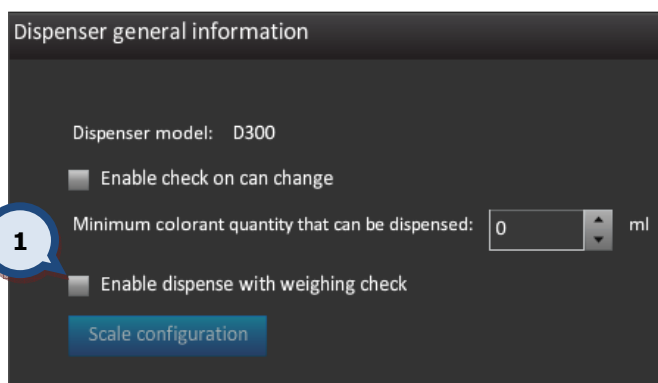


1. Enable the **Enable check on can change** check box to activate the can change check.

If the tinting machine is equipped with a sensor for can movement, enabling this option will check if the can has been removed after tinting. If the can has not been removed from the tinting machine, the following warning message is displayed: "warning – the last dispensed can has not been removed"

7.21 Enable dispense with weight check

On the **Dispenser general information** section of the **Tools and settings > Dispenser information and commands** page, you can set the weight check for the dispensing process. This section is active only, if the Corob tinting machine is in use or a UDCP connection to the tinting machine has been established (limited features available).



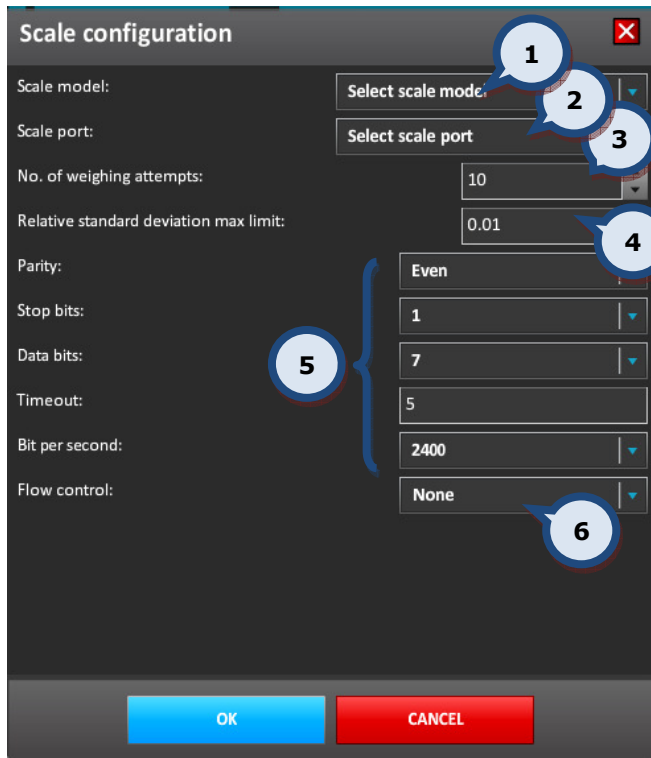
1. Enable the **Enable dispense with weight check** check box to activate the weight check on the dispensing process.

When the check box is enabled, the tinting equipment will dispense the colorants one by one, and after each colorant has been dispensed the dispensed amount is checked with the scale. Also the scale configuration button is activated.

7.22 Scale configuration

In the **Dispenser general information** section of the **Tools and settings > Dispenser information and commands**, you can run a command for a tinting machine. This section is active only, if the Corob tinting machine is in use or a UDCP connection to the tinting machine has been established (limited features available).

When the **Scale configuration** button is clicked in the **Dispenser information and commands** section, the following window appears:



1.Scale model: The drop down list to select a scale model.

2.Scale port: The drop down list to select the port on which the scale is attached.

3.No.of weighing attempts: The selector field to set the number of attempts made.

4.Relative standard deviation max limit: The selector field to set the maximum allowed error in the weighing.

5.Communication settings: These settings are dependant on the scale type used. Please refer to scale manual for the correct settings.

Parity

Stop bits

Data bits

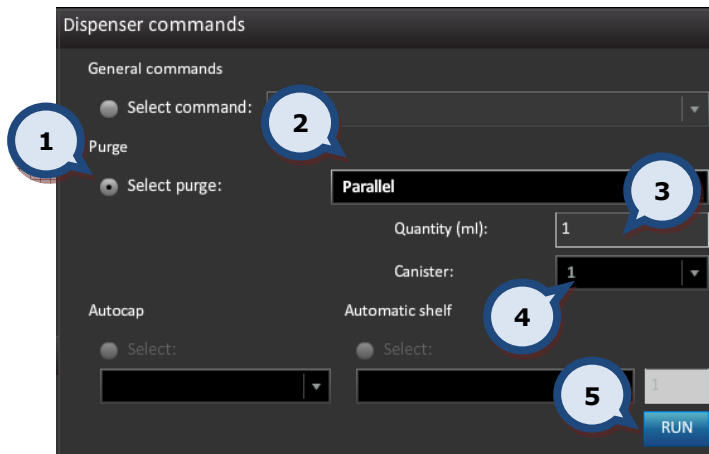
Timeout

Bit per second

6.Flow control: Hardware / Software.

7.23 Purge the tinting machine nozzles

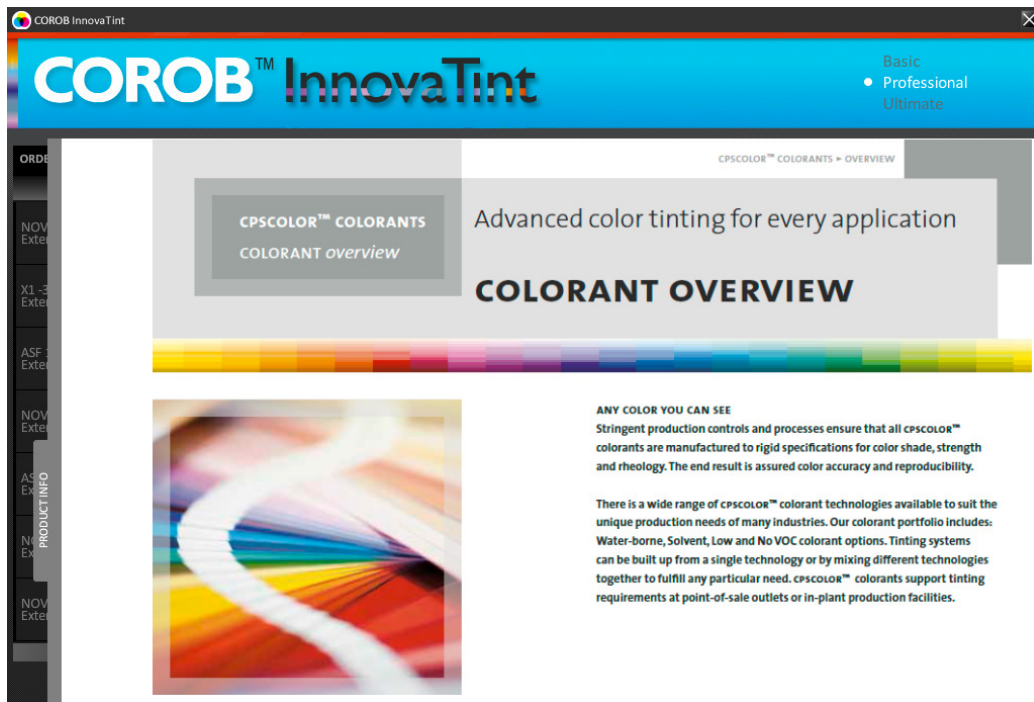
In the **Dispenser commands** section of the **Tools and settings > Dispenser information and commands** you can run a purge for a tinting machine. This process can be used to check the proper function of a single circuit or all of the circuits. For regular daily maintenance made by automatic purge, please refer to **InnovaTint Ultimate manual** or the **manual of the tinting machine** used for further information. This section is active only, if the Corob tinting machine is in use or a UDCP connection to the tinting machine has been established (limited features available).



1. Select the **Select purge** radio button.
2. Select the **purge type** from the drop down list. The options are:
Parallel = Purge all canisters at the same time
Sequential = Purge every canister separately, circuit after circuit
Canister = Purge only a single canister
3. Input the quantity of the colorant used for the purge in to the **Quantity** text field.
4. If a single canister is selected within item (2), select the colorant canister you wish to purge from the **Canister** drop down list.
5. Click on the **RUN** button to begin the purge.

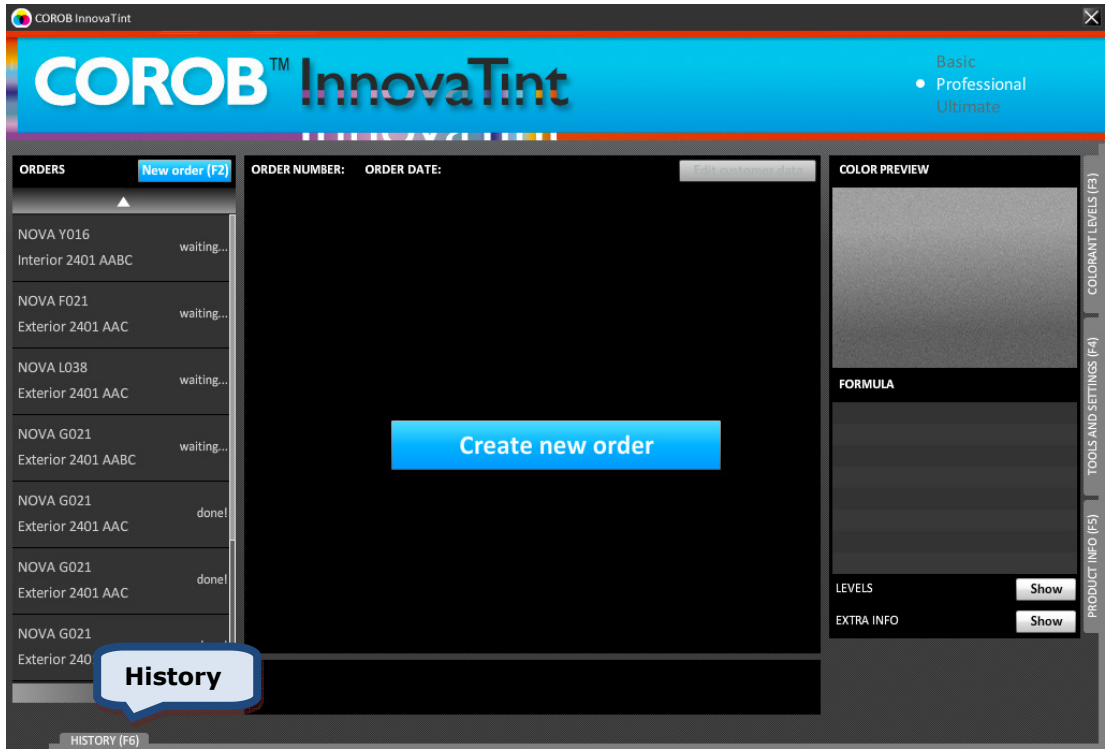
8 Product info

In the **PRODUCT INFO** tab page you can view selected information about that chosen product. All product info that is shown is only editable via the **InnovaTint LAB** software.

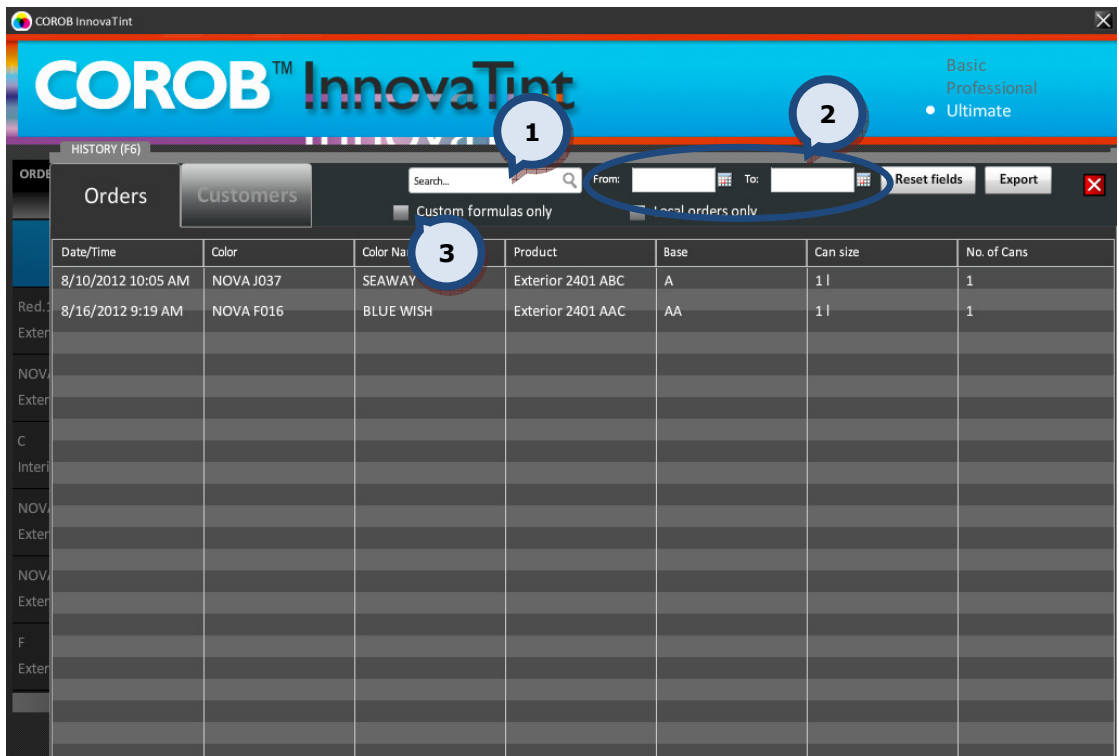


9 Dispensing history

If you wish to view the history of tinted orders or re-dispense already dispensed orders, navigate to the History page by clicking on either the **HISTORY** tab on the bottom part of the page, or by clicking on the **F6** button on your keyboard.



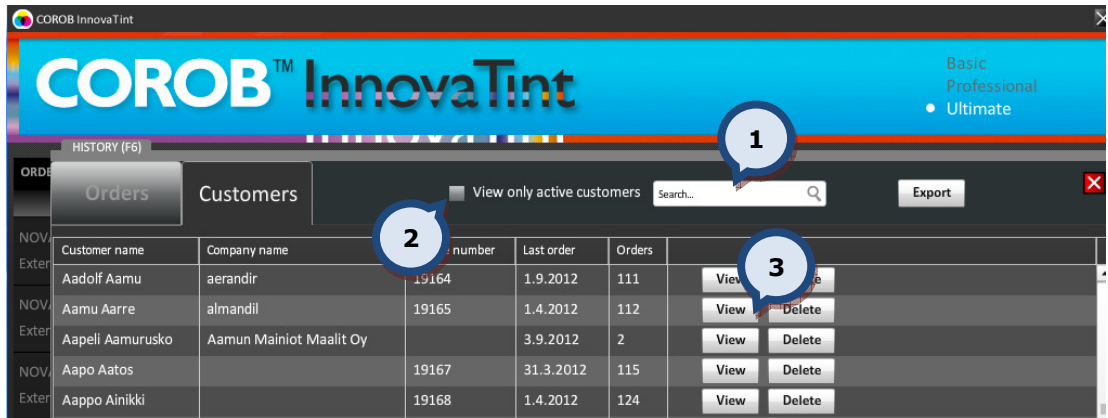
9.1 Dispensing history by orders



You can view the whole list of tinted orders from this view, or you can use the following options to narrow down the search result.

- 1. Search:** The text field to filter your search results. In this field you can search by the color code, color name, product code, product name, or by base code. The results table can be sorted by clicking on the column header.
- 2. From and To:** The date fields to specify a certain period of time to use as filter criteria.
- 3. Custom formulas only:** When the check box is enabled the search is limited to the custom formulas.

9.2 Dispensing history by customers



You can view the whole list of tinted orders from this view, or you can use the following options to narrow down the search result.

1. Search for a customer by name.

2. View only active customers: When the check box is enabled, only the customers with at least one order made are displayed in the list.

To view the details of the dispensed order click on the View **(3)** button.

